

**kk**

**MALVERN COLLECTIVE**

| MELBOURNE |

KOKODA PROPERTY  
*Developer*

LOVELL CHEN  
*Heritage Consultants*

JACKSON CLEMENTS BURROWS ARCHITECTS  
*Architect*

CARR  
*Interior Design Architect*

TECHNÉ ARCHITECTURE + INTERIOR DESIGN  
*Food & Beverage Architect*

**MALVERN COLLECTIVE**

*Cnr Glenferrie & Dandenong Road & Station Place  
Malvern Victoria 3144 Australia*

[malverncollectivebykokoda.com.au](http://malverncollectivebykokoda.com.au)

 MALVERNCOLLECTIVE

## Welcome

—  
FROM KOKODA PROPERTY

Welcome to our limited edition magazine celebrating the arrival of Malvern's new icon, Malvern Collective. This exclusive publication embodies the spirit of Malvern Collective – uniting history, architecture, design, epicure and style.

Over our twenty plus year history, we have quietly built a reputation as one of Australia's most respected developers. Each Kokoda Property project is renowned for its award-winning design, superior quality and unique location within the most coveted neighbourhoods of our cities.

Now this legacy continues at Malvern Collective – a new address defined by collaboration and community.

We began by assembling a team of Australia's industry greats in architecture and design – Jackson Clements Burrows, Carr, Techné and Lovell Chen – who all share the same pioneering spirit and passion for creating addresses of distinction.

Malvern Collective is about bringing people together. It's more than a place to live – it's a community designed to thrive, where diversity and creativity is celebrated.

From contemporary residences to epicurean destinations, and co-working studios to a wellness retreat, Malvern Collective will inject new life into the neglected end of Glenferrie Road, reimagining the area into the landmark precinct it has long deserved. Honouring and restoring the rich character of the iconic Angel Tavern and heritage buildings on Dandenong Road and Station Place, we will ensure they remain a proud part of Malvern's streetscape long into the future.

For the residents who will call Malvern Collective home, all of these exciting dining and lifestyle options will be right at your door, alongside a superb range of exclusive hotel-inspired amenities including a private spa, cinema and rooftop pool. These spaces are all designed with the same discerning eye and attention to detail as the luxury residences themselves.

Put simply, Malvern Collective is where Malvern unites. A new benchmark for urban design. A new icon for Malvern. And an exceptional place to call home.

**Join the #malverncollective**



MARK STEVENS *Managing Director*

## Table of Contents

### 6 Pioneering Spirit

A PLACE OF HISTORY AND COMMUNITY PRIDE FELT ON EVERY STREET CORNER.

### 24 Q&A with Millstone

A TASTE OF PARIS IN THE HEART OF MALVERN JUST MOMENTS FROM HOME.



### 46 Q&A with JCB

INSIGHT AND INSPIRATION BEHIND THE VISIONARY ARCHITECTURE OF MALVERN COLLECTIVE.

### 54 Light & Shade

CRAFTED AND CONSIDERED DESIGN FOR A NEW APPROACH TO CONTEMPORARY LIVING.

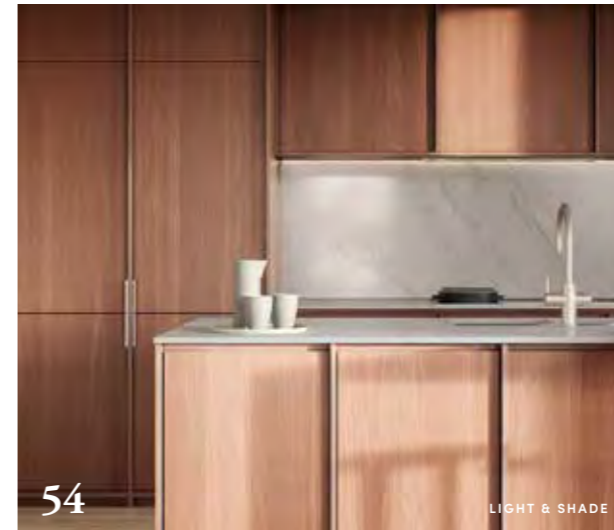


### 38 Little Indulgences

LOCAL AND INTERNATIONAL LABELS UNITE IN MALVERN'S FASHION AND DESIGN SCENE.

### 42 The New Icon

SHAPED BY COLLABORATION AND COMMUNITY, A LANDMARK ADDRESS TO REDEFINE MALVERN.



### 66 Q&A with Carr Design

THE MASTERS OF MODERN INTERIORS ON CREATING SPACES OF DETAIL, DESIGN AND DELIGHT.

### 86 Relaxed Flavour

THE ANGEL TAVERN IS REIMAGINED FOR A NEW GENERATION BY THE AWARD-WINNING ARCHITECTS TECHNÉ.



## Pioneering Spirit

HISTORY

First settled in 1835 by banker and pastoralist John Gardiner and others, Malvern has long been synonymous with tenacity, originality and diversity. Named by barrister and land developer Charles Skinner after his ancestral home, the Malvern Hills in England, the new neighbourhood of Malvern flourished and grew. Today, the rich heritage can be read in the historic shopfronts along Glenferrie Road and High Street, and the period homes surrounding them. Always a friendly and forward-thinking community, Malvern Collective honours and continues this tradition with pride.

## Q&A

AN INTERVIEW WITH JOHN STATHAM  
SENIOR ASSOCIATE, LOVELL CHEN

**L**ovell Chen is a multi-disciplinary practice with more than 30 years of experience in architecture and heritage. The firm is renowned for its expert and meticulous work on built environment projects of all types and sizes, from large scale former industrial complexes to individual houses and structures. Lovell Chen is the heritage consultant at Malvern Collective.

**For readers who don't know, what is a heritage consultant?**  
Heritage consultants research the history and physical fabric of heritage buildings and places. We then provide guidance to ensure that any new or adaptive works carried out are compatible with, and protect, the historical significance.

**Besides heritage consultants, who else works with you at Lovell Chen?**

We do an unusually wide range of work, so we need a broad base of expertise. Our practice includes architects, planners, conservation specialists, historians, researchers and materials experts. Being across all of these fields enables us to work on a wide range of adaptation projects and new buildings, as well as conservation works and heritage reports.

**What are some of the best known Melbourne projects Lovell Chen has been a part of?**

We undertake projects of widely differing scales, from modest residential buildings to Melbourne's best known landmarks including Palais Theatre, Sidney Myer Music Bowl, Melbourne GPO and the Royal Exhibition Building. Right now, we're particularly proud of our work at Flinders Street Station where the exterior conservation and repainting works are now visible.

**What did your work reveal about the history at Malvern Collective?**

So much has changed over the years in this location. From a heritage point of view, only the former Railway Hotel, now known as the Angel Tavern, and two Victorian-era shops on Station Place survive from the earliest period of development.

**What can you tell us about the Angel Tavern?**

It's a building with a long history. A hotel known as the Gardiner Hotel

was first built here some time before 1856. It was altered in the 1880s, and then again around 1925 it was extensively remodelled to create the interwar Free Classical style façade which remains today.

**Being in such a prominent position, it was probably a popular pub even back then?**

Back in the 1860s, the licensee of the Gardiner Hotel was a well-known Melbourne cricketer, William Greaves. As an added attraction for the hotel, he built what is believed to be the first bowling green in Victoria.

**Station Place also has some historical significance.**

It certainly does. The Victorian-era shops at the gateway to Station Place (once the home of grocer and merchants Lindsay Bros), are the last remnants of an early streetscape along here. In the late nineteenth century, Dandenong Road consisted mainly of residential buildings, with Station Place providing access for people between the street and Malvern Station. We're really pleased to see this being reactivated as part of Malvern Collective.

**Did these shops have a particular architectural style?**

Yes; the style would be described as 'polychrome Italianate'. Polychrome refers to the multi-coloured bricks used to create the decorative patterns around the windows and doors. Italianate refers to the revival of an Italian Renaissance style which was popular in the late nineteenth century.

**How will Malvern Collective approach the conservation of this element?**

The two shops on Station Place have been painted over in the past, but our initial investigation suggests that the original polychrome brickwork may survive beneath the paint. If that's the case, the proposed restoration works will aim to reveal some of that beautiful polychrome detailing.

**What are you most proud of about this project?**

It's always terrific when we uncover lost architectural character from Melbourne's past and the project team unites to honour that history. Malvern Collective pays homage to Malvern's first pioneers and the rich legacy they left behind.

[lovellchen.com.au](http://lovellchen.com.au)



LINDSAY BROS. 1 STATION PLACE, CNR DANDENONG RD  
STATE LIBRARY OF VICTORIA

KK



SINCE 1886, THE MALVERN TOWN HALL HAS BEEN A COMMANDING LOCAL LANDMARK, WATCHING OVER THE EVER-EVOLVING COMMUNITY SURROUNDING IT.

MALVERN TOWN HALL c1905-1910  
STATE LIBRARY OF VICTORIA

TOWN HALL, MALVERN.

MALVERN COLLECTIVE BY KOKODA PROPERTY



# The Original Malvern Collective

HISTORY



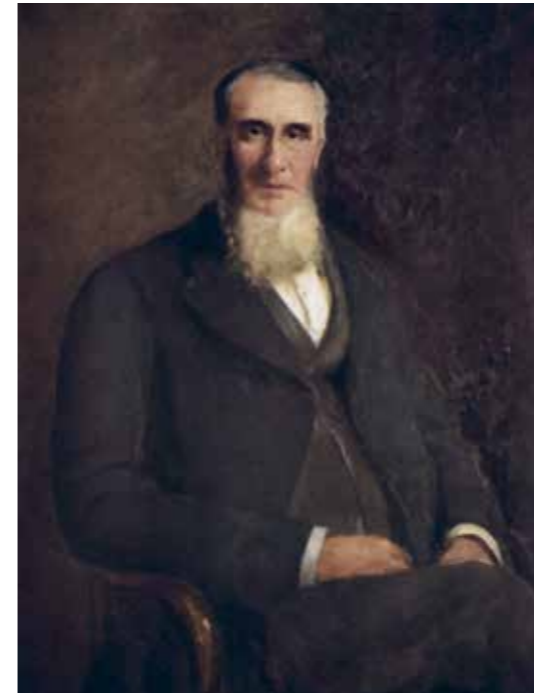
MRS. JOHN GARDINER

John Gardiner's wife.



JOHN GARDINER

An English banker and pastoralist, John Gardiner was one of the first settlers of Malvern.



ROBERT CLOVER BENSON

Councillor of Malvern 1862-1892 and President of the Shire across two decades.



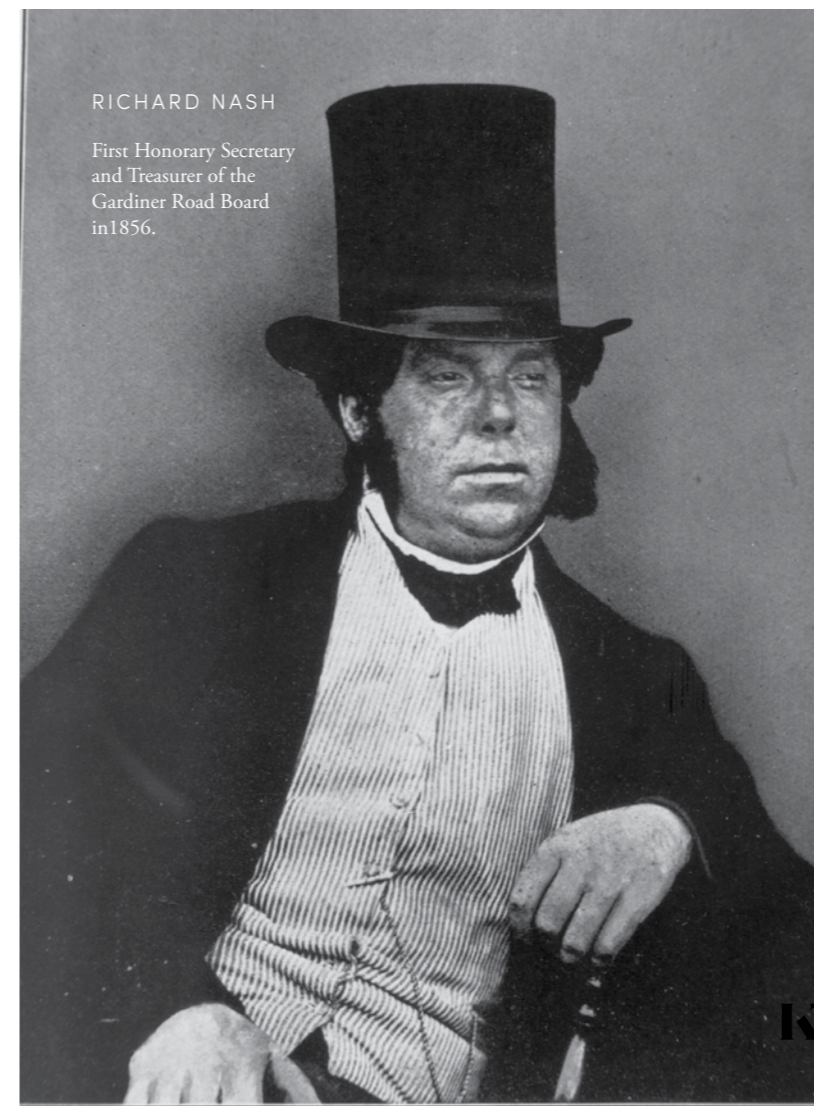
MALVERN & CAULFIELD COUNCILLORS

A municipal cricket match between Malvern and Caulfield councillors and officers in 1894.



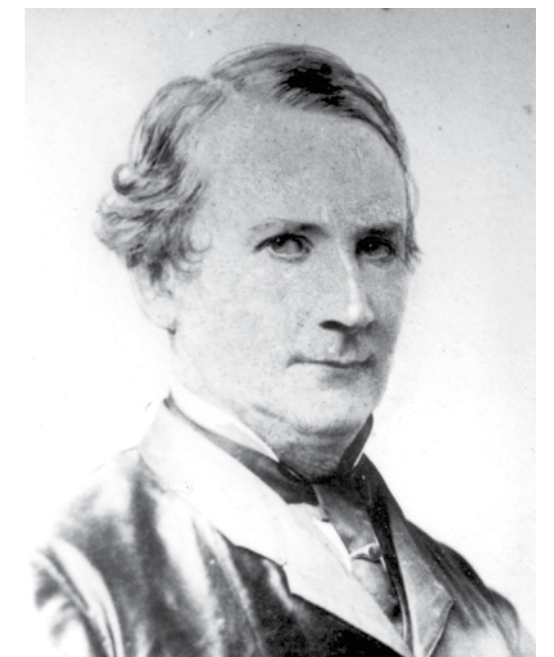
KONG MENG

A picnic given to the local children in 1881 by Kong Meng, the public spirited Chinese merchant who lived in Elizabeth Street, Malvern. Kong Meng and his family are pictured in the left foreground.



RICHARD NASH

First Honorary Secretary and Treasurer of the Gardiner Road Board in 1856.



CHARLES B. G. SKINNER

An English barrister, Charles was indirectly responsible for the name 'Malvern' when he named his land estate and Malvern Hill Hotel after the Malvern Hills in the UK where his forebears lived.

FROM PAST TO PRESENT,  
THE SITE OF MALVERN  
COLLECTIVE IS SYNONYMOUS  
WITH AUSTRALIA'S  
PIONEERING SPIRIT.

LINDSAY BROS. 1 STATION PLACE, CNR  
DANDENONG RD, c1900  
STONNINGTON HISTORY CENTRE







GLENFERRIE ROAD, MALVERN c1920-1954  
STATE LIBRARY OF VICTORIA



SOLDIERS MARCHING DOWN GLENFERRIE RD  
c1940-1945  
STATE LIBRARY OF VICTORIA



VIEW OF DANDENONG RD & STATION PLACE  
STATE LIBRARY OF VICTORIA

OVER YEARS OF CHANGE,  
FROM GENERATION TO  
GENERATION, THE STRENGTH  
OF THE COMMUNITY HAS BEEN  
AT THE HEART OF MALVERN.



CNR GLENFERRIE & WATTLE TREE RD  
DANDENONG RD LINE OPENING 16 DECEMBER 1911  
STATE LIBRARY OF VICTORIA

# Pride of Place

NEIGHBOURHOOD

Radiating out from under the iconic clock tower of the Malvern Town Hall are the picturesque tree-lined streets, boutique shops, manicured parks and historic residences that make up Malvern. As one of Melbourne's most coveted places to live, this prestigious locale boasts an unrivalled lifestyle with access to the city's most prestigious schools, epicurean hotspots and the energy of Glenferrie Road and High Street. Here you can indulge in high end fashion and decadent patisseries alongside organic produce and hidden cafés. It's this eclectic character that residents love; refined, relaxed and welcoming to all.

PORT PHILLIP  
BAY

DANDENONG  
ROAD

# MALVERN COLLECTIVE

MALVERN  
CENTRAL

GLENFERRIE  
ROAD

HIGH  
STREET

MALVERN  
TOWN HALL

| MELBOURNE |

MELBOURNE CBD

ST KILDA EAST

ARMADALE

CAULFIELD  
NORTH



MALVERN





PIZZA RELIGION



MILLSTONE



ESPRESSO STATION



TONIC & GRACE

## Local Heroes

NEIGHBOURHOOD



SAGRA



THE POUR KIDS



MASTER OF NONE

From dawn to dusk, Malvern satiates the most discerning of palates, beginning with a hearty breakfast at Master of None or The Pour Kids. When your caffeine levels drop, Espresso Station is on hand for a quick refill, and Millstone is your go-to for almost too-pretty-to-eat sweet treats. Feel good with healthy, insta-fave eats from Tonic & Grace, indulge in a long lunch at modern Italian favourite Sagra or join the worship at Pizza Religion. At every hour, for every taste, Malvern delivers.



## Q&A

AN INTERVIEW WITH ALICE WRIGHT  
CHEF & OWNER, MILLSTONE

**M**illstone is a Malvern institution – a café and patisserie serving delectable treats from chef and owner, Alice Wright. As well as being a local favourite place to pick up a café au lait and pain au chocolat, Millstone runs cooking classes where the epi-curious can learn the art of making sweet treats, authentic pasta and even how to host a gourmet dinner party.

**Before establishing Millstone, you trained at the world-renowned Cordon Bleu in Paris. What was the most memorable part of your experience?**

You seriously can't get much better than learning how to make pastries in France! For me, probably the most incredible part of my time in Paris was finding out all the small tricks and tips from French chefs who have been in the industry for decades. And of course the opportunity to enjoy wonderful pastries every day was also a highlight!

**Is there a part of your training which still resonates with you today at Millstone?**

Absolutely. For me, the tradition of making everything from scratch – whether it was pralines, pastes or glazes – is something that I have carried through to Millstone. I love knowing exactly what goes into all of our creations, and knowing that each one is made with local produce. We're so lucky living in Melbourne to have access to world-class ingredients, and I love being able to celebrate that in everything we make.

**What inspired you to launch your own business here?**

I really felt like we were missing that tradition of quality pastries and

cakes in the area. Patisseries line every corner of Paris, and small towns too, because for the French, it's an everyday occurrence to buy a baguette or a small sweet treat. I wanted to bring a little bit of that culture to Melbourne, and Malvern seemed like the natural choice where people appreciate a touch of European tradition.

**What makes this such a great place to live and work?**

I actually grew up around the corner so I know it well. I've always adored this part of Melbourne with the beautiful parks and shops. It has everything you need within walking distance, and it's also not far from the city. Judging by the customers we have at Millstone, whether you're a young professional, family or retiree, Malvern has something for everyone.

**Millstone and Malvern Collective will soon be neighbours – what are you most looking forward to when it is finished?**

I think it's really going to bring an exciting new energy and increased focus to this end of Glenferrie Road which is fantastic. Personally, I'm looking forward to welcoming Malvern Collective's new residents to Millstone. Malvern is very social and there is a real sense of family here. I'm sure everyone will feel right at home!

**You would know better than anyone – does Malvern have a sweet or savoury tooth?**

Hard to say – it's probably both, although everyone is partial to a croissant!

[millstonepatisserie.com.au](http://millstonepatisserie.com.au)



THE VIBRANT HEART OF  
MALVERN, GLENFERRIE ROAD  
CELEBRATES REFINED STYLE  
AND ECLECTIC FLAVOUR.









12-13  
CLAREMONT AVE



FROM RENOWNED PRIVATE SCHOOLS TO CHARMING HERITAGE SHOPFRONTS, MALVERN'S VILLAGE ATMOSPHERE IS STEEPED IN CENTURIES OF TRADITION.

EXHALE. ONLY 8KM FROM  
THE CITY, YET SEEMINGLY A  
WORLD AWAY, MALVERN EXUDES  
A CALM BEAUTY AND A QUIET  
SENSE OF SANCTUARY.



## Natural Selection

NEIGHBOURHOOD



MALVERN PUBLIC GARDENS

Whether it's taking the dog for a brisk morning walk or lazing away the afternoon in the sunshine, you're surrounded by an abundance of natural beauty at Malvern Collective. Nearby Malvern Public Gardens and Caulfield Park feature beautiful, majestic trees, rolling lawns and tranquil water features, attracting an array of colourful wildlife. Enjoy an early run, leisurely picnic with friends or summer time opera under the stars. These lush spaces will become your favourite place to unwind and recharge.



## Little Indulgences

NEIGHBOURHOOD



From unique finds in Glenferrie Road to local and international fashion icons on High Street, living at Malvern Collective puts you at the heart of the fashion and design scene. Stop by Assembly Label for relaxed wardrobe staples, slip into a sculpted silhouette from Dion Lee or invest in a statement piece from Acne Studios. Discover green accents to-go from Ivy Muse, beautiful jewellery at Mondo Cherry, and on-trend homewares from Crate Expectations. Backed by Malvern Central and David Jones, you're never short of boutiques to shop in style.

AS THE SUN SETS,  
SAY BON SOIR AT  
ONE OF MALVERN'S  
INTIMATE WINE BARS.



## The New Icon

ARCHITECTURE

The diversity and distinction at the heart of Malvern Collective is seen in its inspiring architecture. Rising above the signature heritage buildings and gateway Melbourne site, the bold and brilliant design heralds a new age for this neighbourhood, honouring its past and celebrating its future to create a new icon as striking and sophisticated as Malvern itself. From every angle, the award-winning studio of Jackson Clements Burrows has envisioned a place of close knit community and commanding style.





| THE M EDITION |

| THE C EDITION |

ARTIST IMPRESSION



## Q&A

AN INTERVIEW WITH GRAHAM BURROWS  
DIRECTOR, JACKSON CLEMENTS BURROWS



**J**ackson Clements Burrows is one of Australia's most distinguished architectural studios. Established in 1998 by Tim Jackson, John Clements and Graham Burrows, JCB is renowned for the innovative design and site-sensitive approach of its remarkable projects. Malvern Collective is testament to co-director Graham Burrows' passion for projects that engage with the local community.

**Malvern Collective features a striking architectural form. What was your inspiration?**

From the beginning, we were inspired by its unique position. The wedge shape of the site creates multiple perspectives, including the serenity of the Dandenong Ranges in the distance as well as the active neighbourhood of Malvern in the foreground. We took our inspiration from the mountain ranges in the upper forms, while the lower forms engage with the rich fabric of the Glenferrie Road precinct.

**And this approach led to the multiple building forms?**

Yes, each building responds to three unique perspectives: Glenferrie Road, Dandenong Road and Malvern train station, along with reactivating Station Place's bluestone laneway through to Malvern Collective's new retail precinct. The architecture is about moving away from the traditional, monolithic tower to create a collection of spaces that embrace and celebrate their individual contexts.

**This is an iconic site at the intersection of two key Melbourne roads. How did this inform the design?**

On the ground level, the design is informed by a sense of connectivity and community. This includes direct access to the train station and surrounding neighbourhood. On a larger scale, we recognised that this is a gateway position for Melbourne's southeast, and that called for an iconic quality to the design. The mountain forms, the prismatic design and natural landscaping all add to this sense of contemporary grandeur.

**The site is also notable for its rich heritage. How did you celebrate this in the architecture?**

This was a fantastic opportunity, because we wanted to honour and restore the character of the heritage buildings. We have ensured the rhythm of the architecture is in keeping with the Glenferrie Road streetscape, while the upper form is respectfully set back. It was important that the scale of the podium element was consistent with the low-rise heritage buildings. It's about various scales, juxtaposing past and present, working together in unique harmony.

**How did this inform the materiality of Malvern Collective?**

The lower levels of the podium draw upon the heritage context of Glenferrie Road to create a solid base, with polished concrete, while along the train line the architecture echoes the repetition of the railway tracks through a vertical rhythm. Extending above these solid forms are the towers clad in glass. Each tower has a slightly different tint, designed to pick up the colours of the sky with a warmth and lustre depending on the orientation and how the sunlight moves across them during the day.

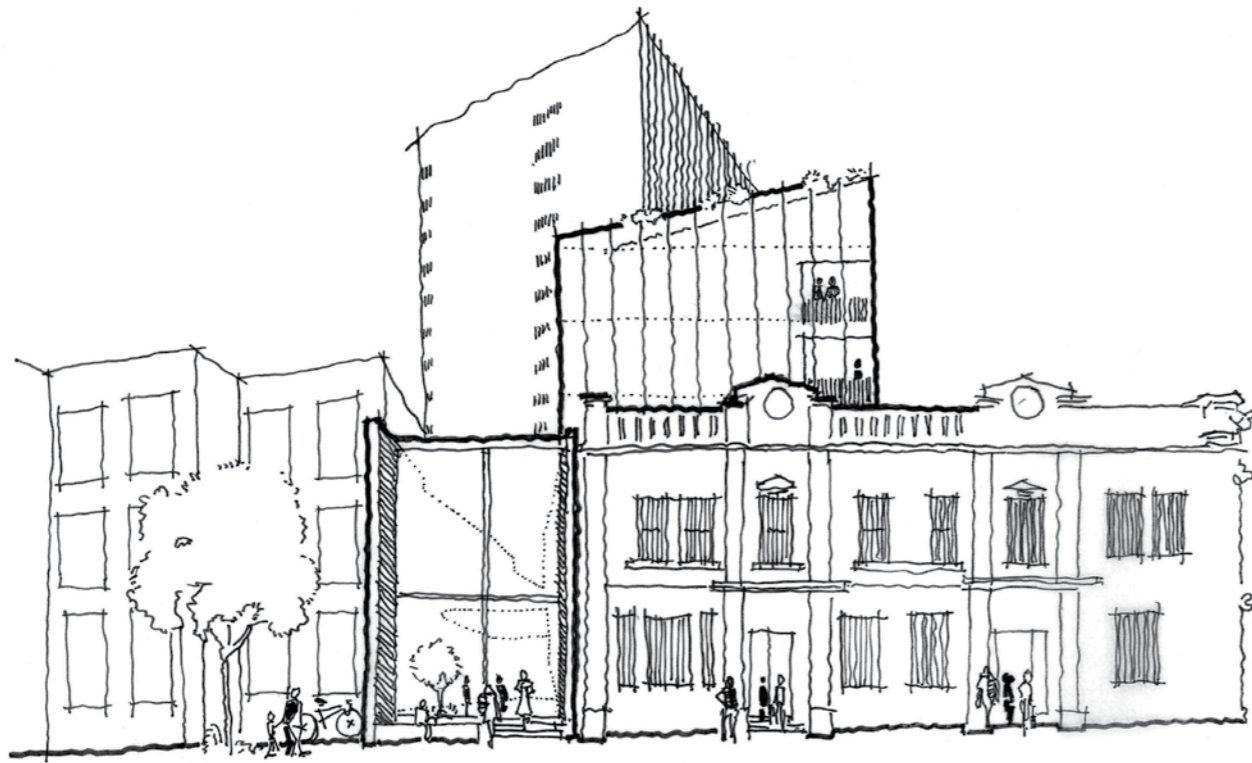
**Your work has won many awards for projects including Upper House and The Cullen Hotel. Do these share a JCB signature which we would find at Malvern Collective?**

Only in that our projects first and foremost respond to their own individual context. With each project, the built form is shaped around the unique heritage, the neighbourhood and ultimately the future residents. We believe that by carefully considering and responding to the specific nature of a site we can create a place that's truly unique. And that is certainly true of Malvern Collective – it will be a landmark for generations to come.

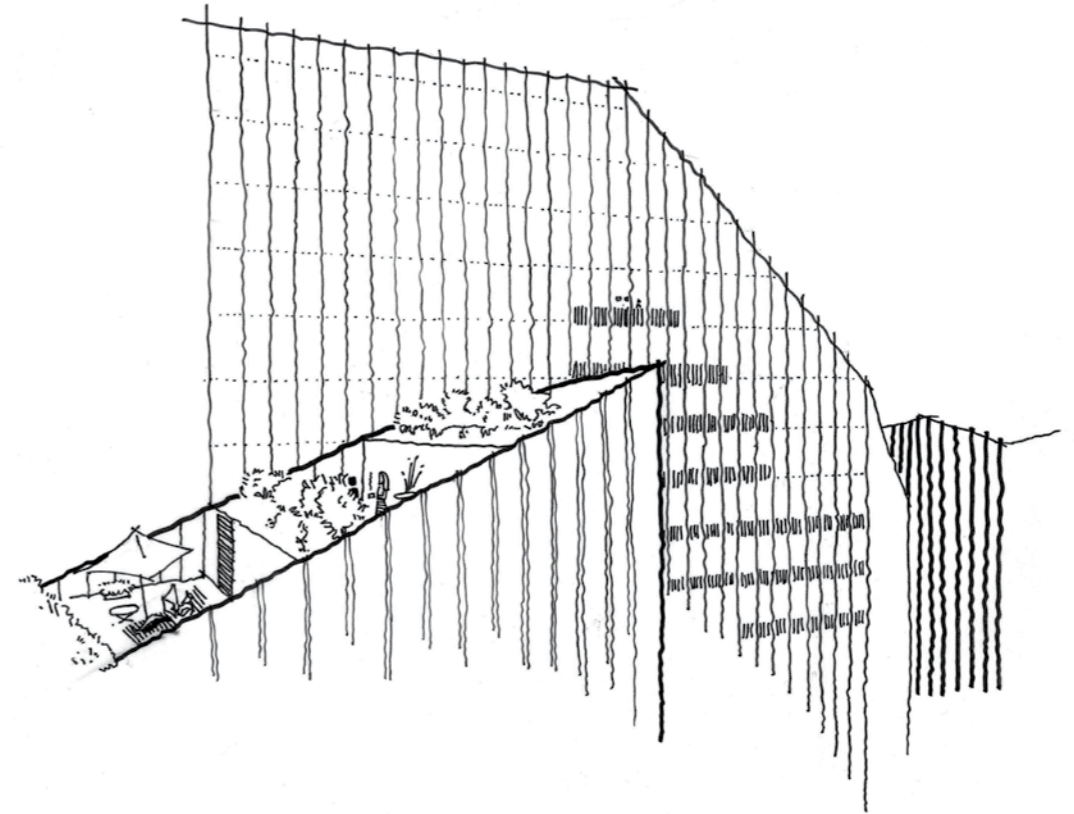
[jcba.com.au](http://jcba.com.au)







SKETCH BY JCB



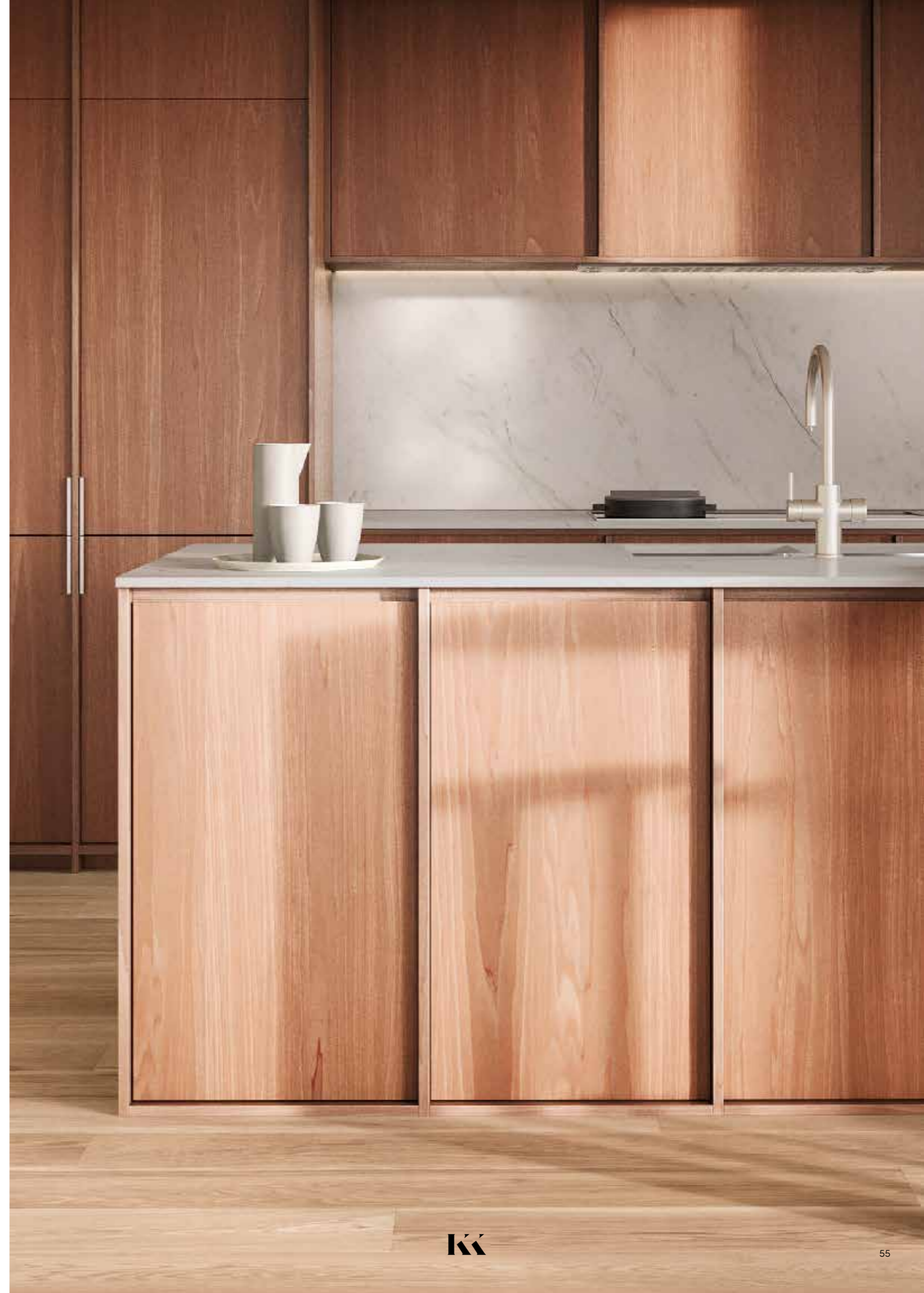
WITH MODERNIST DESIGN  
AND 7 DAY CONCIERGE SERVICE,  
THE LOBBY SETS THE SCENE  
FOR AN EFFORTLESSLY  
SOPHISTICATED ADDRESS.



ARTIST IMPRESSION

## Light & Shade

INTERIOR DESIGN



A HARMONY OF DESIGN AND WARMTH IN THE MATERIALITY CREATES A HOME THAT IS BOTH HIGHLY CONTEMPORARY AND NATURALLY WELCOMING.



BALANCING EFFICIENCY AND ELEGANCE,  
THE SIGNATURE MALVERN COLLECTIVE  
PALETTE CELEBRATES THE RICHNESS  
OF WALNUT FINISHES.



THE LIGHT PALETTE INTRODUCES  
A CRISP, CLEAN AND CONTEMPORARY  
STYLE, DESIGNED AROUND QUALITY,  
CRAFTSMANSHIP AND PRACTICALITY.



INSPIRED BY THE JAPANESE TRADITIONS OF BATHING AND WELLNESS, THE BATHROOM IS A TRANQUIL RETREAT OF IMPECCABLE STYLE.







## Q&A

AN INTERVIEW WITH CHRIS MCCUE  
DIRECTOR OF ARCHITECTURE, CARR

carr

**T**he vision of Carr is to drive change, challenge perceptions and design for the future. Through a string of highly awarded interior design projects in Australia and overseas, the studio has created extraordinary homes and spaces under the eye of its Director of Architecture, Chris McCue.

**Can you share with us the inspiration behind the interior design for Malvern Collective?**

Our starting point for the project was the striking vertical rhythms and 'rib' detail of JCB's exterior architecture. We wanted to create a consistent visual language from the outside in. The synergy between Carr and JCB has always been strong, resulting in Malvern Collective's unique architectural and interior design language.

**You've also worked with Kokoda Property on a number of successful Melbourne projects.**

Yes, after multiple years of working together we like to say that we understand their DNA. They're an aspirational developer and they always look to push the boundaries of design. There's a real focus on the practicality of spaces, craftsmanship and high-quality finishes.

**What makes Malvern Collective's residences unique?**

This development is unlike anything seen before in the precinct. The pairing of the buildings and the relationship they create is an interesting juxtaposition. The unique shape of these architectural forms has informed a collection of one-of-a-kind residences with inspired outlooks and a design aesthetic unique for Malvern, and indeed Melbourne.

**Can you take us through some of the finishes you've selected for the interiors?**

The journey begins in the ground floor lobby, where you're enveloped by the language of the architecture in the interior space. Prismatic obscure glass offsets brushed black granite, creating a play of light and shadow.

**What about the residences themselves?**

We bemoan the same sameness in the apartment market today. Instead, we want to create something unexpected, offering a selection of interesting textural palettes. The signature Malvern Collective walnut palette is

warm and rich in its materiality, while for the purists, the light palette celebrates the understated simplicity of white on white.

**What will the experience feel like in these spaces?**

Each residence can be likened to a retreat; a warm environment that's been carefully crafted to create a textured and layered experience, not only through the material palette, but through an architectural visual language subtly echoed in the interior details. From the overlaying table forms to the recessed drawer pulls, the details create a rich experience.

**What was your approach to the shared amenity spaces?**

As a natural extension to the residences, these spaces elaborate the interior concept on a grander scale, with luxuries akin to a high-end hotel. We wanted to promote a sense of community by providing places where residents can socialise or entertain their own guests. The private dining room is one example, with a carefully curated selection of furniture and connections to an expansive terrace.

**Carr has designed many private residences in prestigious suburbs including Malvern. What do you bring from these projects to your apartment spaces?**

First and foremost, our work is driven by a detailed analysis of the future resident and their specific needs. We're also mindful to design interiors that are as relevant tomorrow as they are today. Our experience of Malvern is perhaps different to what people might expect. We see a lot of young, design-conscious professionals drawn to the Malvern neighbourhood looking for an apartment that's timeless, but with a design edge.

**What are you most proud of at Malvern Collective?**

I always enjoy the process of generating that very first design response, as it's often the one you come back to regardless of how many other variations you might produce. For Malvern Collective, what we're working towards is an elaboration of that very first sketch; a pure concept that's international in feel and yet totally appropriate to the local context. This is a world-class address, made for Malvern.

[carr.net.au](http://carr.net.au)



PROUDLY EST. 2013  
● ● ● ●  
**FOUR PILLARS**  
SMALL AUSTRALIAN  
DISTILLERY

**Uniquely (and deliciously)  
modern Australian gin.**



[www.fourpillarsgin.com.au](http://www.fourpillarsgin.com.au)  
Don't drink more, drink better.



## Ripple Effect

EXCLUSIVE AMENITY

The considered luxury of Malvern Collective extends far beyond your home. Enjoy exclusive access to a wide range of hotel-style facilities, from the private cinema to the rooftop pool. Carr has brought the same sophisticated aesthetic of the residences to these exclusive spaces, including the opulent spa and sauna. Sculpted from marble and stone, and featuring curved showers, timber finishes and a sunken spa, this is a place of seclusion and serenity designed to calm the senses.





AN IMPRESSIVE BACKDROP FOR INTIMATE GATHERINGS, MALVERN COLLECTIVE'S PRIVATE DINING ROOM IS IMBUED WITH UNDERSTATED ELEGANCE.

ARTIST IMPRESSION

WHETHER JOINING A BARBECUE FEAST OR TENDING TO THE HERB GARDEN, THE TERRACE IS FOR MALVERN COLLECTIVE RESIDENTS TO ENJOY TOGETHER.



ARTIST IMPRESSION



# Your Cheapest Ticket To Italy

SAGRA.COM.AU  
256 GLENFERRIE ROAD, MALVERN  
9079 5600  
CIAO@SAGRA.COM.AU



WIND DOWN AT SUNSET  
IN LEVEL 11'S LAP POOL,  
AND SOAK IN THE  
SPECTACULAR VIEWS.





### Hide & Seek

#### DISCOVERY

Running through the heart of Malvern Collective lies Station Place – a hidden, historic laneway brought back to life with a nod to Melbourne’s celebrated laneway culture. Incorporating bluestone brickwork to reflect the heritage of the area, Station Place will celebrate Malvern Collective’s new retail precinct, along with providing residents ease of access to Malvern train station.





## Balancing Act

WELLBEING

**M**alvern Collective is all about enjoying the best of modern living - mind, body and spirit. The ground floor has been designed to accommodate a wellness retreat, raising the bar for nourishing, inspiring and active pursuits. Whether working up a sweat in a class with fellow residents or taking some time for yourself to find inner peace, the latest practices will be available just downstairs. Your physical, mental and social wellbeing are all part of life at Malvern Collective.

FINDING BALANCE IN A BUSY LIFE IS MADE THAT LITTLE BIT EASIER WITH A PLACE TO WORK OUT JUST MOMENTS FROM HOME.



## We are committed to creating great specialty grade coffee

Little Things Coffee is a social enterprise with all profits donated exclusively to World Vision, funding community development and emergency relief for over 100 million people worldwide. Using unique coffee roasting techniques from around the world, Little Things small batch roast locally from their home in Blackburn.





All profits are exclusively donated to **World Vision**



**CAFÉS NOW OPEN**  
Malvern: Pop Up Café, Malvern Station, Station Place  
Blackburn: Roastery & Café, 78 Railway Road

Buy Online: [littletingscoffee.com.au](http://littletingscoffee.com.au)

[littletingscoffee](https://www.instagram.com/littletingscoffee)  





## Relaxed Flavour

—  
EPICURE

Great food and wine always brings people together. Among the relaxed eateries on offer will be the social heart of Malvern Collective: the reimagined Angel Tavern. Here, the award-winning studio of Technē, known for designing some of Melbourne's most iconic venues, has created a new destination to add to the ever-growing culinary scene of Malvern. A place of relaxed sophistication where residents and visitors alike can enjoy a meal with friends, or a long weekend afternoon in the sunny beer garden, this is where a local legend will be reborn.



## Q&A

AN INTERVIEW WITH STEVE MCKEAG  
DIRECTOR, TECHNĒ ARCHITECTURE + INTERIOR DESIGN



Since 2002, the multi-award-winning studio of Technē has contributed to Australia's modern design aesthetic, elevating its architectural expression onto the international stage. As the firm behind bringing The Angel Tavern back to life, Technē is renowned for creating iconic Australian pubs and restaurants that are unique, playful and stand the test of time.

**The social heart of Malvern Collective will be the reimaged Angel Tavern. What will people experience when they visit this new venue?**

All our pubs offer a journey. People enjoy a sense of discovery as they move through a space, which is why we create a variety of venues within one venue – such as at Terminus Hotel or Garden State Hotel. At Malvern Collective, we're creating a social hub with a similar experience. The pub will feature a collection of spaces including a central bar and terrace garden on Glenferrie Road, along with dining and function spaces, and plenty of 'nooks and crannies' where friends can gather.

**The Angel Tavern has a rich history. How did you approach that aspect of its design?**

Materiality is a key way to express the heritage of a space. We're looking at which existing walls, arches and historic elements we can retain to showcase the Angel Tavern's origins. The walls divide the spaces and provide us the framework, while the extraordinary ceilings and front bar have a lot of beautiful ornate details we aim to preserve.

**Technē is renowned for its revitalisation of classic Melbourne pubs such as Prahran Hotel, Garden State Hotel and now The Espy. How did you approach the heritage of those venues?**

For Garden State, we retained as much of the existing building's fabric as possible, including the original textile factory's sawtooth roof. At Prahran Hotel, we were able to keep the art deco façade, and that led to the use of circular motifs throughout the interiors. At The Espy, it was a similar story – being mindful of its legacy and the dedication it has inspired in patrons over the years. Restoring and reimagining these venues to their former glory is intrinsic to all our projects.

**So many Technē venues are considered Melbourne dining institutions, such as Brunetti, Tonka and Movida. How important is the interior design to define a destination?**

It's integral. We spend so much of our time inside buildings, it's critical to consider how each of these spaces will be experienced by the individual and how the design contributes to the destination's atmosphere as a whole. The interior design of a venue is an extension of the overall experience. For us, this means developing iconic, vibrant and distinctive spaces that people will love spending time in.

**What do you think are the key elements for a modern day pub's success?**

It's really about creating a unique experience and captivating ambience. All our venues honour and reinterpret the traditions of an Aussie pub like the front bar and beer garden, combined with a new openness, versatility and sense of exploration that unfolds with every visit.

**Melbourne is a social city with a strong gastronomic scene. What trends have you seen during your time at Technē? Is there a current style you can define?**

There has definitely been a shift in the way hospitality venues are being designed. It's less about the traditional constraints of the older typology and more about creating open and versatile spaces that act as an extension of the residential space.

**For the residents of Malvern Collective, what will it mean to have The Angel Tavern at their doorstep?**

As well as a new iconic Melbourne destination, we're creating a place where residents can enjoy their own sense of community. This will be a natural extension of their apartment – the perfect spot to come together with friends for a casual beer or with family for a special celebration. Plus, it will be imbued with character and a real sense of discovery. By weaving historic details through the design we're able to write a brand new chapter for The Angel Tavern, without erasing the last one.

[techne.com.au](http://techne.com.au)



PRAHRAN HOTEL, PRAHRAN BY TECHNE  
PHOTO: PETER CLARKE



UNTIED, BARANGAROO, NSW BY TECHNÉ  
PHOTO: TOM BLACHFORD



TONKA, MELBOURNE BY TECHNÉ  
PHOTO: TOM BLACHFORD



**MALVERN COLLECTIVE**

*Cnr Glenferrie & Dandenong Road  
Malvern Victoria 3144 Australia*

-  
**kokodaproperty.com.au**  
**Phone 1800 383 383**



**carr**



Information, dimensions and specifications herein are subject to change without notice and descriptions provided may not be applicable to every lot within the development. No responsibility is accepted by the seller or its agents for any other information contained herein or for any action taken in reliance thereon. Illustrations, architectural and artist impressions are indicative only. Furniture shown is for illustrative purposes only and is not included with the property. Whilst all information in relation to this development has been prepared with the utmost care and attention to its accuracy, no warranty can be given and therefore interested parties should rely on their own enquiries. This magazine does not form part of, and is not, an offer or a contract of sale.