

Hattan



When you choose Hattan, you are investing in a space that instills both a physical and emotional connection to its design.

Hattan is quality. Quality is what makes Hattan a home.

Home photography in this brochure may depict fixtures, finishes and features not supplied by Hattan. For full details please talk to your Sales Consultant.

The Hattan expert design team have created a contemporary, livable and stunning array of home designs, facades and colour schemes with maximum rental returns and capital gains in mind.

Hattan has selected premium inclusions that will enable you or your tenants with an extra level of quality, ensuring your new home has a premium fit and finish, which could increase your capital growth.

Hattan



# CONTENTS

8.5m Floorplan Range	6
10.5m Floorplan Range	18
12.5m Floorplan Range	30
14m Floorplan Range	42
16m Floorplan Range	50
Double Storey Floorplan Range	56
Hattan Turnkey Inclusions	64
Colour Schemes	74
Buying Process	98
Build Process	100

Single Storey

# 8.5m Floorplan Range



Single Storey  
8.5m  
Facade  
Range



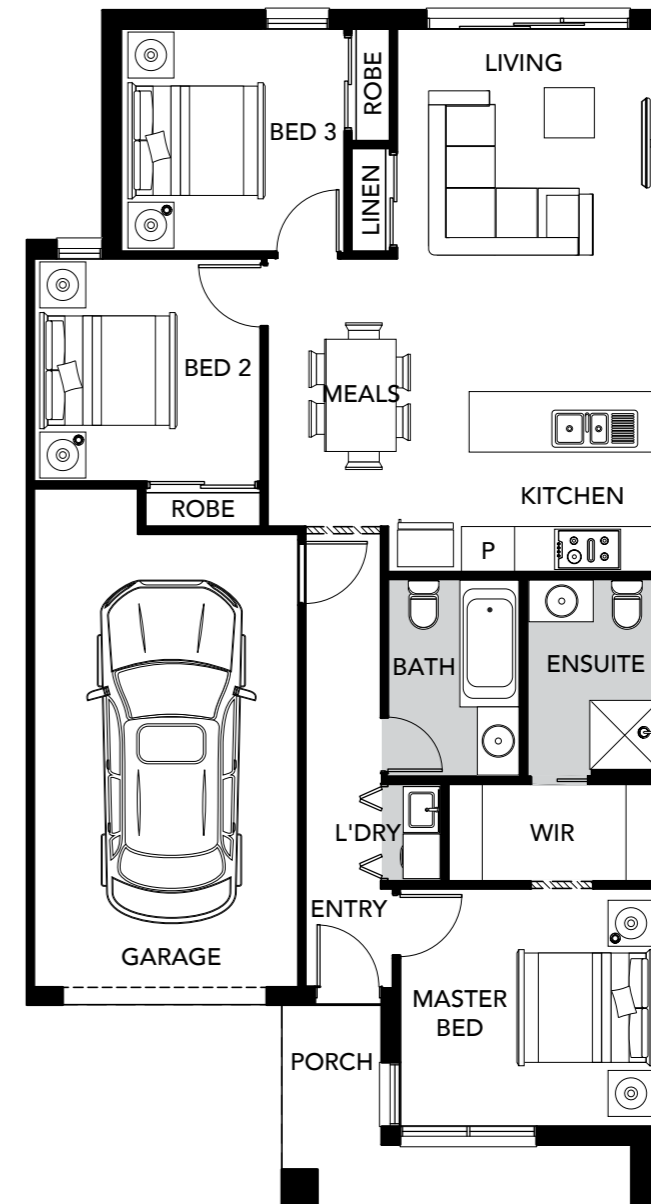


# Cooper

3 BED | 2 BATH | 1 CAR

Lot Width	8.5m
Lot Length	21m
Squares	13 SQ

The Cooper offers three bedrooms, including a master bedroom with a separate ensuite bathroom and walk-in robe. The open-plan kitchen, meals and living area are positioned to the rear of the home, making this space perfect for entertaining.



All images in this brochure are for illustrative purposes only and while every effort has been made to accurately represent colours, finishes and products, actual items may vary. Pricing should be used as a guide only. Pricing is valid from Aug 2021 and is correct at the time of printing and subject to change without notice. Melbourne build region. Hattan reserves the right to alter pricing, images or descriptions without notice. See your Hattan Consultant for further details on pricing and available options.

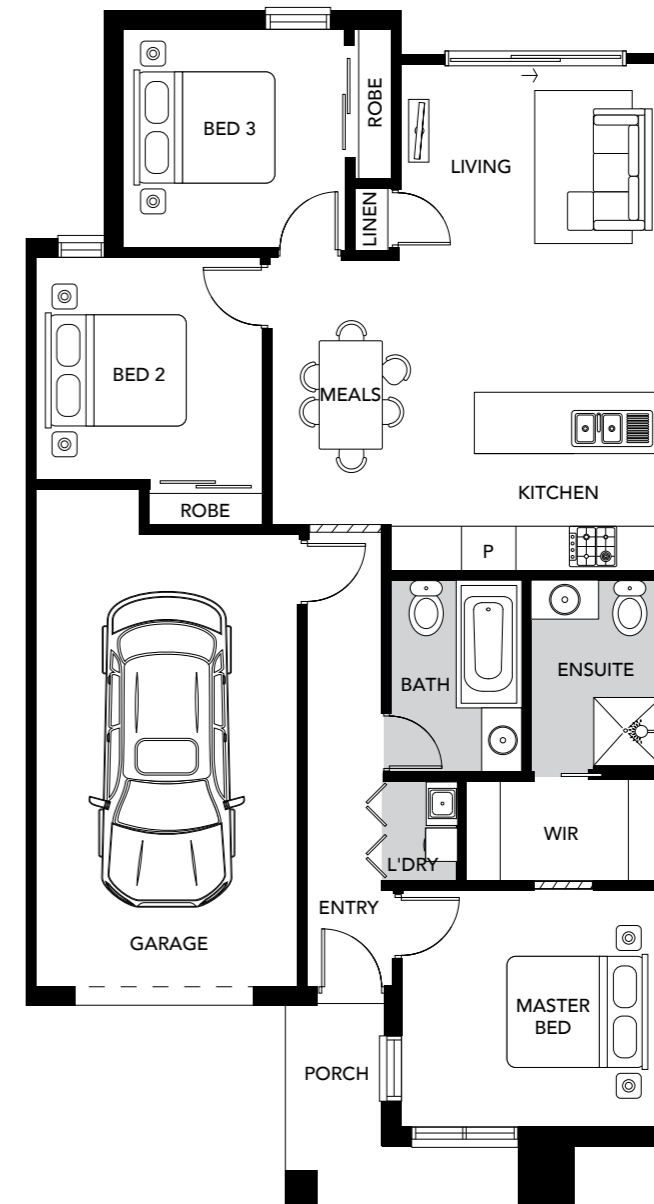


# Astor

3 BED | 2 BATH | 1 CAR

Lot Width	8.5m
Lot Length	21m
Squares	13 SQ

The Astor is a specifically designed home for blocks with a north or south orientation, and with an open-plan living and kitchen area, the Astor is perfect for families. The Astor offers three bedrooms, including a light-filled master bedroom with and ensuite bathroom and spacious walk-in robe.



All images in this brochure are for illustrative purposes only and while every effort has been made to accurately represent colours, finishes and products, actual items may vary. Pricing should be used as a guide only. Pricing is valid from Aug 2021 and is correct at the time of printing and subject to change without notice. Melbourne build region. Hattan reserves the right to alter pricing, images or descriptions without notice. See your Hattan Consultant for further details on pricing and available options.

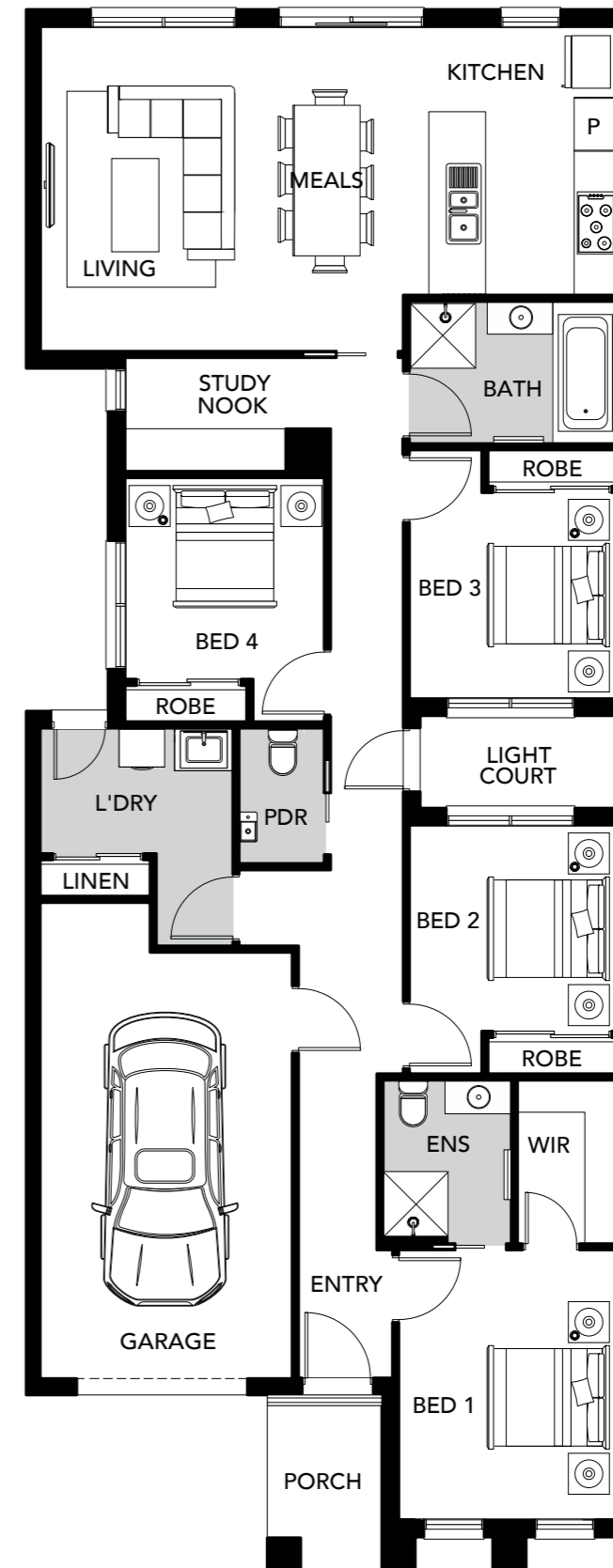


# Surrey

4 BED | 2 BATH | 1 CAR

Lot Width	8.5m
Lot Length	28m
Squares	19 SQ

A spacious home design, the Surrey boasts four bedrooms, including a master bedroom with an ensuite and a walk-in robe. This home offers an open plan living area, a study, and a light court, making it perfect for family living.



All images in this brochure are for illustrative purposes only and while every effort has been made to accurately represent colours, finishes and products, actual items may vary. Pricing should be used as a guide only. Pricing is valid from Aug 2021 and is correct at the time of printing and subject to change without notice. Melbourne build region. Hattan reserves the right to alter pricing, images or descriptions without notice. See your Hattan Consultant for further details on pricing and available options.



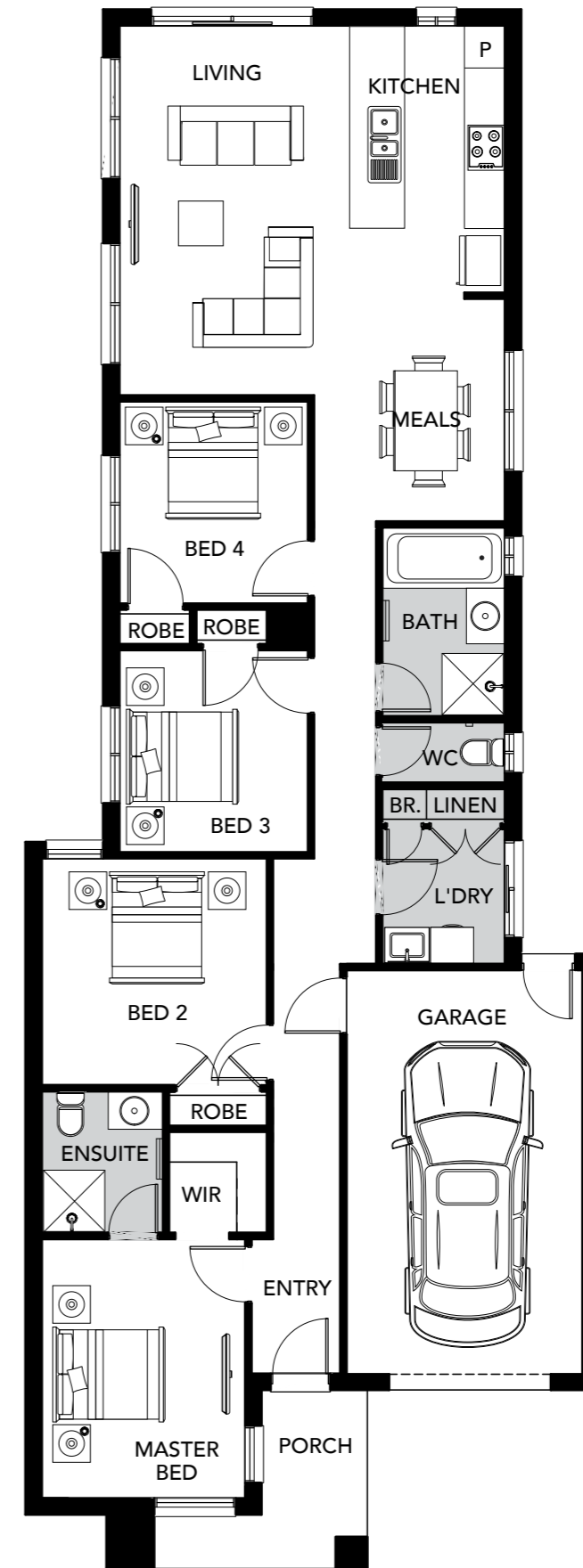


# Mercer

4 BED | 2 BATH | 1 CAR

Lot Width	8.5m
Lot Length	30m
Squares	17 SQ

The Mercer is the perfect home for family living. This light-filled home offers four bedrooms, including a master bedroom with a separate ensuite bathroom and walk-in robe. The spacious open-planned living area creates the perfect space for entertaining and bringing the family together.



All images in this brochure are for illustrative purposes only and while every effort has been made to accurately represent colours, finishes and products, actual items may vary. Pricing should be used as a guide only. Pricing is valid from Aug 2021 and is correct at the time of printing and subject to change without notice. Melbourne build region. Hattan reserves the right to alter pricing, images or descriptions without notice. See your Hattan Consultant for further details on pricing and available options.

Single Storey

# 10.5m Floorplan Range



Single Storey  
**10.5m  
Facade  
Range**



BERKLEY



BELMONT



GEMINI



HAYWORTH



HAMPTON



PORTSEA

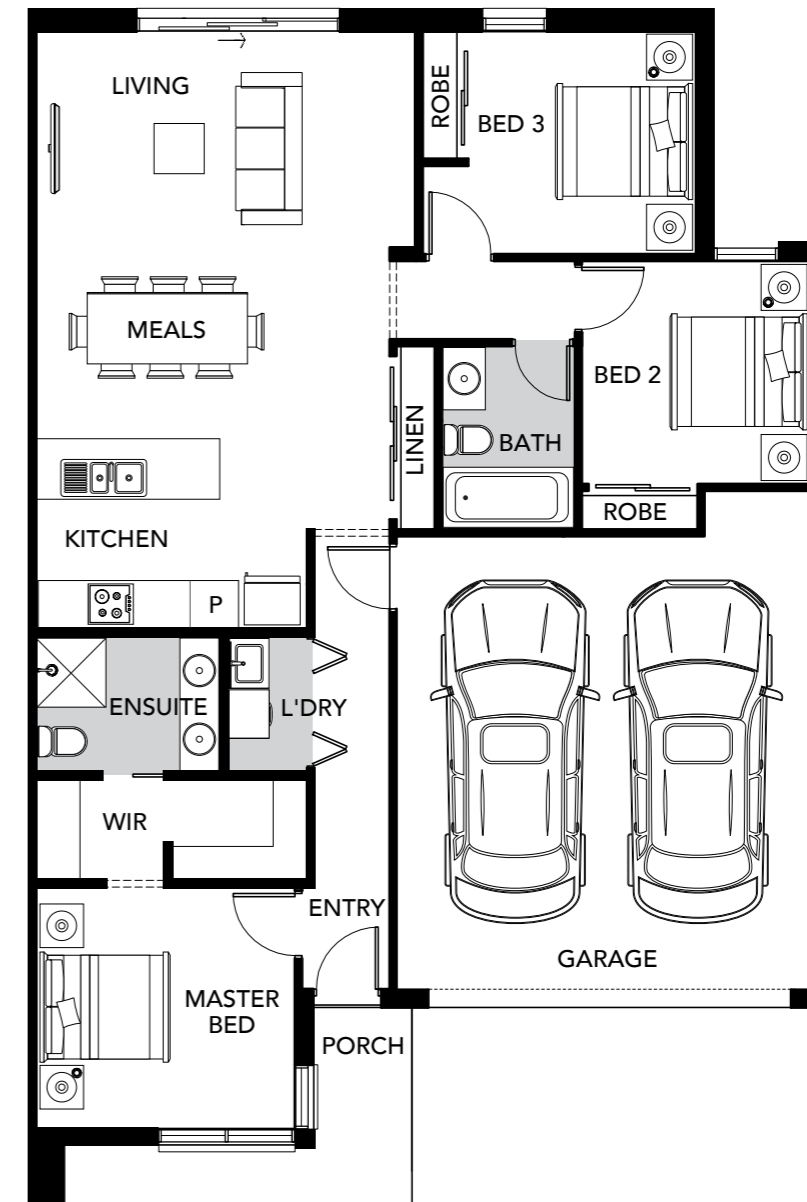


# Claremont

3 BED | 2 BATH | 2 CAR

Lot Width	10.5m
Lot Length	21m
Squares	16 SQ

The Claremont offers three bedrooms, including a light-filled master bedroom with an ensuite bathroom and spacious walk-in robe. A smartly designed living and kitchen space are located at the home's rear, making it perfect for entertaining.



All images in this brochure are for illustrative purposes only and while every effort has been made to accurately represent colours, finishes and products, actual items may vary. Pricing should be used as a guide only. Pricing is valid from Aug 2021 and is correct at the time of printing and subject to change without notice. Melbourne build region. Hattan reserves the right to alter pricing, images or descriptions without notice. See your Hattan Consultant for further details on pricing and available options.

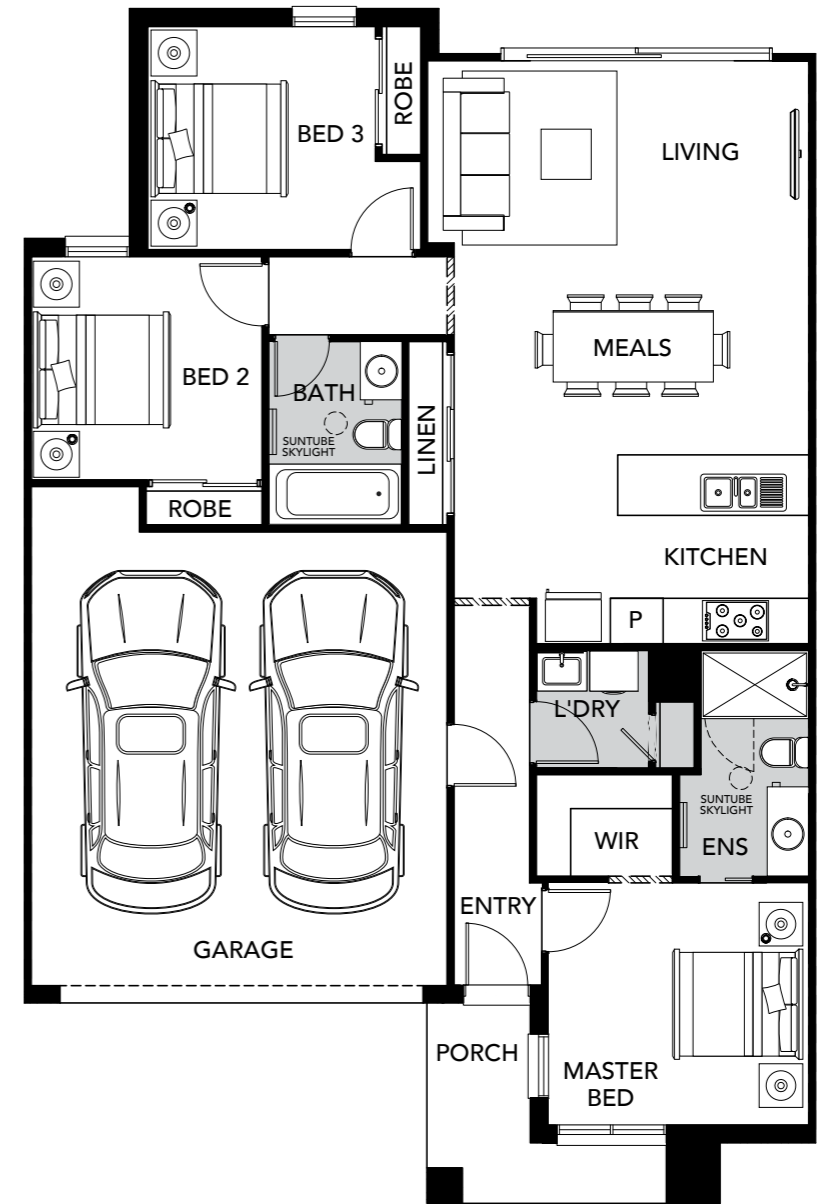


# Bond

3 BED | 2 BATH | 2 CAR

Lot Width	10.5m
Lot Length	21m
Squares	16 SQ

The Bond is a spacious and light-filled home, perfect for family living. This design offers three bedrooms, including a master bedroom with an ensuite bathroom. The open-plan kitchen, dining and living area creates the perfect space for family entertainment.



All images in this brochure are for illustrative purposes only and while every effort has been made to accurately represent colours, finishes and products, actual items may vary. Pricing should be used as a guide only. Pricing is valid from Aug 2021 and is correct at the time of printing and subject to change without notice. Melbourne build region. Hattan reserves the right to alter pricing, images or descriptions without notice. See your Hattan Consultant for further details on pricing and available options.

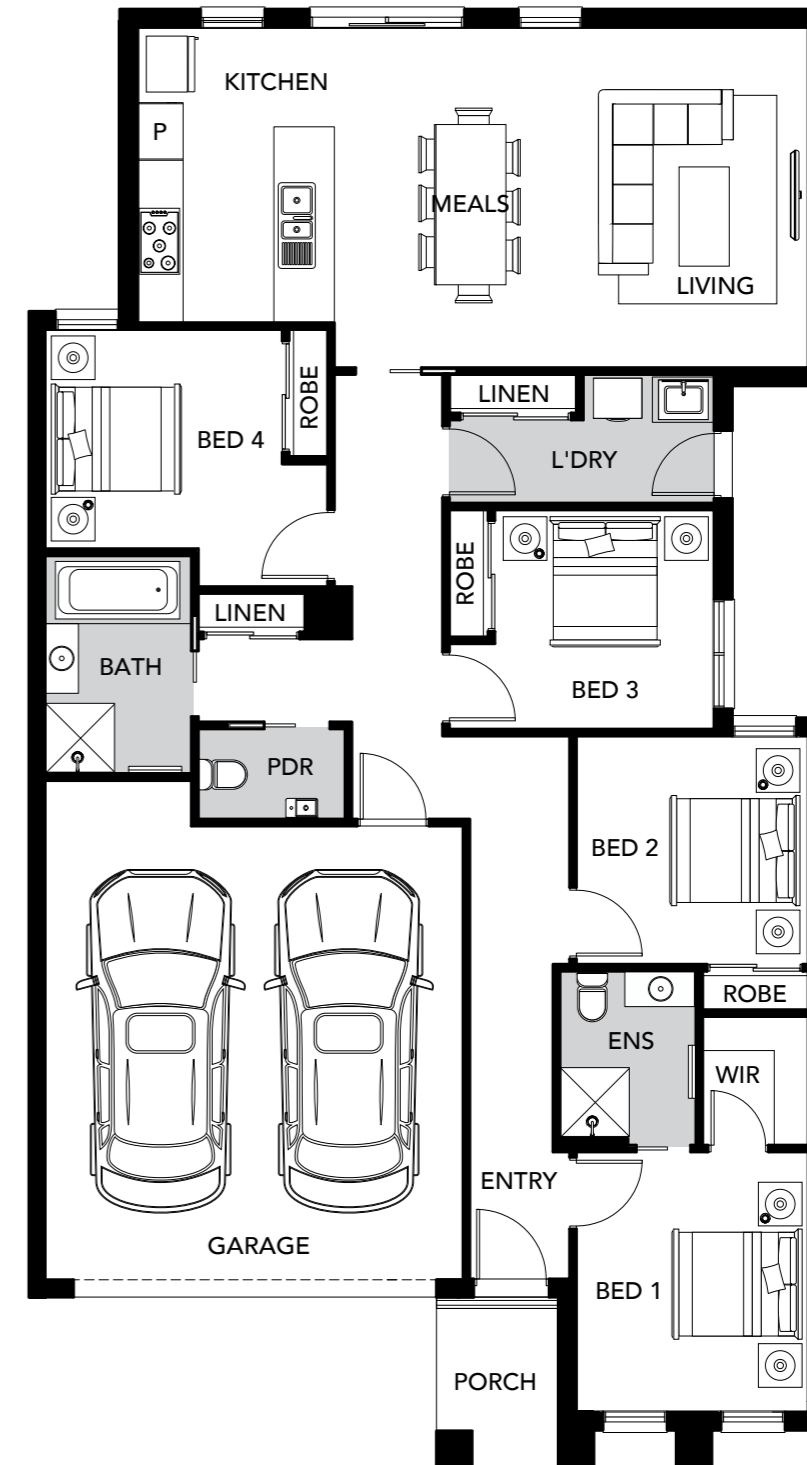


# Chapel

4 BED | 2 BATH | 2 CAR

Lot Width	10.5m
Lot Length	25m
Squares	20 SQ

The Chapel boasts four bedrooms, two bathrooms and a 2-car garage. The kitchen, meals and living areas link seamlessly, leading out to the backyard, creating the perfect space to spend time together as a family.



All images in this brochure are for illustrative purposes only and while every effort has been made to accurately represent colours, finishes and products, actual items may vary. Pricing should be used as a guide only. Pricing is valid from Aug 2021 and is correct at the time of printing and subject to change without notice. Melbourne build region. Hattan reserves the right to alter pricing, images or descriptions without notice. See your Hattan Consultant for further details on pricing and available options.

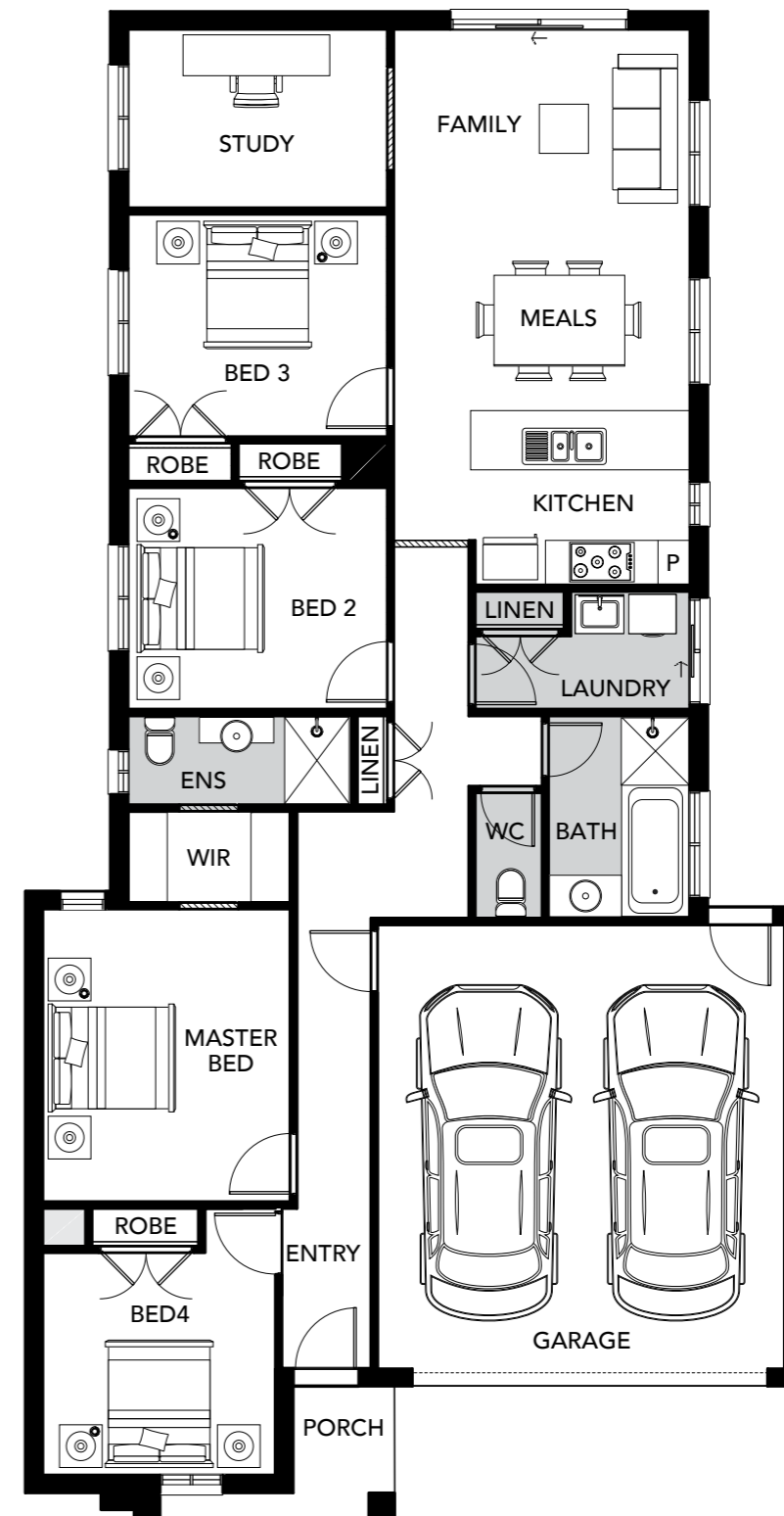


# Stanton

4 BED | 2 BATH | 2 CAR

Lot Width	10.5m
Lot Length	28m
Squares	19 SQ

It's easy to love the Stanton home. Each room has been meticulously designed with purpose, which means you have the ability to cook, entertain and study all within this stylish home. The Stanton offers an open kitchen and living space, four spacious bedrooms, and a separate study.



All images in this brochure are for illustrative purposes only and while every effort has been made to accurately represent colours, finishes and products, actual items may vary. Pricing should be used as a guide only. Pricing is valid from Aug 2021 and is correct at the time of printing and subject to change without notice. Melbourne build region. Hattan reserves the right to alter pricing, images or descriptions without notice. See your Hattan Consultant for further details on pricing and available options.

Single Storey

# 12.5m Floorplan Range





Single Storey  
**12.5m  
Facade  
Range**



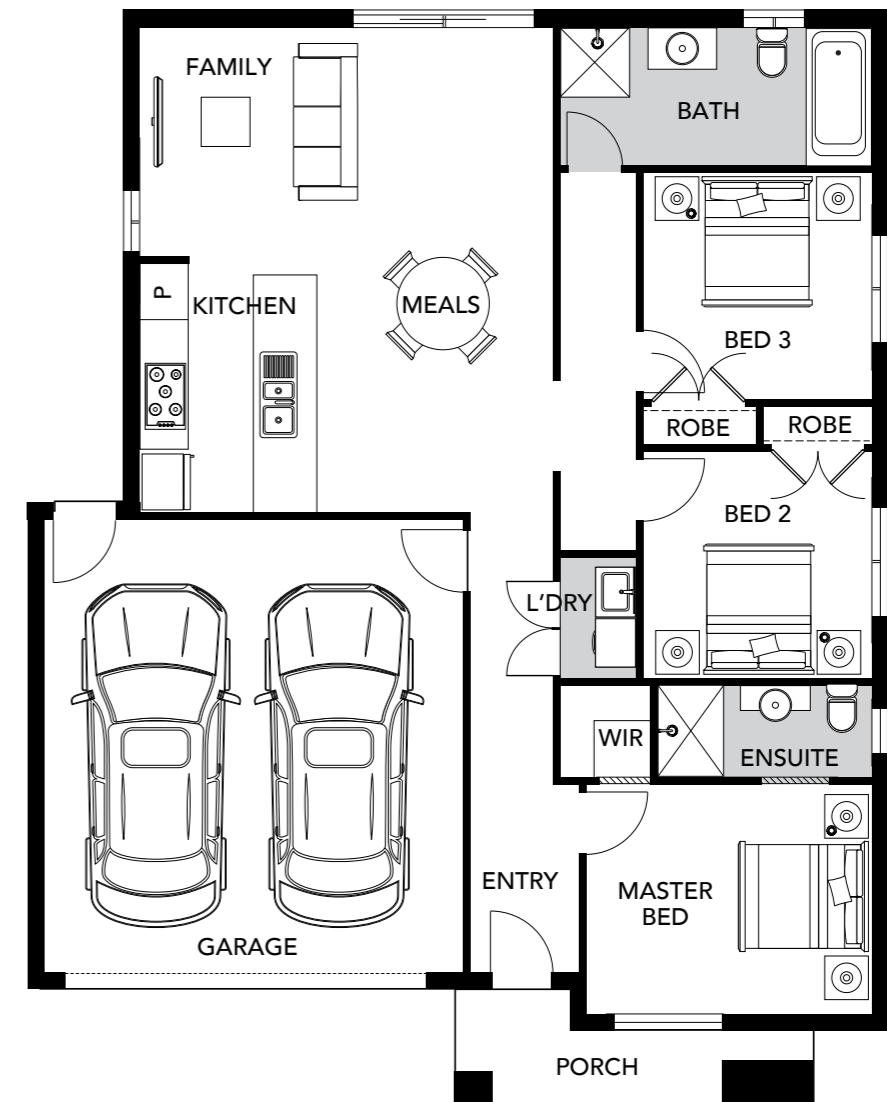


# Bleecker

3 BED | 2 BATH | 2 CAR

Lot Width	12.5m
Lot Length	21m
Squares	16 SQ

The Bleecker is a creative home design with a space-saving kitchen and living area. It comprises three bedrooms, including a light-filled master bedroom positioned at the front of the home. This home is perfect for growing families with two bathrooms and a double-car garage.



All images in this brochure are for illustrative purposes only and while every effort has been made to accurately represent colours, finishes and products, actual items may vary. Pricing should be used as a guide only. Pricing is valid from Aug 2021 and is correct at the time of printing and subject to change without notice. Melbourne build region. Hattan reserves the right to alter pricing, images or descriptions without notice. See your Hattan Consultant for further details on pricing and available options.

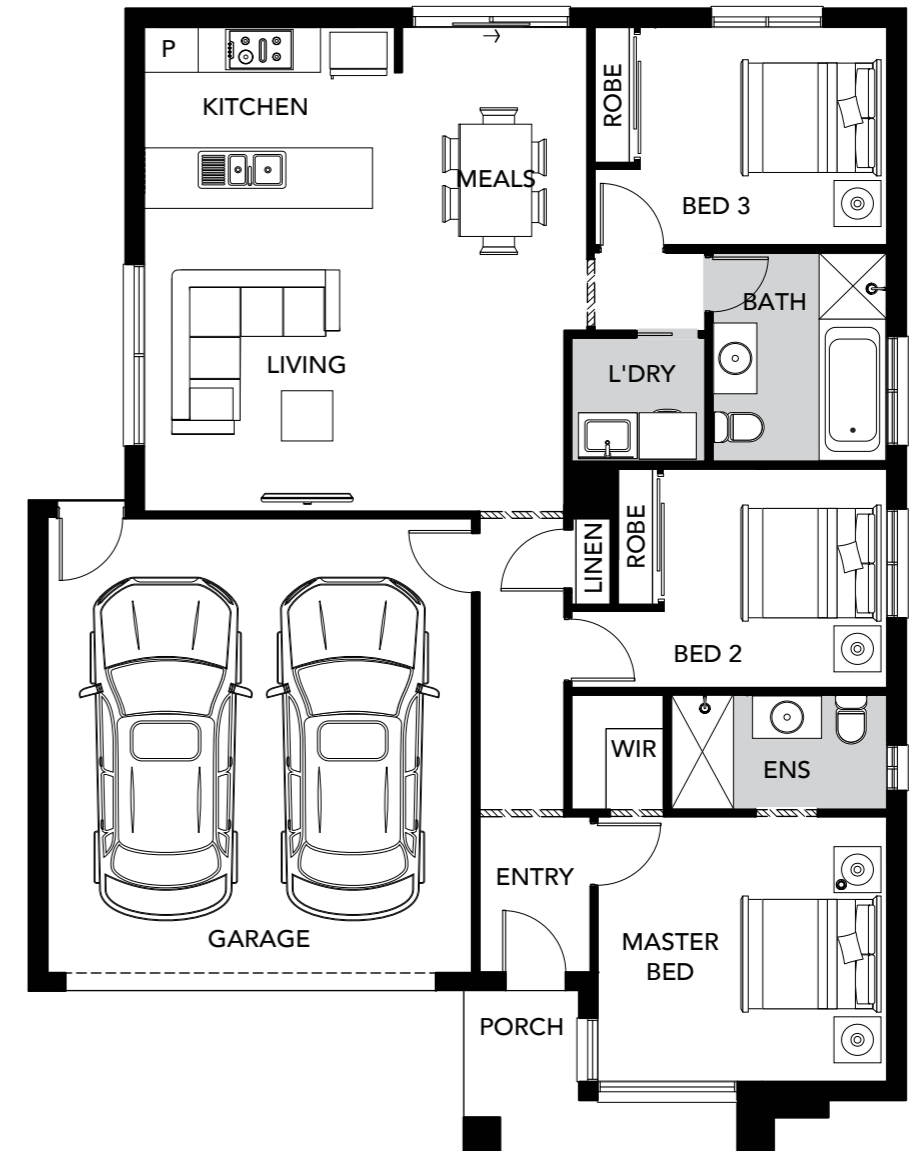


# Calder

3 BED | 2 BATH | 2 CAR

Lot Width	12.5m
Lot Length	21m
Squares	16 SQ

The Calder offers three bedrooms, including a master bedroom located at the front of the home with an ensuite bathroom and walk-in robe. The open-plan kitchen, meals and living area are positioned to the rear of the home, making this space perfect for entertaining.



All images in this brochure are for illustrative purposes only and while every effort has been made to accurately represent colours, finishes and products, actual items may vary. Pricing should be used as a guide only. Pricing is valid from Aug 2021 and is correct at the time of printing and subject to change without notice. Melbourne build region. Hattan reserves the right to alter pricing, images or descriptions without notice. See your Hattan Consultant for further details on pricing and available options.

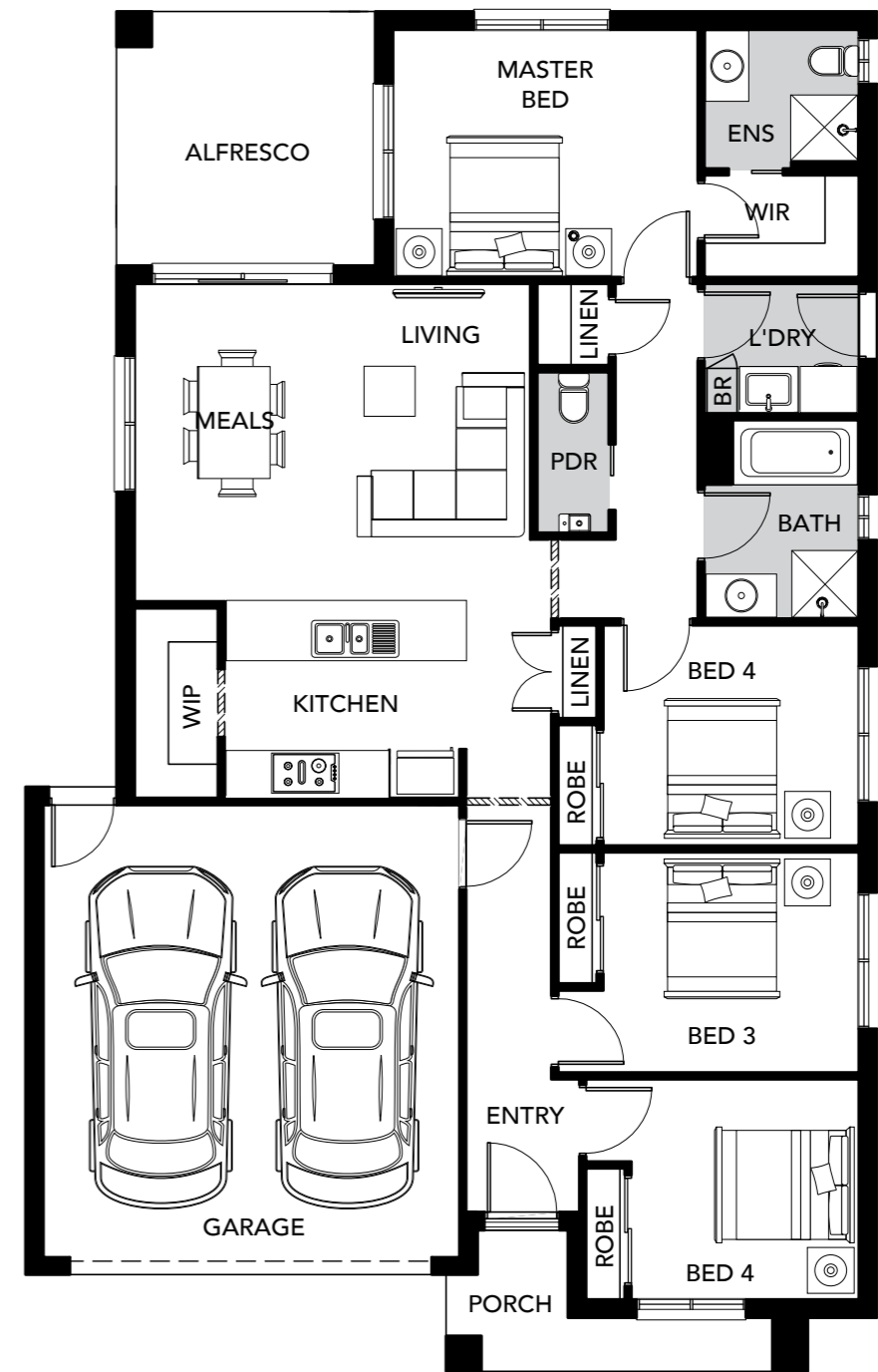


# Duke

4 BED | 2.5 BATH | 2 CAR

Lot Width	12.5m
Lot Length	25m
Squares	20 SQ

This open floor plan is perfect for growing families, featuring an expansive walk-in pantry and full laundry. The open layout provides ample space for everyone to spread out and enjoy. Large windows let in plenty of natural light and the open plan kitchen flows seamlessly into the dining and living areas, making it perfect for entertaining. The bedrooms are well-proportioned, with ample storage and the master suite boasts an en-suite bathroom.



All images in this brochure are for illustrative purposes only and while every effort has been made to accurately represent colours, finishes and products, actual items may vary. Pricing should be used as a guide only. Pricing is valid from Aug 2021 and is correct at the time of printing and subject to change without notice. Melbourne build region. Hattan reserves the right to alter pricing, images or descriptions without notice. See your Hattan Consultant for further details on pricing and available options.

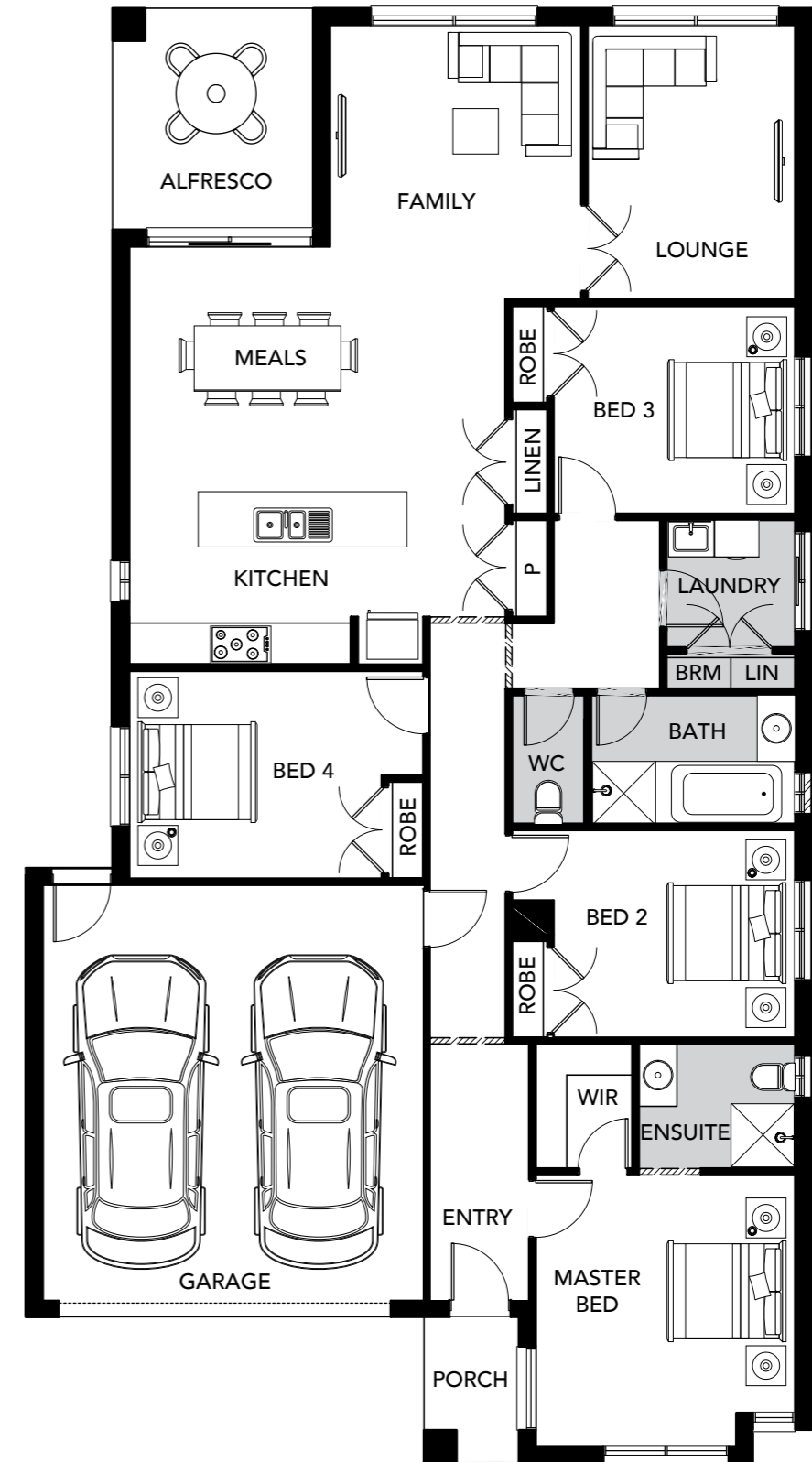


# Delancy

4 BED | 2 BATH | 2 CAR

Lot Width	12.5m
Lot Length	28m
Squares	23 SQ

The Delancy is the ideal floorplan for growing families. This home offers ample living space, a spacious lounge room, and an open living area. With four bedrooms evenly positioned around the home, this home offers plenty of private retreats for the family to enjoy.



All images in this brochure are for illustrative purposes only and while every effort has been made to accurately represent colours, finishes and products, actual items may vary. Pricing should be used as a guide only. Pricing is valid from Aug 2021 and is correct at the time of printing and subject to change without notice. Melbourne build region. Hattan reserves the right to alter pricing, images or descriptions without notice. See your Hattan Consultant for further details on pricing and available options.

Single Storey

# 14m Floorplan Range



Single Storey

# 14m Facade Range





# Rivington

4 BED | 2 BATH | 2 CAR

Lot Width	14m
Lot Length	28m
Squares	25 SQ

Designed with large families in mind, the Rivington offers the whole family a stylish place to work, rest and play. This contemporary design is the perfect family home, composed of four bedrooms, including an extra-large master bedroom, complete with its own ensuite and walk-in robe and two living spaces.



All images in this brochure are for illustrative purposes only and while every effort has been made to accurately represent colours, finishes and products, actual items may vary. Pricing should be used as a guide only. Pricing is valid from Aug 2021 and is correct at the time of printing and subject to change without notice. Melbourne build region. Hattan reserves the right to alter pricing, images or descriptions without notice. See your Hattan Consultant for further details on pricing and available options.



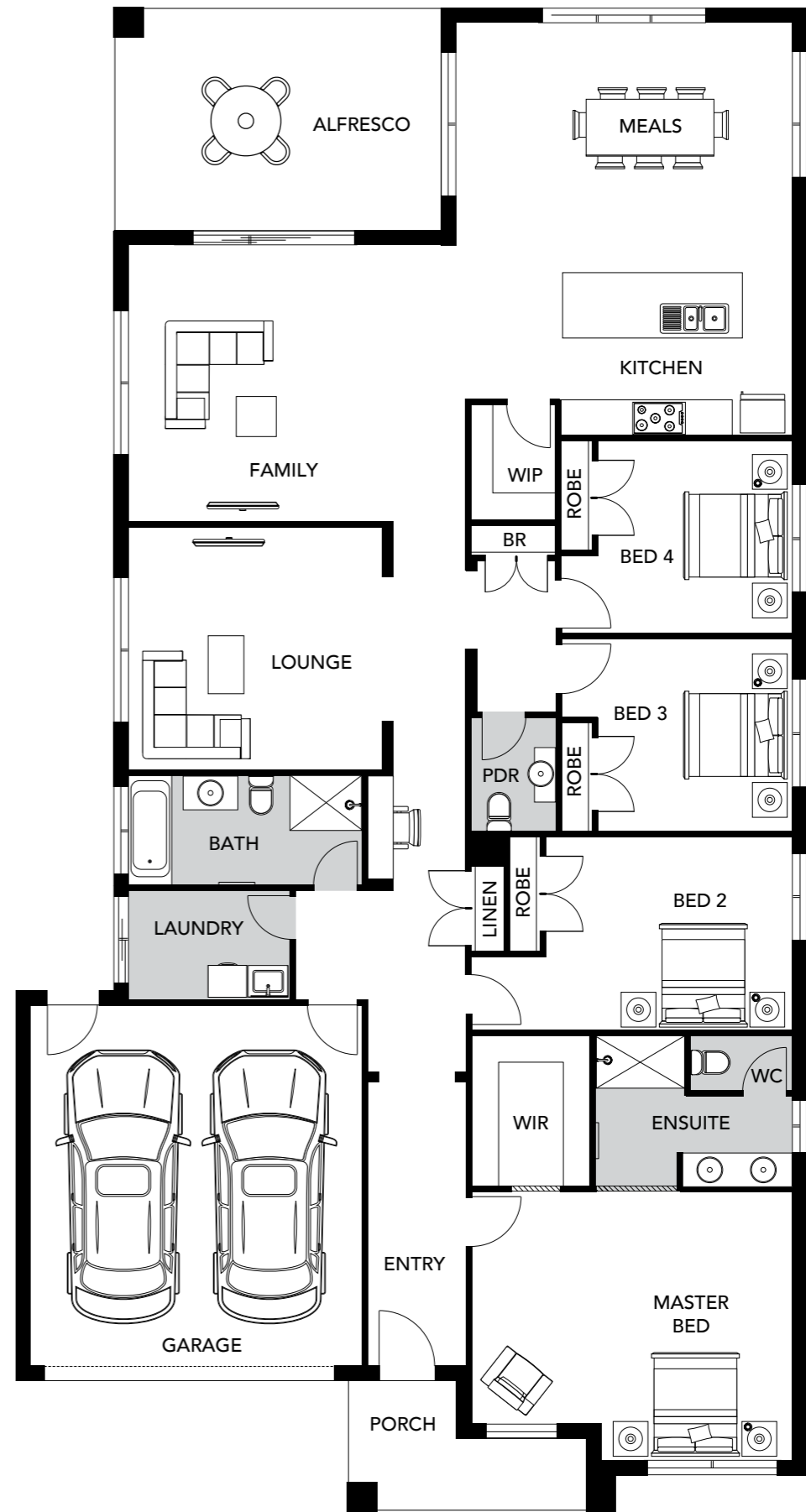


# Chambers

4 BED | 2 BATH | 2 CAR

Lot Width	14m
Lot Length	32m
Squares	32 SQ

The Chambers offers four spacious bedrooms, including a light-filled master bedroom complete with an ensuite and walk-in robe. The kitchen, meals and living areas link seamlessly, making it perfect for entertaining.



All images in this brochure are for illustrative purposes only and while every effort has been made to accurately represent colours, finishes and products, actual items may vary. Pricing should be used as a guide only. Pricing is valid from Aug 2021 and is correct at the time of printing and subject to change without notice. Melbourne build region. Hattan reserves the right to alter pricing, images or descriptions without notice. See your Hattan Consultant for further details on pricing and available options.

Single Storey

# 16m Floorplan Range



Single Storey

# 16m Facade Range



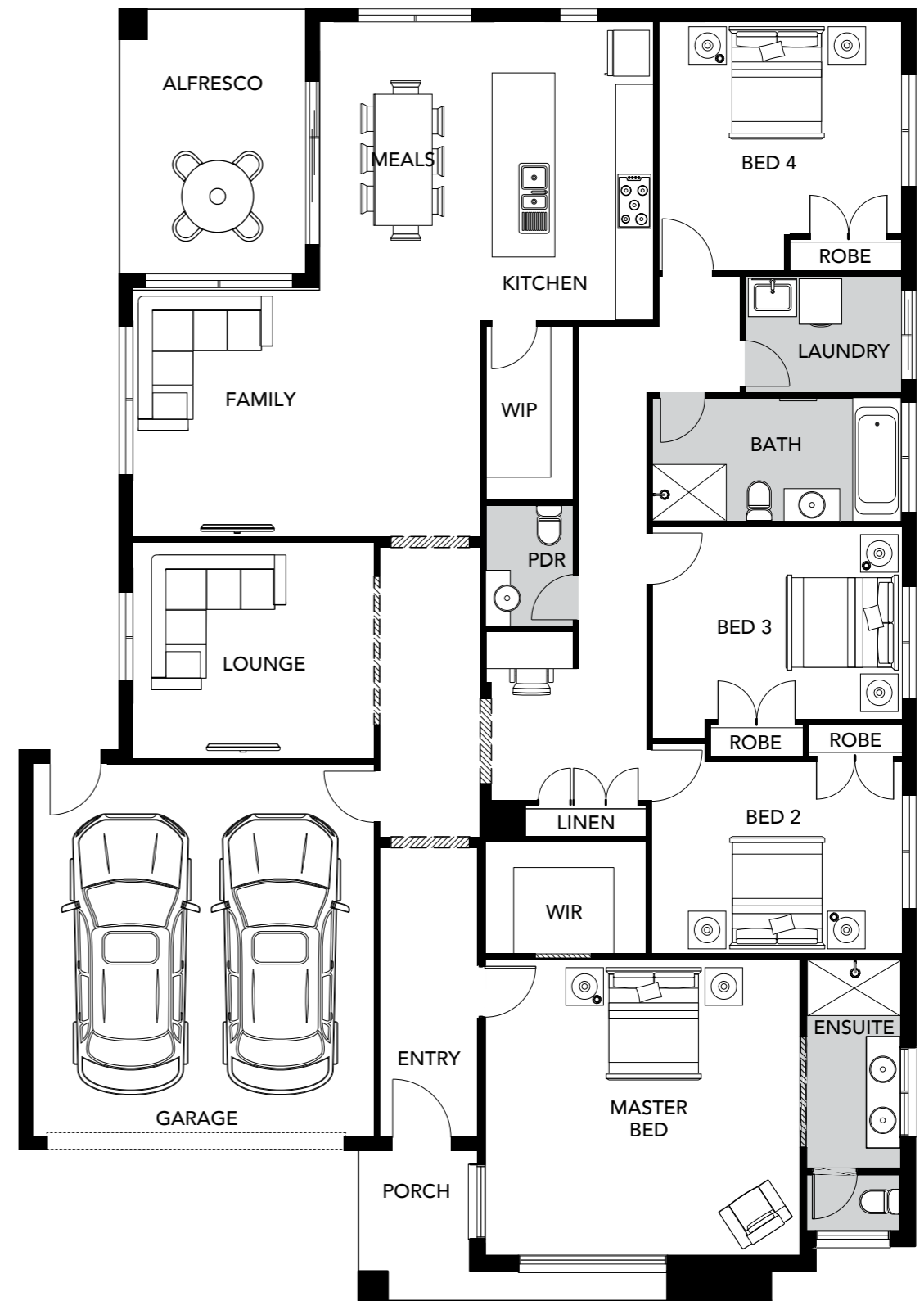


# Waverley

4 BED | 2 BATH | 2 CAR

Lot Width	16m
Lot Length	28m
Squares	28 SQ

The Waverley offers four bedrooms, including an extra-large master bedroom with its ensuite and walk-in robe and two living spaces. The kitchen and meals area extends out onto an alfresco area creating the perfect space to spend time with your friends and family.



All images in this brochure are for illustrative purposes only and while every effort has been made to accurately represent colours, finishes and products, actual items may vary. Pricing should be used as a guide only. Pricing is valid from Aug 2021 and is correct at the time of printing and subject to change without notice. Melbourne build region. Hattan reserves the right to alter pricing, images or descriptions without notice. See your Hattan Consultant for further details on pricing and available options.

Double Storey

# Floorplan Range



Double Storey  
**Facade  
Range**



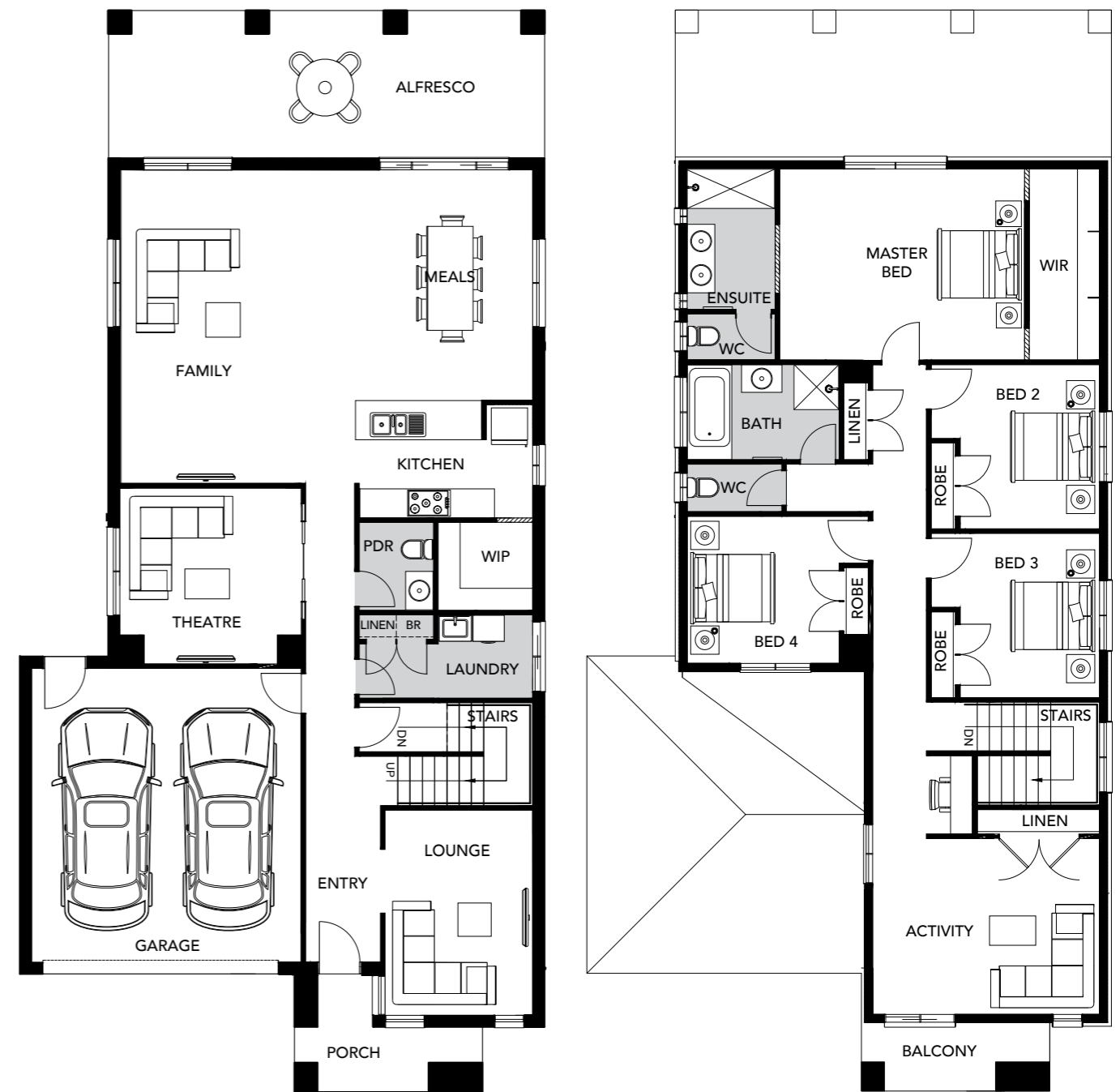


# Greenwich

4 BED | 3 BATH | 2 CAR

Lot Width	12.5m
Lot Length	30m
Squares	35 SQ

Designed with large families in mind, the Greenwich is a spacious double-storey home that offers the whole family a stylish place to work, rest and play. This design boasts four bedrooms, including an extra-large master bedroom, complete with its own ensuite and walk-in robe.



All images in this brochure are for illustrative purposes only and while every effort has been made to accurately represent colours, finishes and products, actual items may vary. Pricing should be used as a guide only. Pricing is valid from Aug 2021 and is correct at the time of printing and subject to change without notice. Melbourne build region. Hattan reserves the right to alter pricing, images or descriptions without notice. See your Hattan Consultant for further details on pricing and available options.



# Lexington

4 BED | 2 BATH | 2 CAR

Lot Width	14m
Lot Length	28m
Squares	41 SQ

A truly stunning design, the Lexington is a double-storey home that boasts 4 bedrooms, including an extra-large master bedroom with its own ensuite and walk-in robe. The Lexington offers a living space that opens directly to an outdoor alfresco area, as well as the additional convenience of a laundry with extra built-in cupboards for storage.



All images in this brochure are for illustrative purposes only and while every effort has been made to accurately represent colours, finishes and products, actual items may vary. Pricing should be used as a guide only. Pricing is valid from Aug 2021 and is correct at the time of printing and subject to change without notice. Melbourne build region. Hattan reserves the right to alter pricing, images or descriptions without notice. See your Hattan Consultant for further details on pricing and available options.



A photograph of a modern bathroom sink. The sink is white and bowl-shaped, set on a light-colored countertop. A chrome faucet is mounted on the wall behind it. To the left of the sink, there is a white rectangular vase filled with greenery and orange flowers. In the foreground, there are folded towels, one with a striped pattern and one yellow. The background shows a white wall with a framed abstract painting in shades of pink and white.

Hattan

# Turnkey Inclusions

Hattan's turnkey inclusions feature quality products and finishes, ensuring your home is something to treasure each time you step through the front door.

A turnkey house is one that is purchased at a fixed price and when completed is move-in ready with no additional inclusions or costs required. All you need to do is turn the key and move in.

A turn-key home might be off-the-plan, ready built, constructed on land you already own, or built as part of a house and land package. In any case, it's a hassle-free shortcut to a new home and an easy source of passive income should it be an investment property instead.

Hattan

Turnkey homes include all essential connections, like power, water and sewerage, plus basic living and utility essentials required for occupation.

- ✔ Full Turnkey
- ✔ 2590mm Ceiling Heights
- ✔ Fencing and Landscaping
- ✔ Alarm System
- ✔ LED Lighting throughout
- ✔ Stone Benchtops to Kitchen, Bathroom and Ensuite
- ✔ Block-out Blinds
- ✔ European Kitchen Appliances
- ✔ Ducted Gas Heating
- ✔ Split System Air-Condition (To Living)

One of the most attractive features of buying a turnkey home is the saved time.

Your time is precious and the real estate market can be unpredictable. So having a home ready and waiting for inhabitants can be ideal. Plus, the hands-off approach means you will have a smooth and enjoyable building process from start to completion.

Even if you already manage other investment properties, turn key homes can help you diversify your portfolio. Having real estate ready to go means you can start earning income instantly.

The Hattan expert design team have created a contemporary, livable & stunning array of home designs, facades & colour schemes with maximum rental returns and capital gains in mind.

Hattan

# Hattan Turnkey Inclusions



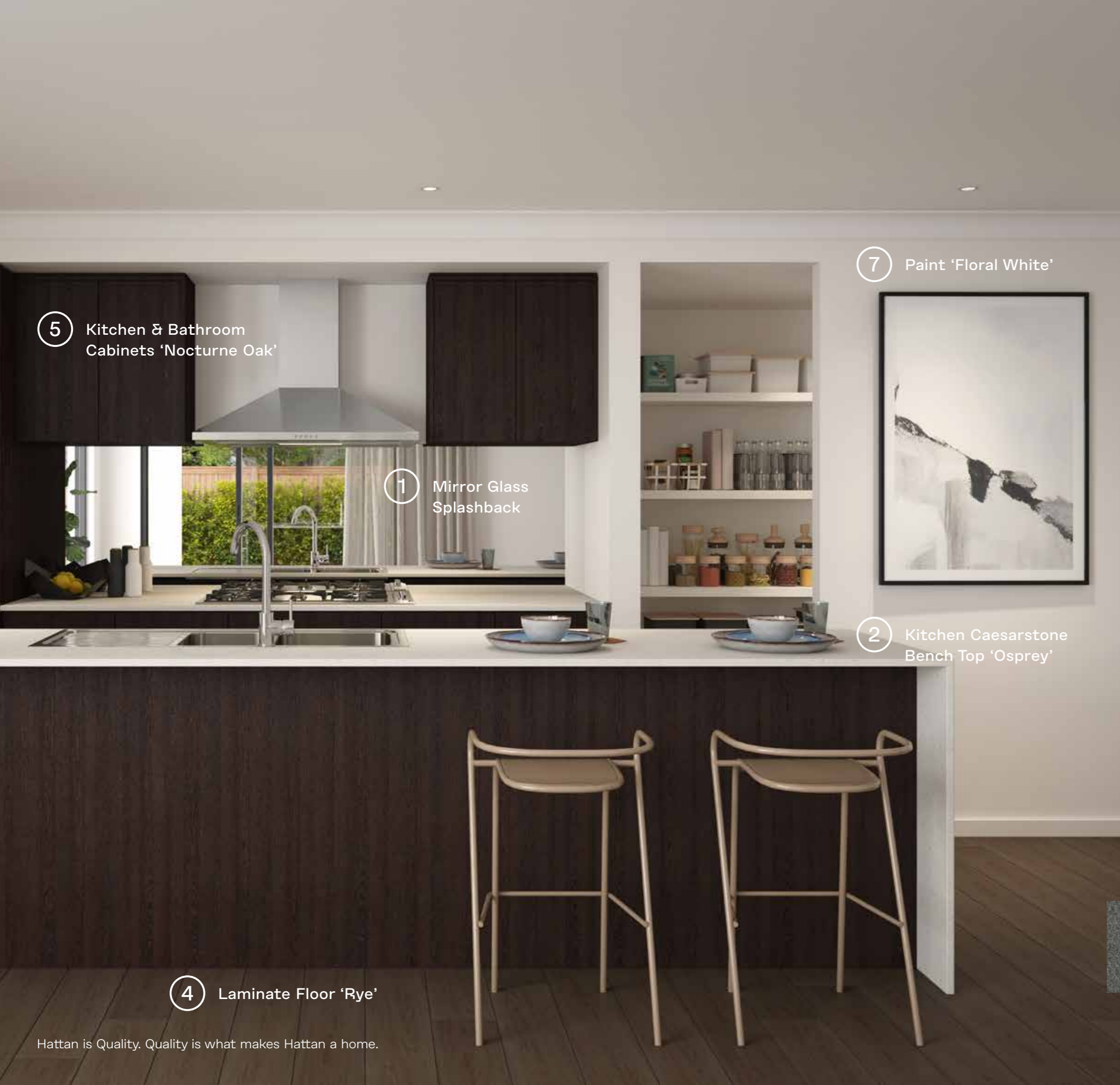
<b>Site Works</b>	Concrete waffle pod slab, engineer designed "M" up to "P" class, maximum 300mm site fall over the building platform, no existing fill. Slab costs will be adjusted if founding conditions differ.	
	Compaction report "site specific" is required or else other cost incurred.	
	Based on land size up to 600m <sup>2</sup> , and a maximum building setback of 6m (subject to planning authority).	
	Engineer design surface drainage, including silt pits with grated covers, connected to stormwater, (2 No) flexible couplings to sewer, engineer design and certification.	
	Rock removal is included, however any rock requiring explosives or core drilling will be an additional charge.	
<b>Connections</b>	Underground electricity, gas, sewer and storm water included.	
	Telephone conduit and draw cable from the supply pit.	
	Telephone and electricity fees by owner.	
	NBN ready.	
<b>External Features</b>	<b>Bricks</b>	Clay brick selection from Hattan colour scheme.
	<b>Render</b>	Acrylic texture coating render. Colour to be selected from Hattan colour scheme.
	<b>Tile feature Option</b>	300 x 600mm Horizontal lay to front façade. Colour to be selected from Hattan colour scheme.
	<b>Infills Over Windows</b>	Front Elevation – Brick light weight (façade design dependent). Side and rear Elevations – Brick infill over windows and doors.
	<b>Roof Cover</b>	Concrete Roof Tiles to be selected from colour selection.
	<b>Roof Plumbing</b>	Metal gutter, fascia and flashings to be Colorbond finish.
	<b>Roof Pitch</b>	22.5 degree.
	<b>Front Entry Door</b>	Stain colour to be selected from Hattan colour scheme.
	<b>Laundry Door</b>	Design specific openable door – as per design on drawings.
	<b>Windows</b>	Powder coated aluminum awning windows or timber to front façade only (façade design dependent).  Powder coated aluminum sliding windows to side and rear elevations only.
	<b>Sliding Doors</b>	Aluminum powder coated sliding door. Colour to be selected from Hattan colour scheme.  Locks to all windows and sliding doors keyed alike.
<b>Framing</b>	<b>Walls</b>	Stabilised timber frame throughout at 450mm centres to ground floor of double storey homes, 600mm centres to single storey homes and first floor of double storey homes. Timber Sizes to be in accordance with AS1684 Timber Framing Code.
	<b>Roof</b>	Engineer designed stabilised timber roof trusses at 600mm centre.
<b>Insulation</b>	Insulation batts to home to comply with 6 Star Energy Rating.	
<b>Internal Features</b>	<b>Ceiling Height</b>	2590mm ceiling height (nominal) to single storey with 75mm cove cornice. 2590mm ceiling height (nominal) to ground floor of double storey homes, 2440mm ceiling height (nominal) to first floor, 75mm cove cornice throughout.
	<b>Room Doors</b>	Flush panel Honeycomb Core 2040mm high to single storey, 2040mm high to ground floor and first floor of double storey.
	<b>Room Door Furniture</b>	Passage set. Provide Alba Chrome levers through Chrome finish.
	<b>Mouldings</b>	Skirtings – 67x18mm square edge primed MDF. Architraves – 67x18mm square edge primed MDF.
	<b>Plaster</b>	Ceiling Plaster. 10mm plasterboard finish.
	<b>Wall Plaster</b>	Plasterboard 10mm thick. Water resistant plasterboard to Ensuite, Bathroom and above Laundry trough.
	<b>Blinds</b>	Holland blinds to bedrooms and living areas.
	<b>Fly Wire</b>	Fly wire screens to all openable windows.
<b>Paint</b>	<b>Internal &amp; External</b>	Two coats.
	<b>Woodwork &amp; Skirting</b>	Two coats.
<b>Heating &amp; Cooling</b>	Gas ducted heating unit installed in roof space with digital thermostat and ducted to living areas and bedrooms (excludes wet areas) as per manufacturers/suppliers recommendations for home size.  Reverse cycle split system (heating and cooling) to living.	
<b>Hot Water System</b>	Hot water unit in accordance with estate design guidelines.	

<b>Kitchen</b>	European inspired oven 600mm.		
	European inspired cooktop 900mm 5 burner stainless steel gas cooktop.		
	European inspired rangehood 900mm stainless steel canopy rangehood.		
	European inspired dishwasher 600mm.		
	<b>Sink:</b> Stainless steel double bowl sink.		
	<b>Tap:</b> Mixer gooseneck in chrome finish.		
	<b>Bench Top:</b> Engineered stone benchtop 20mm. Choose colour from Hattan colour scheme.		
<b>Splashback:</b> Premium Splashback. Choose colour from Hattan colour scheme.			
<b>Bathroom, Ensuite, Powder Room &amp; WC</b>	<b>Mirror</b>	Polished edges to full width of vanities sitting on 200mm tile splashback.	
	<b>Basin</b>	Ceramic above mount basin (white). Chrome waste 1 tap hole/overflow.	
	<b>Vanity Unit</b>	Laminate finish vanity unit – as per design on drawings..	
	<b>Bench Top</b>	Engineered stone benchtop 20mm. Choose colour from Hattan colour scheme.	
	<b>Bath</b>	1525/1675mm acrylic bath (white) in tiled podium. (Design Specific)	
	<b>Shower Bases</b>	Ceramic tiled shower base. Selection from Hattan colour scheme range with Demtech grated drain system.	
	<b>Shower Screens</b>	1950mm high semi frameless with pivot door and clear laminated glass.	
	<b>Taps and Outlets</b>	Ensuite Shower hand shower on rail.	
		Bathroom Shower – Shower hand shower on rail.	
		Bath (Wall Mounted) – Straight wall bath outlet and wall mixer.	
		Basin (Wall Mounted) – Wall mixer.	
<b>Accessories</b>	Toilet roll holders chrome, double towel rails and soap dish holders to showers.		
<b>Toilet Suite</b>	China toilet suite in white with soft close seat.		
<b>Laundry</b>	<b>Trough</b>	45 litre single inset bowl stainless steel without top bypass.	
	<b>Base Cupboard</b>	800mm wide fully lined modular cabinet, refer to working drawings.	
	<b>Bench Top</b>	Laminate with square edge.	
	<b>Tapware</b>	Sink mixer in chrome finish.	
<b>Electrical</b>	<b>Internal Light Points</b>	Recessed LED downlight in white non-metallic polyamide housing with diffuser.	
	<b>External Light Points</b>	Flood light wall mounted light fitting – as per design on drawings.	
	<b>Power Points</b>	White surround, double power points throughout excluding dishwasher, microwave and refrigerator provision.	
	<b>Smoke Detector</b>	Hardwired with battery backup.	
	<b>Exhaust Fans</b>	Above all showers and toilet not opening to outside air, 250mm with self-sealing air flow draft stoppers.	
	<b>TV Points</b>	To Family and Master Bedroom.	
	<b>Telephone Point</b>	To Kitchen and Master Bedroom.	
	<b>Safety Switch</b>	Residual Current Devices safety switch and circuit breakers to meter box.	
	<b>Alarm</b>	Reliance 8 with 3 sensors keypad at entrance.	
<b>Plumbing</b>	(2 No) garden taps. One located at front and one at rear of dwelling.		
<b>Tiling</b>	<b>Ceramic Floor Tiles</b>	Selected from Hattan colour scheme 400x400mm to Laundry, Ensuite, Bathroom, WC, and Powder room.	
	<b>Ceramic Wall Tiles</b>	Selected from Hattan colour scheme 400x400mm to Laundry, Ensuite, Bathroom, WC, Powder room, shower recesses and above bath.	
<b>Floor Coverings</b>	<b>Carpet</b>	Selected from Hattan colour scheme to Bedrooms, WIR, Lounge, Study, Activity and Staircase.	
	<b>Timber Laminate</b>	Selected from Hattan colour scheme timber look laminate flooring to Entry, Kitchen, WIP, Meals, Family and rear hallway.	





<b>Storage</b>	<b>Shelving</b>	Robes – One white melamine shelf and hanging rail.
		Walk in Robe – One white melamine shelf and hanging rail.
		Pantry/Linen – Four white melamine shelves.
		Broom – One white melamine shelf.
	<b>Robe Doors</b>	Single Storey – 2040mm high flush panel hinged doors.
		Double Storey – 2040mm high flush panel hinged doors.
<b>Stairs (Double Storey Homes)</b>		Pine handrail, painted gloss finish, stainless steel rod balusters, MDF stringer, pine newel post, gloss painted finished. MDF treads and risers including plaster dwarf walls to stairs and void areas (refer for staircase layout).
<b>Garage</b>	<b>Garage Door</b>	Colorbond sectional door in flat line profile.
	<b>Remote Control</b>	Remote control unit to front garage door with 2 handsets.
		Door Frame – Aluminium frame and sill with sealer undercoat and low sheen acrylic top coats paint finish.
		Door – 2040mm high weatherproof flush panel with sealer undercoat and low sheen acrylic top coats paint finish, opening in.
		Door Furniture – Schlage Alba Chrome Levers through Chrome finish.
		Internal Access Door (Home Specific): Door Frame – Timber with sealer undercoat and low sheen acrylic top coats paint finish including full perimeter draft seals.
	<b>Pedestrian Door (Home Specific)</b>	Door – 2040mm high flush panel with sealer undercoat and low sheen acrylic top coats paint finish, opening into home.
		Door Furniture – Chrome Levers through Chrome finish.
<b>Outdoor</b>	<b>Landscaping</b>	Garden and plants to the front and rear. Instant turf to rear yard. Or as per landscape design on drawings.
	<b>Fencing</b>	1800mm high timber paling/Colorbond including wing fence and gate to suit estate design covenants.
	<b>Paving</b>	Coloured concrete to driveway, front path and rear outdoor living.
	<b>Letterbox</b>	Pre cast concrete letterbox with colour to match house.
	<b>Clothesline</b>	Colorbond fold out clothesline in rear yard.
<b>About us</b>		Member of Master Builders Association & Housing Industry of Australia.
		10-year structural guarantee.
		SOHO Living reserves the right to amend specification without prior notice. Products may vary depending on availability. Imagery for illustrative purposes.



5 Kitchen & Bathroom Cabinets 'Nocturne Oak'

1 Mirror Glass Splashback

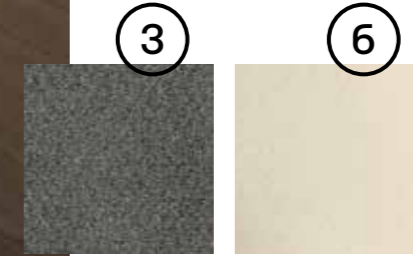
7 Paint 'Floral White'

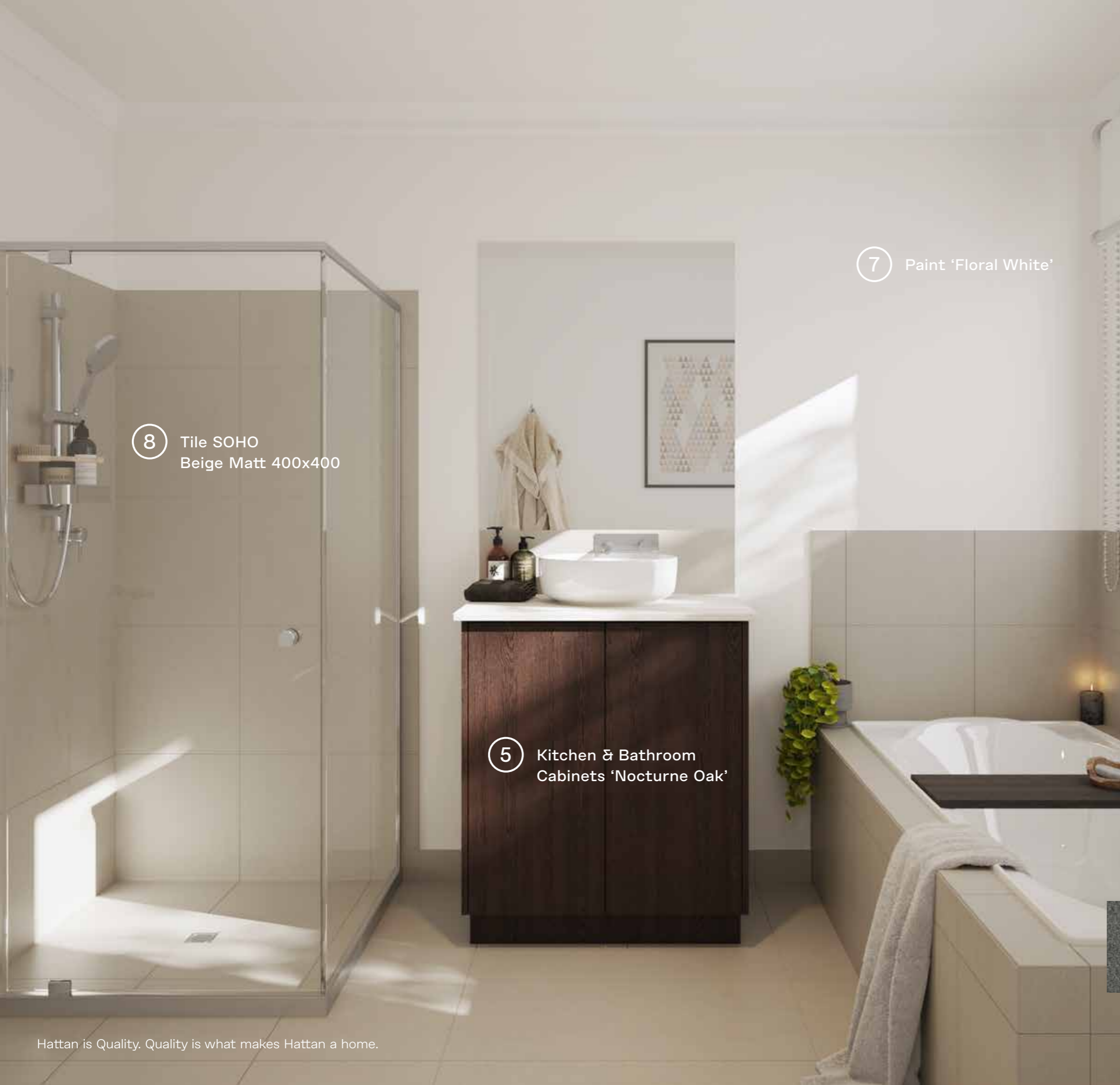
2 Kitchen Caesarstone Bench Top 'Osprey'

4 Laminate Floor 'Rye'

# Kitchen Colour Scheme 01

- 1 Mirror Glass Splashback
- 2 Kitchen Caesarstone Bench Top 'Osprey'
- 3 Carpet Rumble 'Pebble Stone'
- 4 Laminate Floor 'Rye'
- 5 Kitchen Cabinets & Bathroom 'Nocturne Oak'
- 6 Laundry Bench Top 'Platinum Micro'
- 7 Paint 'Floral White'
- 8 Tile SOHO Beige Matt 400x400





8 Tile SOHO  
Beige Matt 400x400

7 Paint 'Floral White'

5 Kitchen & Bathroom  
Cabinets 'Nocturne Oak'

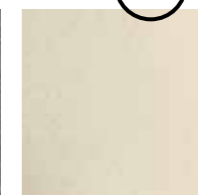
## Bathroom Colour Scheme 01

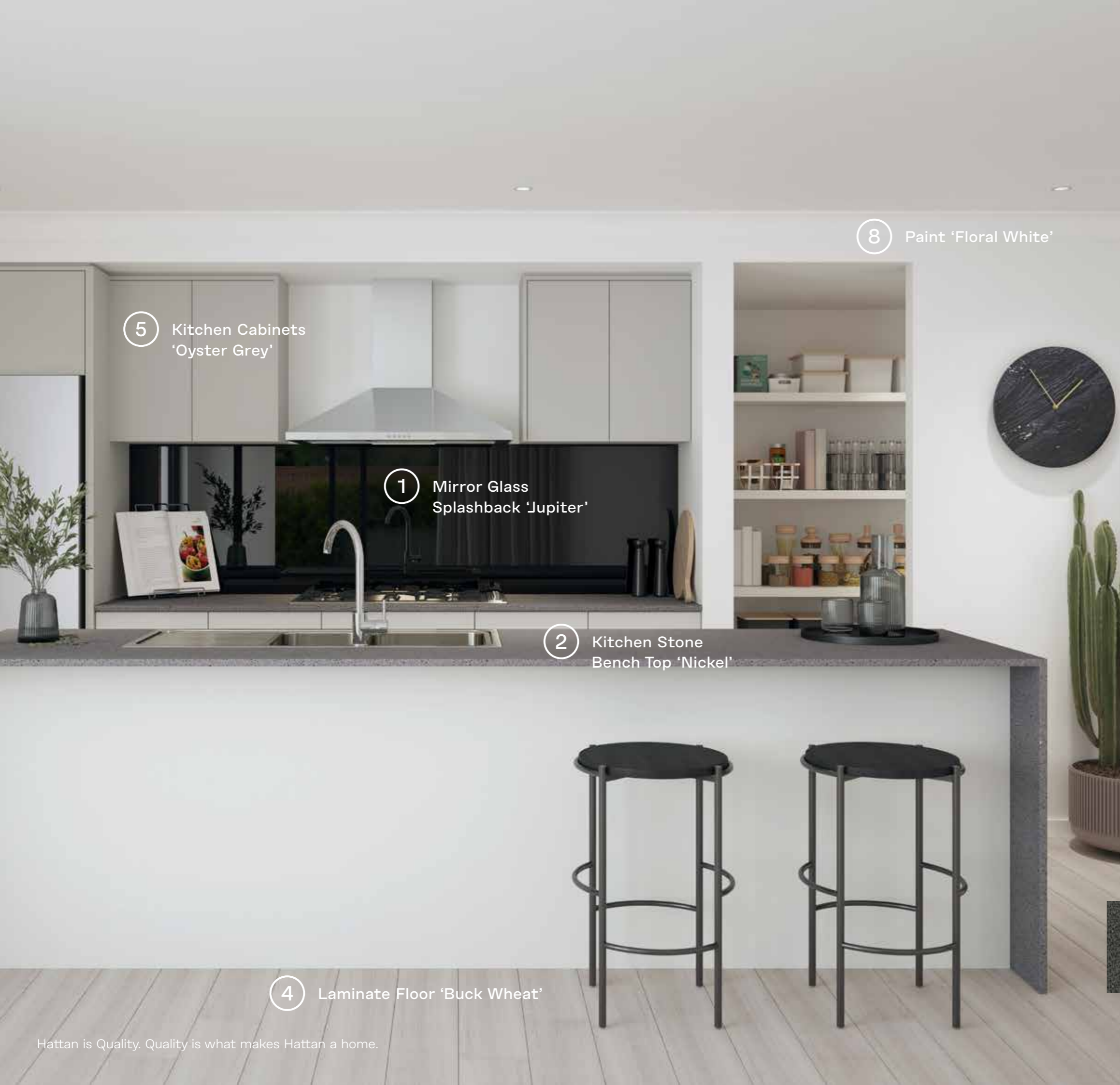
- 1 Mirror Glass Splashback
- 2 Kitchen Caesarstone Bench Top 'Osprey'
- 3 Carpet Rumble 'Pebble Stone'
- 4 Laminate Floor 'Rye'
- 5 Kitchen Cabinets & Bathroom 'Nocturne Oak'
- 6 Laundry Bench Top 'Platinum Micro'
- 7 Paint 'Floral White'
- 8 Tile SOHO Beige Matt 400x400

3



6





5 Kitchen Cabinets  
'Oyster Grey'

1 Mirror Glass  
Splashback 'Jupiter'

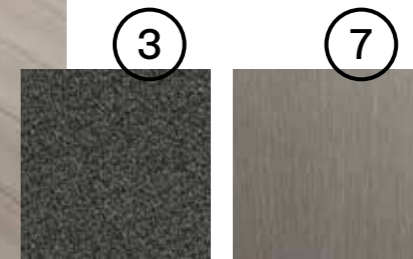
2 Kitchen Stone  
Bench Top 'Nickel'

8 Paint 'Floral White'

4 Laminate Floor 'Buck Wheat'

# Kitchen Colour Scheme 02

- 1 Mirror Glass Splashback 'Jupiter'
- 2 Kitchen Stone Bench Top 'Nickel'
- 3 Carpet Rumble 'Pivot Grey'
- 4 Laminate Floor 'Buck Wheat'
- 5 Kitchen Cabinets 'Oyster Grey'
- 6 Bathroom Cabinet 'Idyllic'
- 7 Laundry Bench Top 'New Graphite'
- 8 Paint 'Floral White'
- 9 Tile SOHO Charcoal Matt 400x400







9 Tile SOHO  
Charcoal Matt 400x400

8 Paint 'Floral White'

6 Bathroom Cabinet  
'Idyllic'

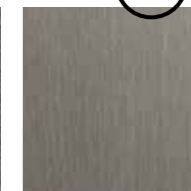
## Bathroom Colour Scheme 02

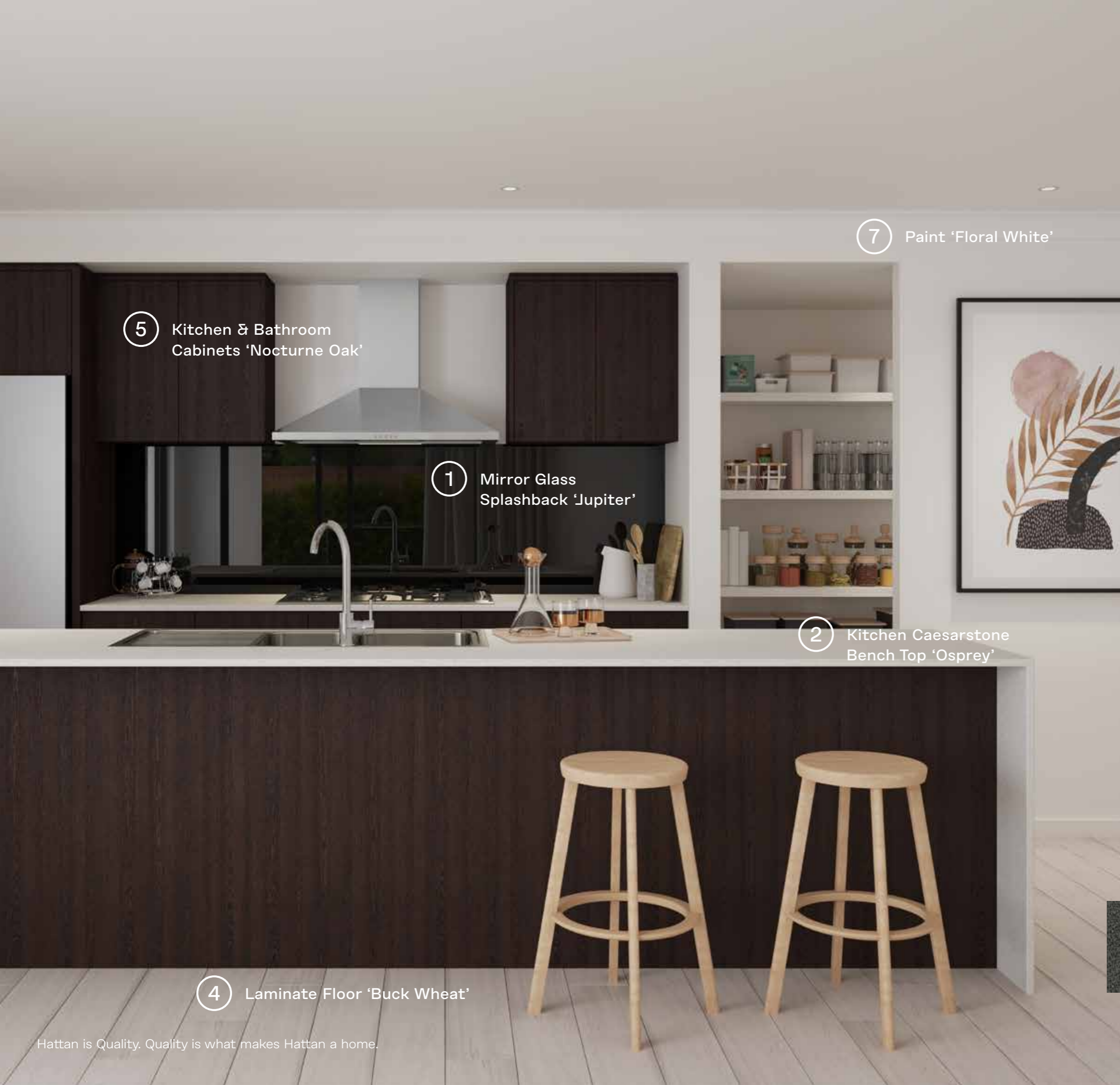
- 1 Mirror Glass Splashback 'Jupiter'
- 2 Kitchen Stone Bench Top 'Nickel'
- 3 Carpet Rumble 'Pivot Grey'
- 4 Laminate Floor 'Buck Wheat'
- 5 Kitchen Cabinets 'Oyster Grey'
- 6 Bathroom Cabinet 'Idyllic'
- 7 Laundry Bench Top 'New Graphite'
- 8 Paint 'Floral White'
- 9 Tile SOHO Charcoal Matt 400x400

3



7





5 Kitchen & Bathroom Cabinets 'Nocturne Oak'

1 Mirror Glass Splashback 'Jupiter'

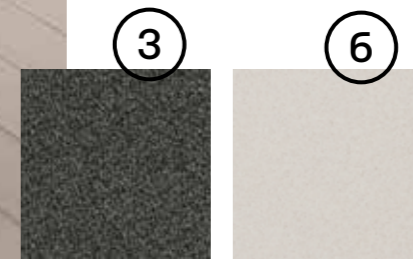
7 Paint 'Floral White'

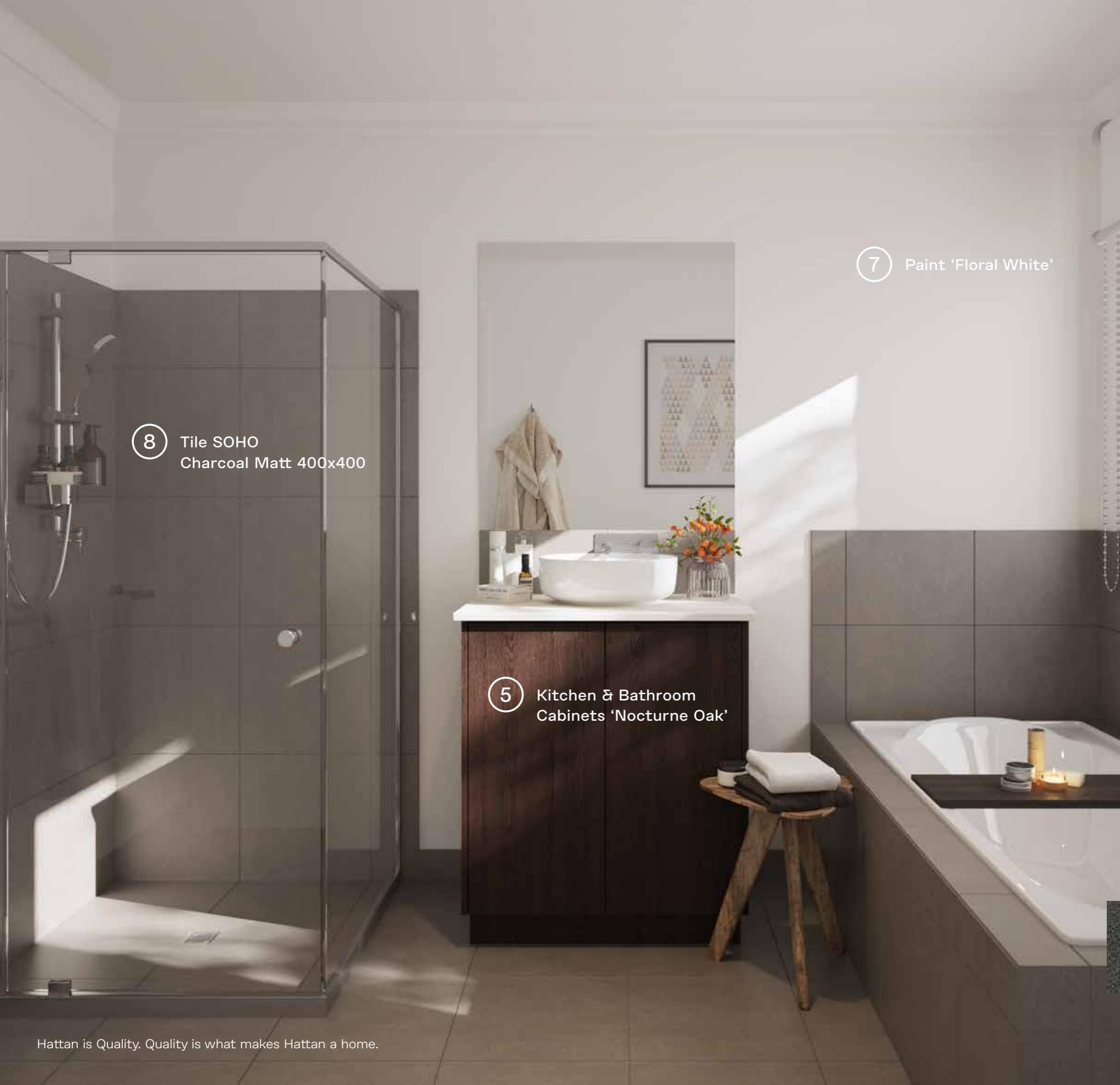
2 Kitchen Caesarstone Bench Top 'Osprey'

4 Laminate Floor 'Buck Wheat'

# Kitchen Colour Scheme 03

- 1 Mirror Glass Splashback 'Jupiter'
- 2 Kitchen Caesarstone Bench Top 'Osprey'
- 3 Carpet Rumble 'Pivot Grey'
- 4 Laminate Floor 'Buck Wheat'
- 5 Kitchen & Bathroom Cabinets 'Nocturne Oak'
- 6 Laundry Bench Top 'Platinum Micro'
- 7 Paint 'Floral White'
- 8 Tile SOHO Charcoal Matt 400x400





8 Tile SOHO  
Charcoal Matt 400x400

7 Paint 'Floral White'

5 Kitchen & Bathroom  
Cabinets 'Nocturne Oak'

## Bathroom Colour Scheme 03

- 1 Mirror Glass Splashback 'Jupiter'
- 2 Kitchen Caesarstone Bench Top 'Osprey'
- 3 Carpet Rumble 'Pivot Grey'
- 4 Laminate Floor 'Buck Wheat'
- 5 Kitchen & Bathroom Cabinets 'Nocturne Oak'
- 6 Laundry Bench Top 'Platinum Micro'
- 7 Paint 'Floral White'
- 8 Tile SOHO Charcoal Matt 400x400

3

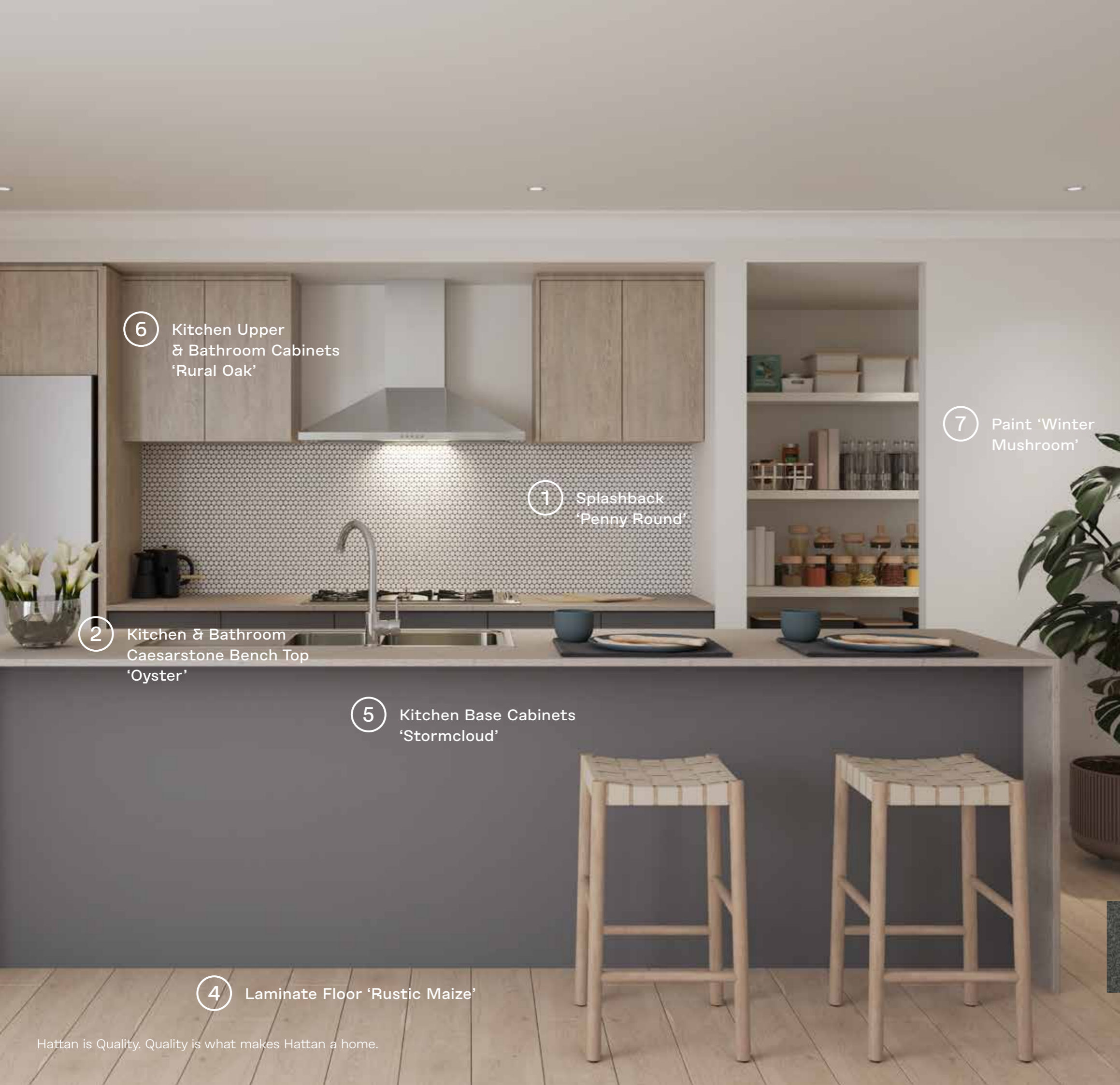
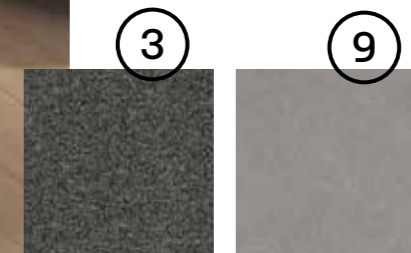
6



## Kitchen

# Colour Scheme 04

- 1 Splashback 'Penny Round'
- 2 Kitchen & Bathroom Caesarstone Bench Top 'Oyster'
- 3 Carpet Rumble 'Storm Cloud'
- 4 Laminate Floor 'Rustic Maize'
- 5 Kitchen Base Cabinets 'Stormcloud'
- 6 Kitchen Upper & Bathroom Cabinets 'Rural Oak'
- 7 Paint 'Winter Mushroom'
- 8 Tile Simplicity Dark Grey Natural 400 x 400
- 9 Laundry Bench Top 'Basalt'



6 Kitchen Upper & Bathroom Cabinets 'Rural Oak'

1 Splashback 'Penny Round'

7 Paint 'Winter Mushroom'

2 Kitchen & Bathroom Caesarstone Bench Top 'Oyster'

5 Kitchen Base Cabinets 'Stormcloud'

4 Laminate Floor 'Rustic Maize'



8 Tile Simplicity  
Dark Grey  
Natural 400x400

7 Paint 'Winter Mushroom'

2 Kitchen & Bathroom  
Caesarstone  
Bench Top 'Oyster'

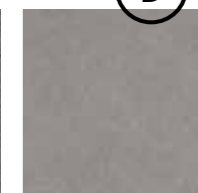
6 Kitchen Upper  
& Bathroom Cabinets  
'Rural Oak'

# Bathroom Colour Scheme 04

- 1 Splashback 'Penny Round'
- 2 Kitchen & Bathroom Caesarstone Bench Top 'Oyster'
- 3 Carpet Rumble 'Storm Cloud'
- 4 Laminate Floor 'Rustic Maize'
- 5 Kitchen Base Cabinets 'Stormcloud'
- 6 Kitchen Upper & Bathroom Cabinets 'Rural Oak'
- 7 Paint 'Winter Mushroom'
- 8 Tile Simplicity Dark Grey Natural 400 x 400
- 9 Laundry Bench Top 'Basalt'

3

9



## Kitchen

# Colour Scheme 05

- 1 Splashback Luc Statuario Lunensis
- 2 Kitchen & Bathroom Caesarstone Bench Top 'Snow'
- 3 Carpet Rumble 'Light Shadow'
- 4 Laminate Floor 'Rustic Oatmeal'
- 5 Kitchen Base Cabinets 'Calm White'
- 6 Kitchen Upper & Bathroom Cabinets 'Bleached Elm'
- 7 Paint 'Wattyl White'
- 8 Tile Simplicity Sand Natural 400 x 400
- 9 Laundry Bench Top 'Fresh Snow'

3



9



6 Kitchen Upper & Bathroom Cabinets 'Bleached Elm'

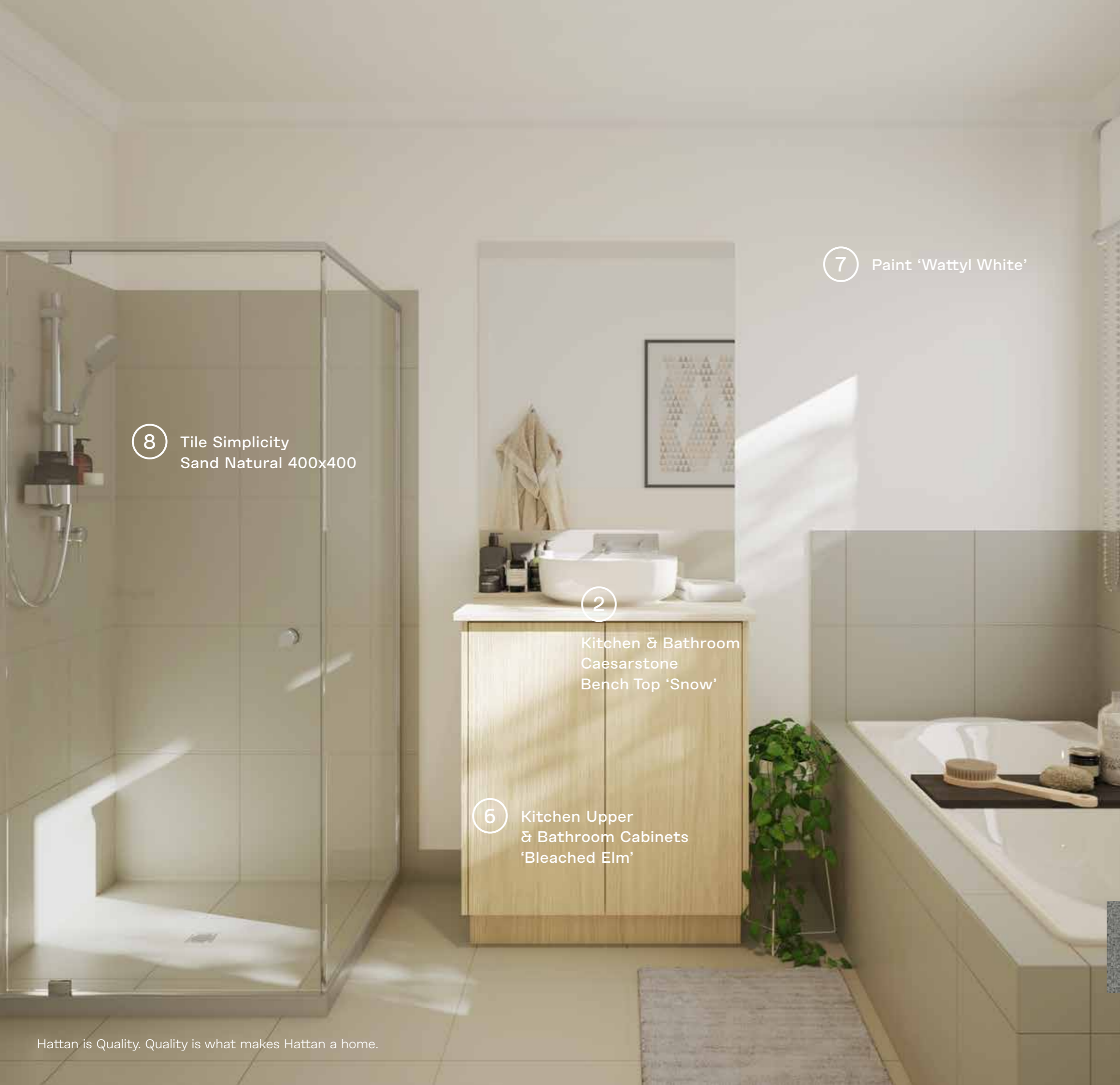
1 Splashback Luc Statuario Lunensis

7 Paint 'Wattyl White'

2 Kitchen & Bathroom Caesarstone Bench Top 'Snow'

5 Kitchen Base Cabinets 'Calm White'

4 Laminate Floor 'Rustic Oatmeal'



8 Tile Simplicity  
Sand Natural 400x400

7 Paint 'Wattyl White'

2 Kitchen & Bathroom  
Caesarstone  
Bench Top 'Snow'

6 Kitchen Upper  
& Bathroom Cabinets  
'Bleached Elm'

## Bathroom Colour Scheme 05

- 1 Splashback Luc Statuario Lunensis
- 2 Kitchen & Bathroom Caesarstone Bench Top 'Snow'
- 3 Carpet Rumble 'Light Shadow'
- 4 Laminate Floor 'Rustic Oatmeal'
- 5 Kitchen Base Cabinets 'Calm White'
- 6 Kitchen Upper & Bathroom Cabinets 'Bleached Elm'
- 7 Paint 'Wattyl White'
- 8 Tile Simplicity Sand Natural 400 x 400
- 9 Laundry Bench Top 'Fresh Snow'

3



9



## Kitchen

# Colour Scheme 06

- 1 Splashback 'Calacatta Gold'
- 2 Kitchen & Bathroom Caesarstone Bench Top 'Sleek Concrete'
- 3 Carpet 'Storm Cloud'
- 4 Laminate Floor 'Rye Matt'
- 5 Kitchen Base Cabinets 'Calm White'
- 6 Kitchen & Bathroom Cabinets 'Calm White'
- 7 Paint 'Designer White'
- 8 Tile 'Simplicity Dark Grey' 400 x 400
- 9 Laundry Bench Top 'Fresh Snow'

3



9



6 Kitchen & Bathroom Cabinets 'Calm White'

1 Splashback 'Calacatta Gold'

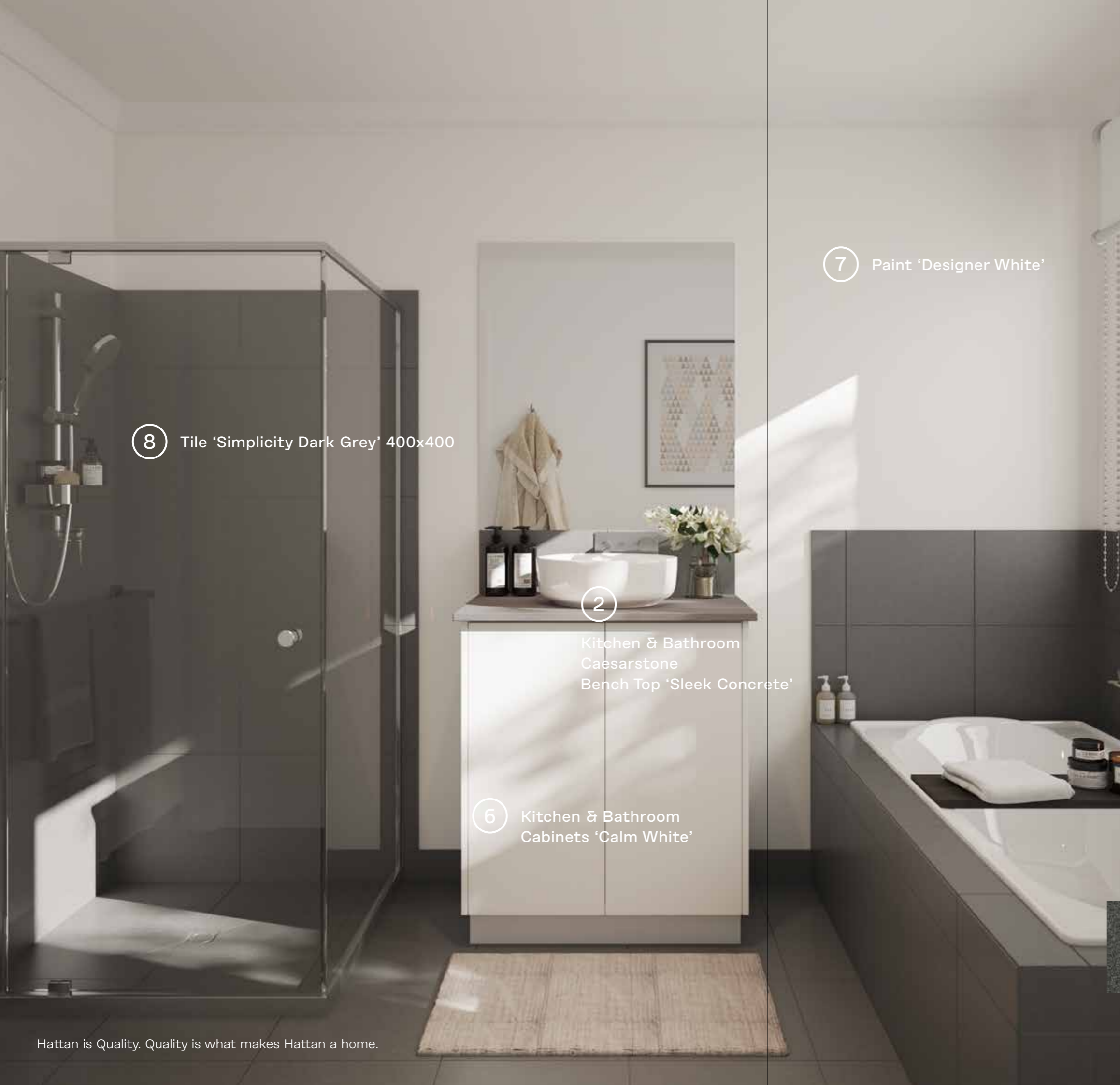
7 Paint 'Designer White'

2 Kitchen & Bathroom Caesarstone Bench Top 'Sleek Concrete'

5 Kitchen Base Cabinets 'Calm White'

4 Laminate Floor 'Rye Matt'





8 Tile 'Simplicity Dark Grey' 400x400

7 Paint 'Designer White'

2 Kitchen & Bathroom  
Caesarstone  
Bench Top 'Sleek Concrete'

6 Kitchen & Bathroom  
Cabinets 'Calm White'

# Bathroom Colour Scheme 06

- 1 Splashback 'Calacatta Gold'
- 2 Kitchen & Bathroom Caesarstone Bench Top 'Sleek Concrete'
- 3 Carpet 'Storm Cloud'
- 4 Laminate Floor 'Rye Matt'
- 5 Kitchen Base Cabinets 'Calm White'
- 6 Kitchen & Bathroom Cabinets 'Calm White'
- 7 Paint 'Designer White'
- 8 Tile 'Simplicity Dark Grey' 400 x 400
- 9 Laundry Bench Top 'Fresh Snow'

3

9



YOUR

# Buying Process

PAY INITIAL DEPOSIT



SIGN HIA CONTRACT & PAY 5% DEPOSIT



FORMAL FINANCE & LAND SETTLEMENT



READY TO START!



CHOOSE ONE OF 5 INTERNAL



LAND TITLES



BUILDING PERMIT & COMMENCE



14 DAYS

3 MONTHS

# YOUR Build Process

PRE SITE  
INTRODUCTION



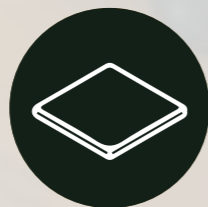
FRAME  
STAGE



COMPLETION



SLAB  
STAGE



LOCK UP & FIX  
STAGE



KEY HAND OVER



\*Please refer to your contract  
for specific details

A man and a woman are sitting on a light-colored, modern sofa in a living room. The man is wearing a dark blue shirt and khaki pants, and the woman is wearing a striped shirt and blue jeans. They are both smiling and looking at each other. The sofa has several large, light-colored pillows. In the background, there is a wooden bookshelf with books and decorative items, and a white wall. The overall atmosphere is warm and cozy.

Hattan is quality. Quality is what makes Hattan a home.

Hattan

Hattan is quality.  
Quality is what makes Hattan a home.

# Hattan

[hattan.com.au](http://hattan.com.au)

All images are protected by copyright and are owned by Hattan Australia. The building practitioner is by Soho Living Australia Pty Ltd trading as Hattan, registration number CDB-U50036. Images and photographs contained within this brochure should be used as a guide and depicts an artist impression for illustrative purposes only. They may depict fixtures finishes features furnishings and landscaping not supplied by Hattan, please ask your Agent for detailed home design specific drawings for full extent of inclusions, features, pricing and specifications of your preferred Hattan home design colour scheme and or façade. All information contained within this brochure is accurate at time of 8/12/2022.