

REALISED BY LENDLEASE

COLLINS

MELBOURNE

WHARF

ANCORA

REALISED BY LENDLEASE

VISION



**MELBOURNE'S
WATERFRONT MEETS
COLLINS STREET**

Step into Collins Wharf by Lendlease – an exclusive waterfront neighbourhood where Melbourne's most illustrious street converges with the tranquillity of the water.



Artist impression only. Subject to planning. Design subject to change. View lines, fixtures and finishes may differ from that shown.

Collins Wharf is a unique dual-waterfront locale boasting breathtaking panoramas and seamless connectivity to the best of city living – all within one of Melbourne's most esteemed enclaves.

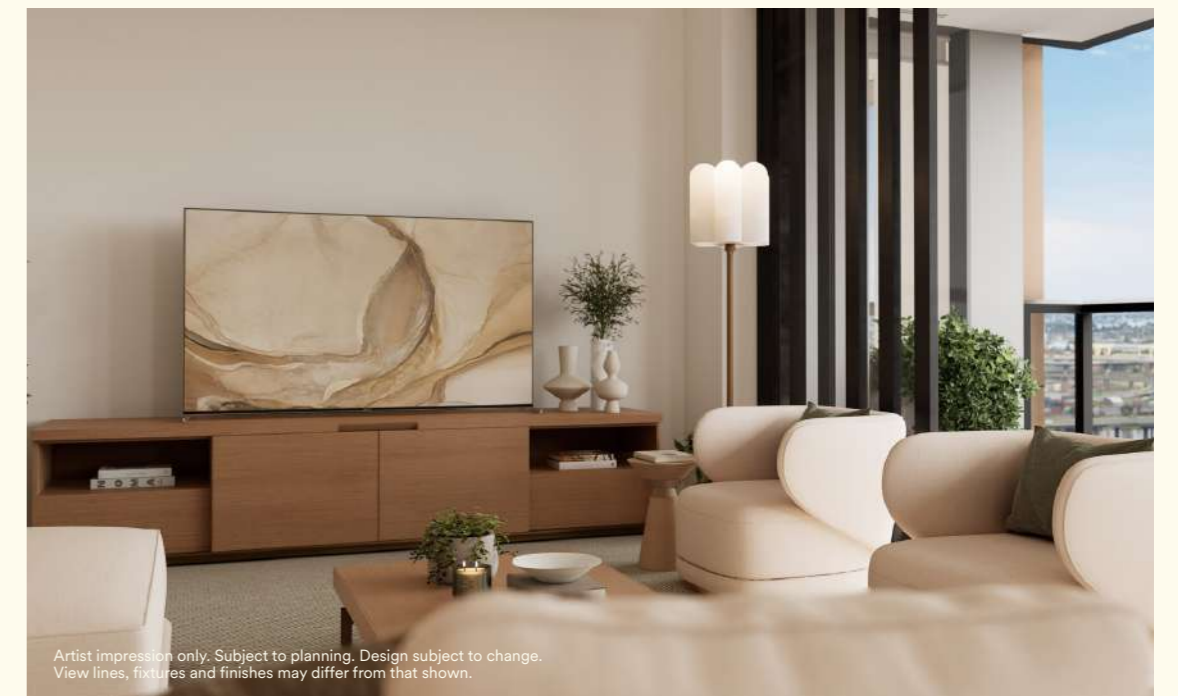


Artist impression only. Subject to planning. Design subject to change.
View lines, fixtures and finishes may differ from that shown.

COME HOME TO COLLINS WHARF

Herald in a new era for Collins Wharf - where the very heartbeat of Melbourne converges with luxury waterfront living.

Ancora at Collins Wharf presents a rare chance to join this thriving neighbourhood. With postcard views of Melbourne's iconic Yarra River, Victoria Harbour and swooping views of the city, indulge in tranquil waterfront living, moments from the vibrant pulse of Melbourne's cultural hub.

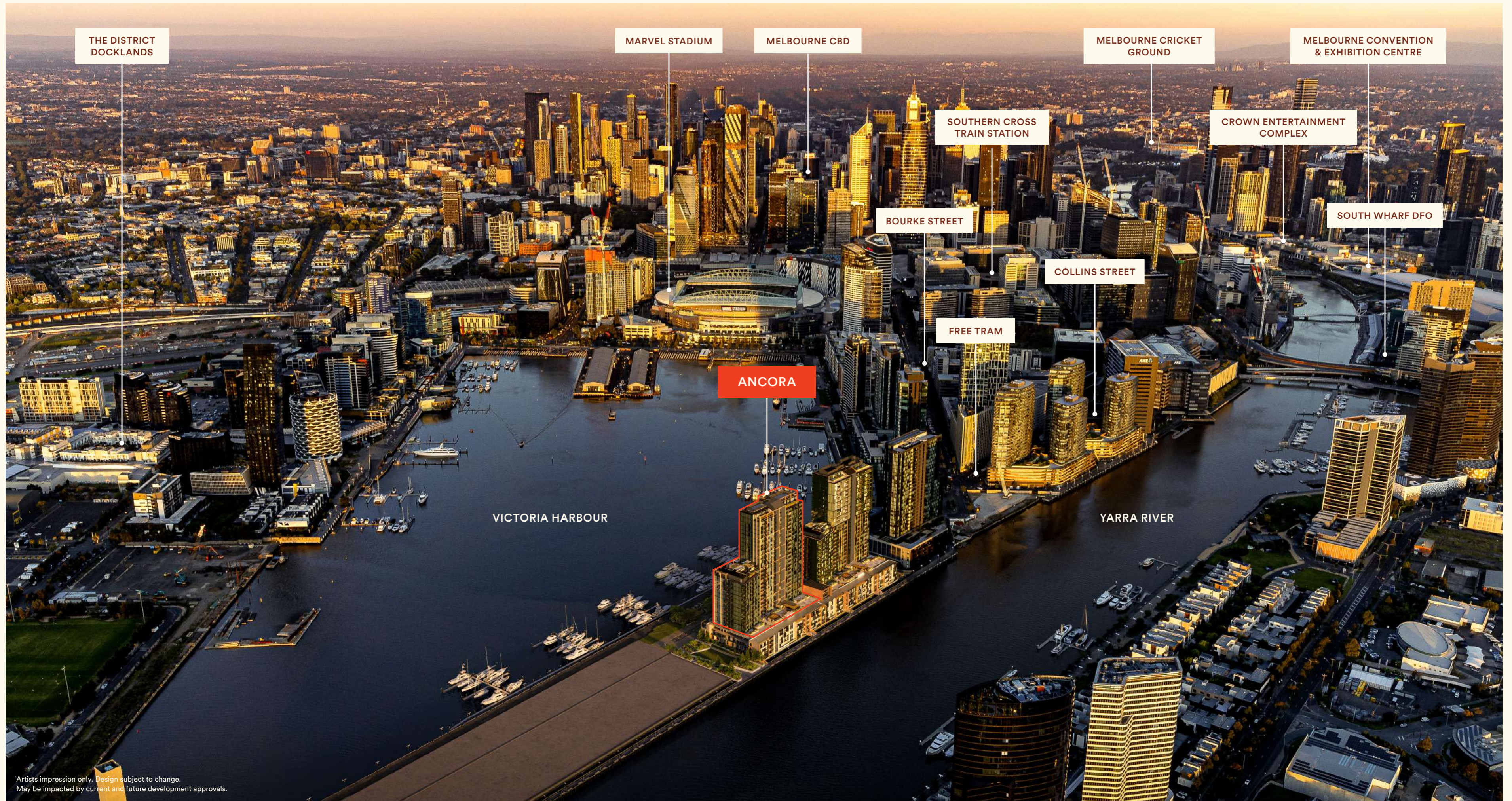


Artist impression only. Subject to planning. Design subject to change.
View lines, fixtures and finishes may differ from that shown.

REALISED BY LENDLEASE

LOCATION





THE DISTRICT DOCKLANDS

MARVEL STADIUM

MELBOURNE CBD

MELBOURNE CRICKET GROUND

MELBOURNE CONVENTION & EXHIBITION CENTRE

SOUTHERN CROSS TRAIN STATION

CROWN ENTERTAINMENT COMPLEX

BOURKE STREET

SOUTH WHARF DFO

COLLINS STREET

FREE TRAM

ANCORA

VICTORIA HARBOUR

YARRA RIVER

**YOUR RENOWNED ADDRESS
ON COLLINS STREET**

- 01. CROWN ENTERTAINMENT COMPLEX

- 02. ARTS CENTRE MELBOURNE

- 03. EMPORIUM

- 04. FLINDERS STREET TRAIN STATION

- 05. CONVENTION & EXHIBITION CENTRE

- 06. NATIONAL GALLERY OF VICTORIA

- 07. THE UNIVERSITY OF MELBOURNE

- 08. LIBRARY AT THE DOCK

- 09. THE DISTRICT DOCKLANDS

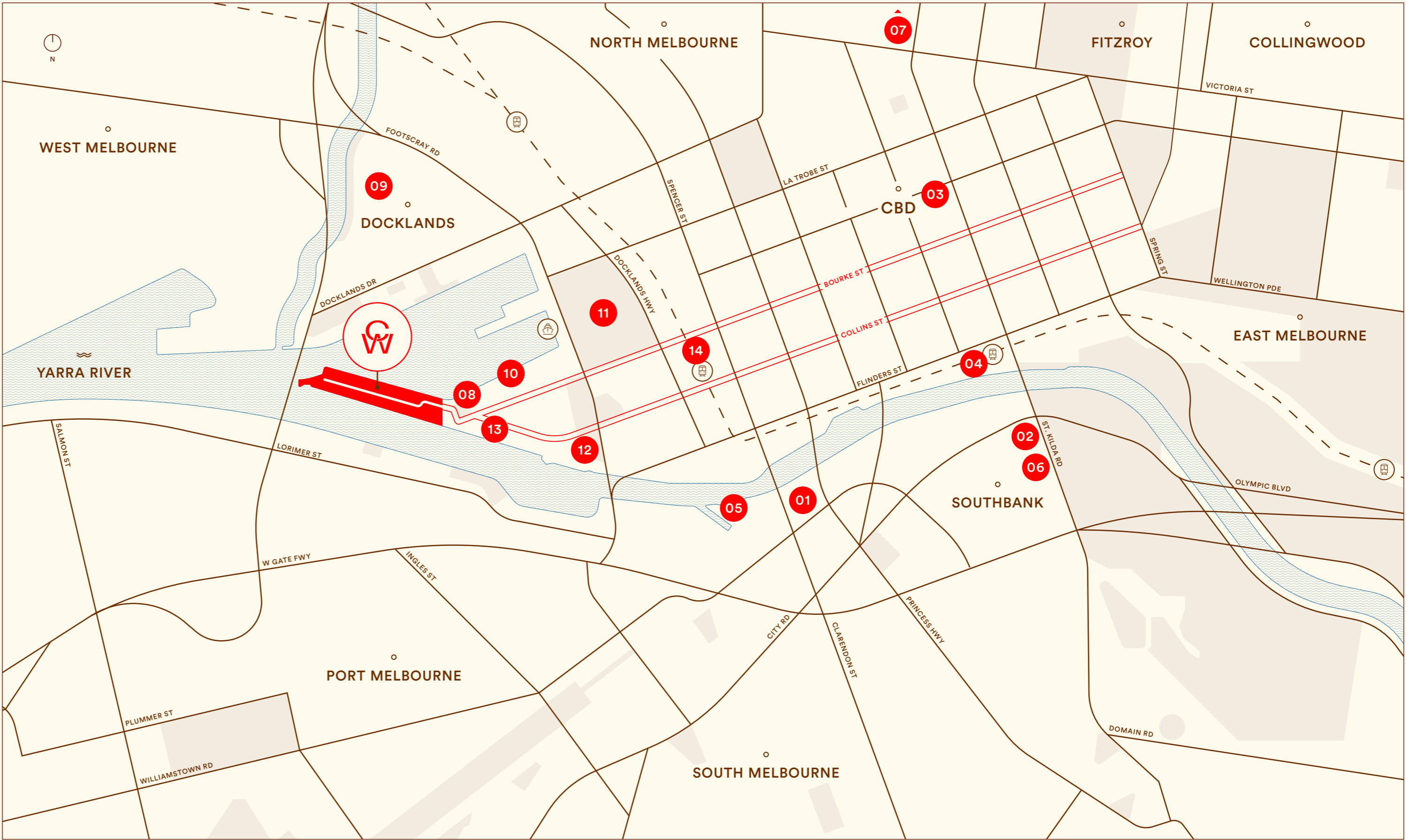
- 10. RIVER CRUISES

- 11. MARVEL STADIUM

- 12. DOCKLANDS PARK

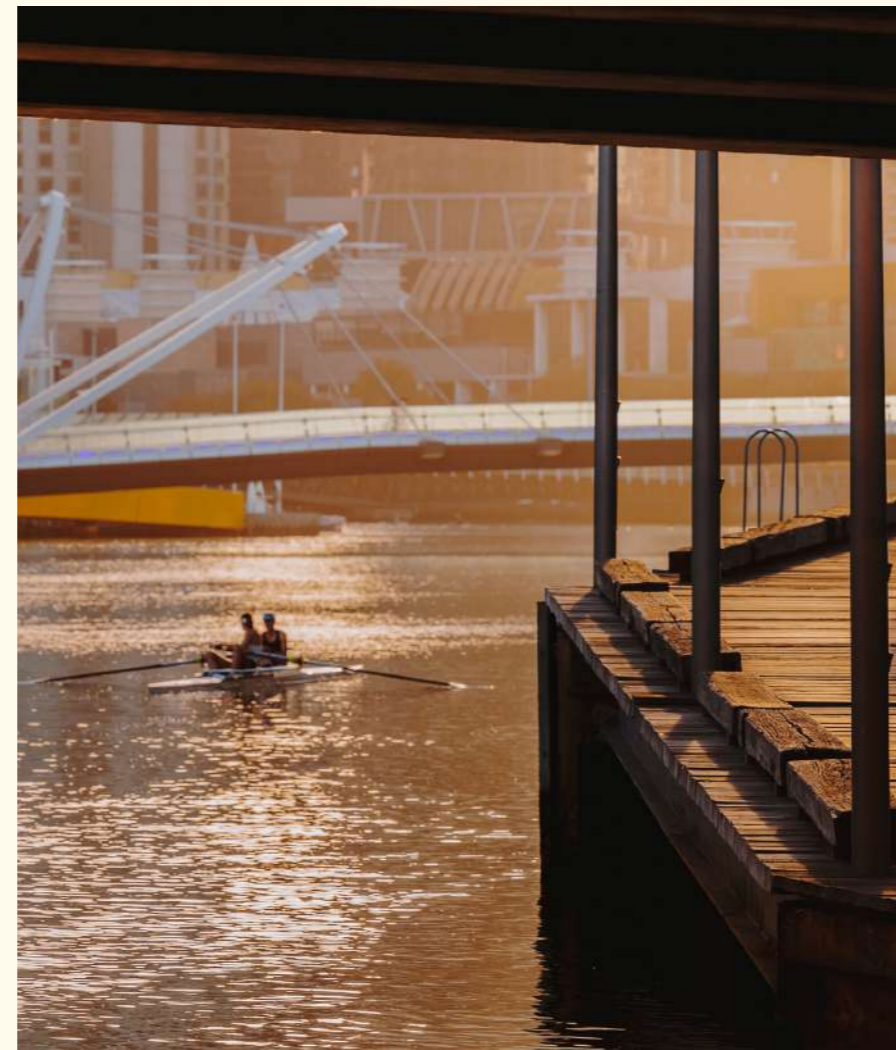
- 13. COLLINS STREET TRAM STOP

- 14. SOUTHERN CROSS TRAIN STATION



HOME TO THE YARRA

Radiating timeless elegance and quiet glamour, Collins Wharf provides the unique opportunity to live by the water and relish in the unrivalled energy of Melbourne.



From European-style streets and culinary laneways to artisanal providores and boutique retail, discover Melbourne's vibrant and cultural hub just moments from your tranquil waterfront home.

REALISED BY LENDLEASE

VIEWLINES





REALISED BY



View-line photograph captured December 2023 at approximately RL 4.6. Any view-lines shown are indicative only and subject to change. View lines may be impacted by building design changes and current and future planning approvals, including of surrounding developments. Prospective purchasers must make and rely on their own enquiries.



ANCORA
LEVEL G





REALISED BY

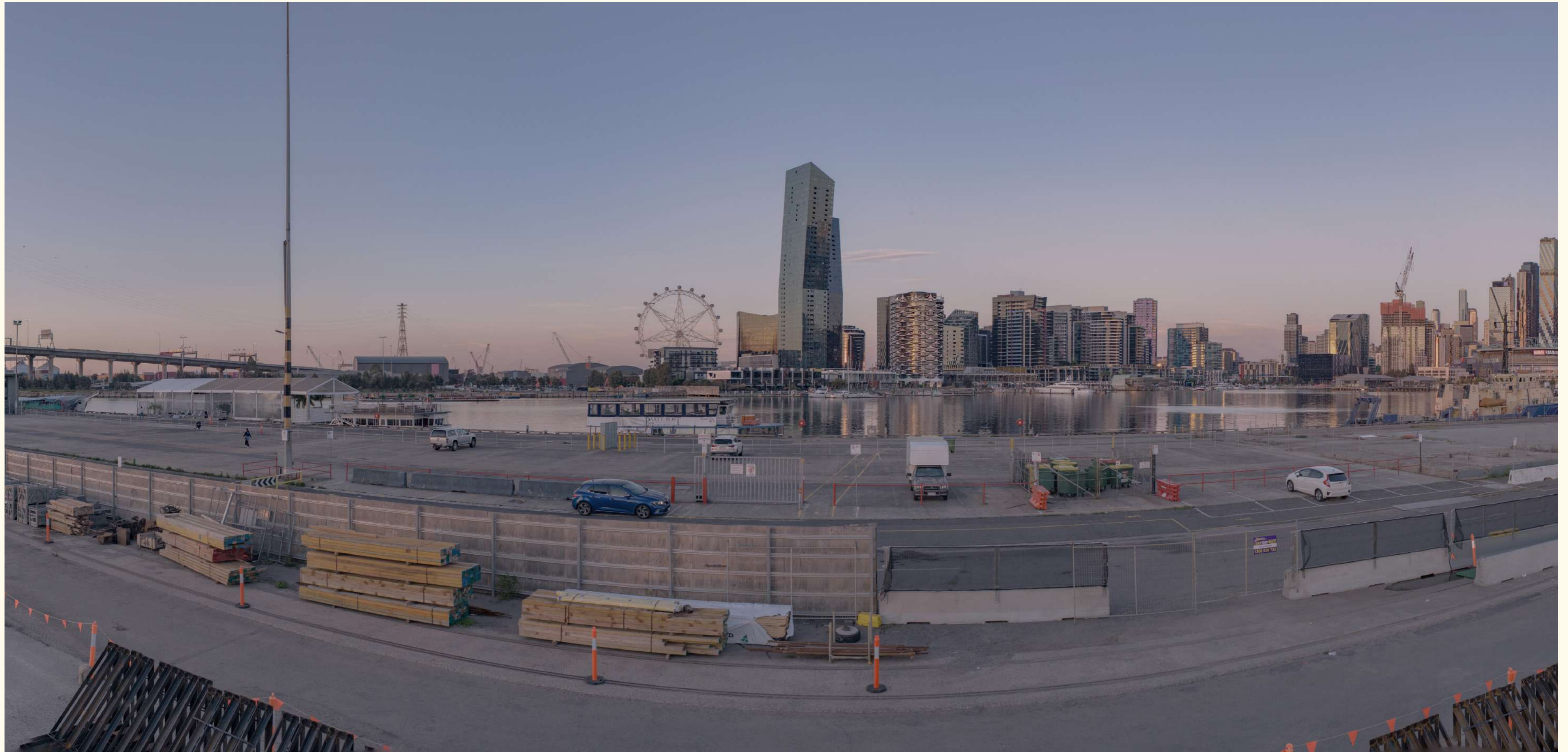


View-line photograph captured December 2023 at approximately RL 4.6. Any view-lines shown are indicative only and subject to change. View lines may be impacted by building design changes and current and future planning approvals, including of surrounding developments. Prospective purchasers must make and rely on their own enquiries.



ANCORA
LEVEL G





REALISED BY



View-line photograph captured December 2023 at approximately RL 4.6. Any view-lines shown are indicative only and subject to change. View lines may be impacted by building design changes and current and future planning approvals, including of surrounding developments. Prospective purchasers must make and rely on their own enquiries.



ANCORA
LEVEL G





REALISED BY

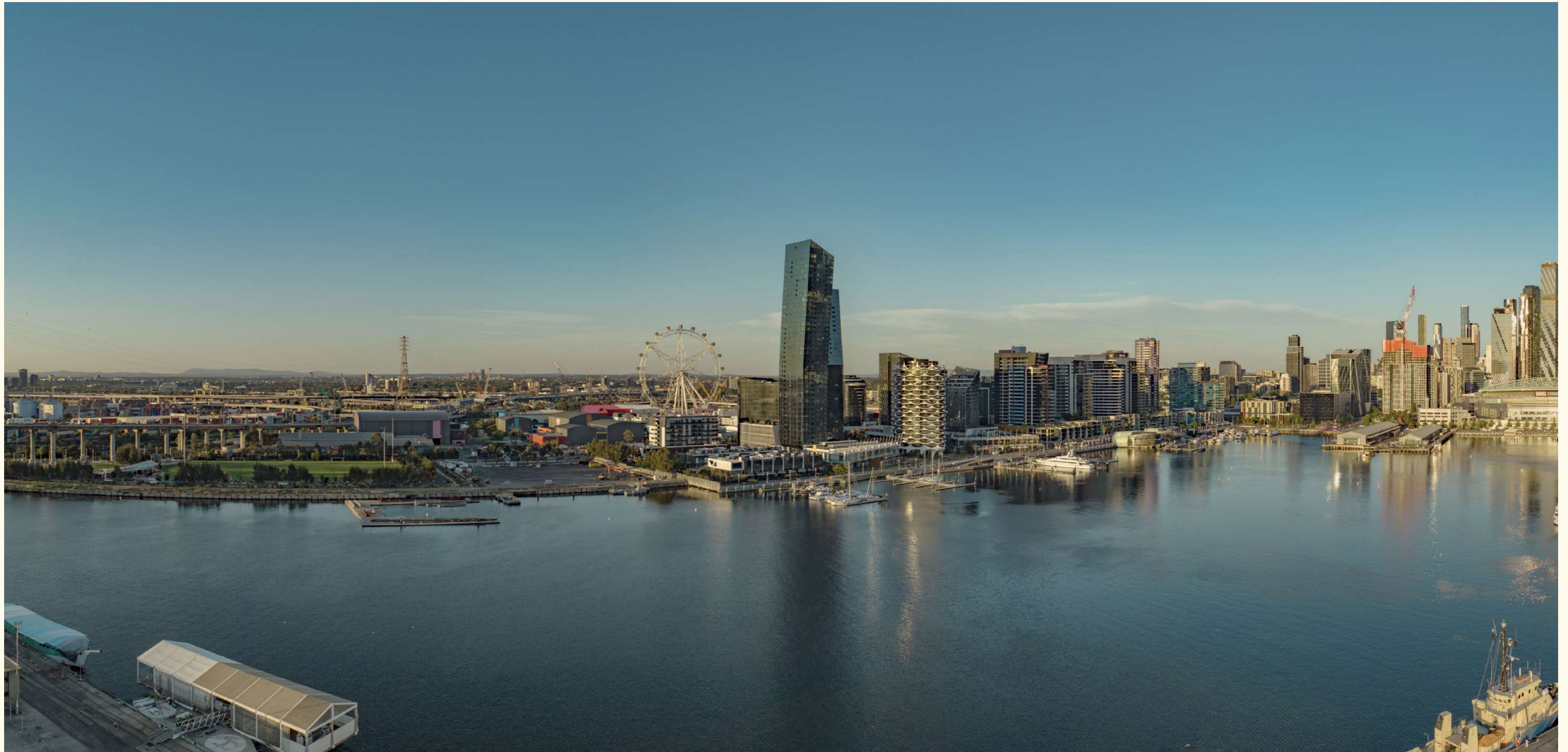


View-line photograph captured December 2023 at approximately RL 54.3. Any view-lines shown are indicative only and subject to change. View lines may be impacted by building design changes and current and future planning approvals, including of surrounding developments. Prospective purchasers must make and rely on their own enquiries.



ANCORA
LEVEL 16





REALISED BY



View-line photograph captured December 2023 at approximately RL 54.3. Any view-lines shown are indicative only and subject to change. View lines may be impacted by building design changes and current and future planning approvals, including of surrounding developments. Prospective purchasers must make and rely on their own enquiries.



**ANCORA
LEVEL 16**





REALISED BY



View-line photograph captured December 2023 at approximately RL 54.3. Any view-lines shown are indicative only and subject to change. View lines may be impacted by building design changes and current and future planning approvals, including of surrounding developments. Prospective purchasers must make and rely on their own enquiries.



ANCORA
LEVEL 16





REALISED BY



View-line photograph captured December 2023 at approximately RL 84.82. Any view-lines shown are indicative only and subject to change. View lines may be impacted by building design changes and current and future planning approvals, including of surrounding developments. Prospective purchasers must make and rely on their own enquiries.



ANCORA
LEVEL 26





REALISED BY



View-line photograph captured December 2023 at approximately RL 84.82. Any view-lines shown are indicative only and subject to change. View lines may be impacted by building design changes and current and future planning approvals, including of surrounding developments. Prospective purchasers must make and rely on their own enquiries.



ANCORA
LEVEL 26





REALISED BY



View-line photograph captured December 2023 at approximately RL 84.82. Any view-lines shown are indicative only and subject to change. View lines may be impacted by building design changes and current and future planning approvals, including of surrounding developments. Prospective purchasers must make and rely on their own enquiries.



ANCORA
LEVEL 26





REALISED BY



View-line photograph captured December 2023 at approximately RL 4.6. Any view-lines shown are indicative only and subject to change. View lines may be impacted by building design changes and current and future planning approvals, including of surrounding developments. Prospective purchasers must make and rely on their own enquiries.



ANCORA
LEVEL G





REALISED BY



View-line photograph captured December 2023 at approximately RL 4.6. Any view-lines shown are indicative only and subject to change. View lines may be impacted by building design changes and current and future planning approvals, including of surrounding developments. Prospective purchasers must make and rely on their own enquiries.



ANCORA
LEVEL G





REALISED BY



View-line photograph captured December 2023 at approximately RL 4.6. Any view-lines shown are indicative only and subject to change. View lines may be impacted by building design changes and current and future planning approvals, including of surrounding developments. Prospective purchasers must make and rely on their own enquiries.



ANCORA
LEVEL G





REALISED BY



View-line photograph captured December 2023 at approximately RL 54.3. Any view-lines shown are indicative only and subject to change. View lines may be impacted by building design changes and current and future planning approvals, including of surrounding developments. Prospective purchasers must make and rely on their own enquiries.



**ANCORA
LEVEL 16**





REALISED BY



View-line photograph captured December 2023 at approximately RL 54.3. Any view-lines shown are indicative only and subject to change. View lines may be impacted by building design changes and current and future planning approvals, including of surrounding developments. Prospective purchasers must make and rely on their own enquiries.



**ANCORA
LEVEL 16**





REALISED BY



View-line photograph captured December 2023 at approximately RL 54.3. Any view-lines shown are indicative only and subject to change. View lines may be impacted by building design changes and current and future planning approvals, including of surrounding developments. Prospective purchasers must make and rely on their own enquiries.



ANCORA
LEVEL 16





REALISED BY



View-line photograph captured December 2023 at approximately RL 84.82. Any view-lines shown are indicative only and subject to change. View lines may be impacted by building design changes and current and future planning approvals, including of surrounding developments. Prospective purchasers must make and rely on their own enquiries.



ANCORA
LEVEL 26





REALISED BY



View-line photograph captured December 2023 at approximately RL 84.82. Any view-lines shown are indicative only and subject to change. View lines may be impacted by building design changes and current and future planning approvals, including of surrounding developments. Prospective purchasers must make and rely on their own enquiries.



**ANCORA
LEVEL 26**





REALISED BY



View-line photograph captured December 2023 at approximately RL 84.82. Any view-lines shown are indicative only and subject to change. View lines may be impacted by building design changes and current and future planning approvals, including of surrounding developments. Prospective purchasers must make and rely on their own enquiries.



ANCORA
LEVEL 26



REALISED BY LENDLEASE

EXTERIOR



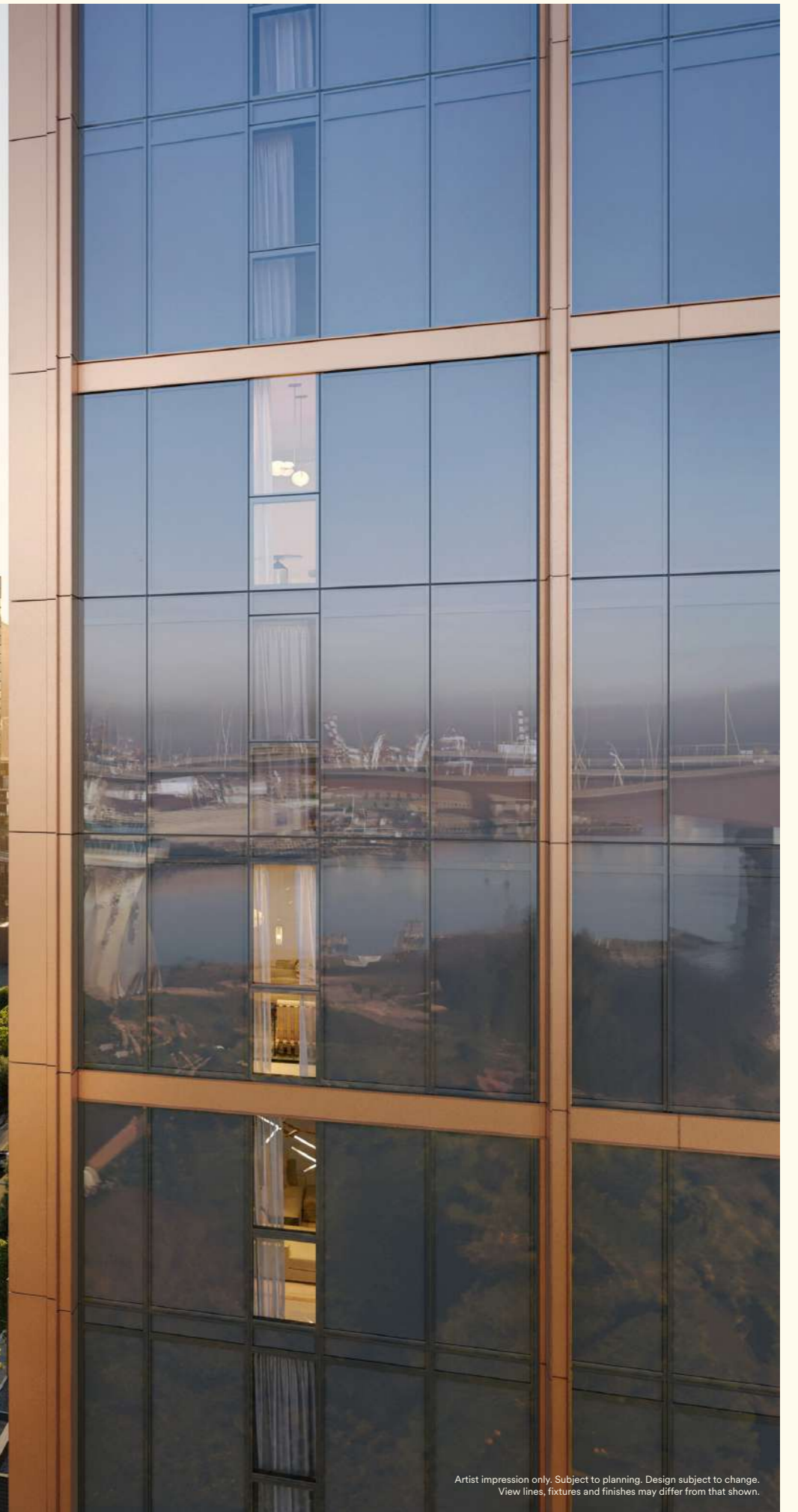


Artist impression only. Subject to planning. Design subject to change.
View lines, fixtures and finishes may differ from that shown.



Artist impression only. Subject to planning. Design subject to change.
View lines, fixtures and finishes may differ from that shown.





Artist impression only. Subject to planning. Design subject to change.
View lines, fixtures and finishes may differ from that shown.



Artist impression only. Subject to planning. Design subject to change.
View lines, fixtures and finishes may differ from that shown.

REALISED BY LENDLEASE

AMENITY



AN ELEVATED LIFESTYLE

01.

WATERFRONT PARKS & WALKWAYS

Unwind and take a stroll around the wharf and green spaces which provide all the benefits of waterfront living.

02.

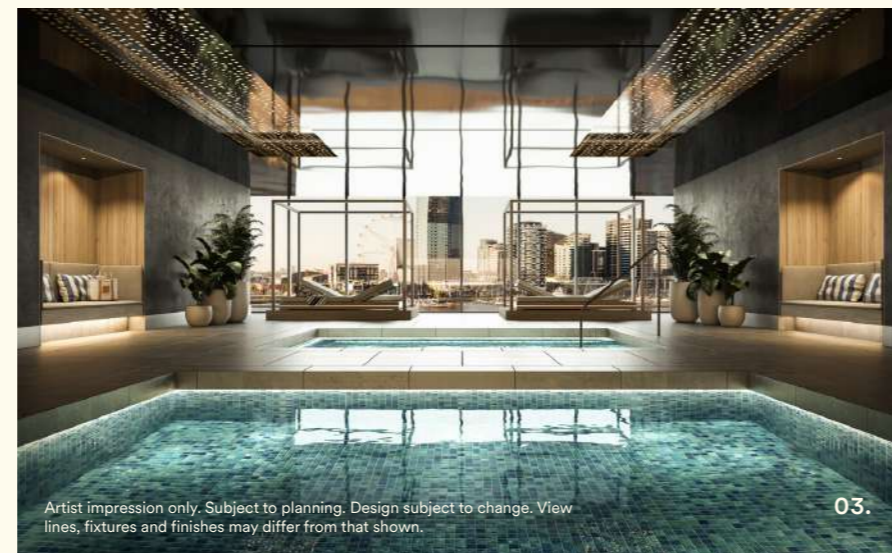
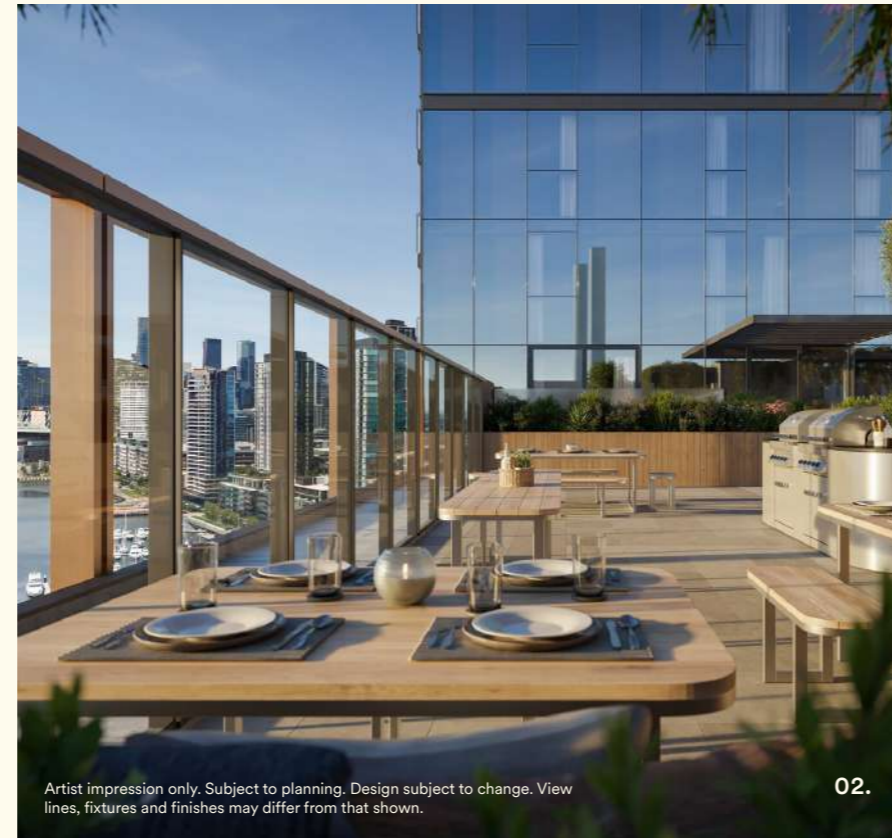
ROOFTOP TERRACE

Multiple rooftop spaces ensure you stay connected to the outdoors all year-round. Take in the sweeping water and city views as you enjoy a barbecue surrounded by the lush surrounds.

03.

INDOOR POOL & SAUNA

Begin your day with an early morning sauna and swim in the 25-metre residents' pool, steam room and spa, and immerse yourself in the picturesque views.



04.

THE COLLINS ROOM

Gather in the stunning resident's lounge and dining area as you take in the view of Victoria Harbour, the spectacular backdrop for your private function.

05.

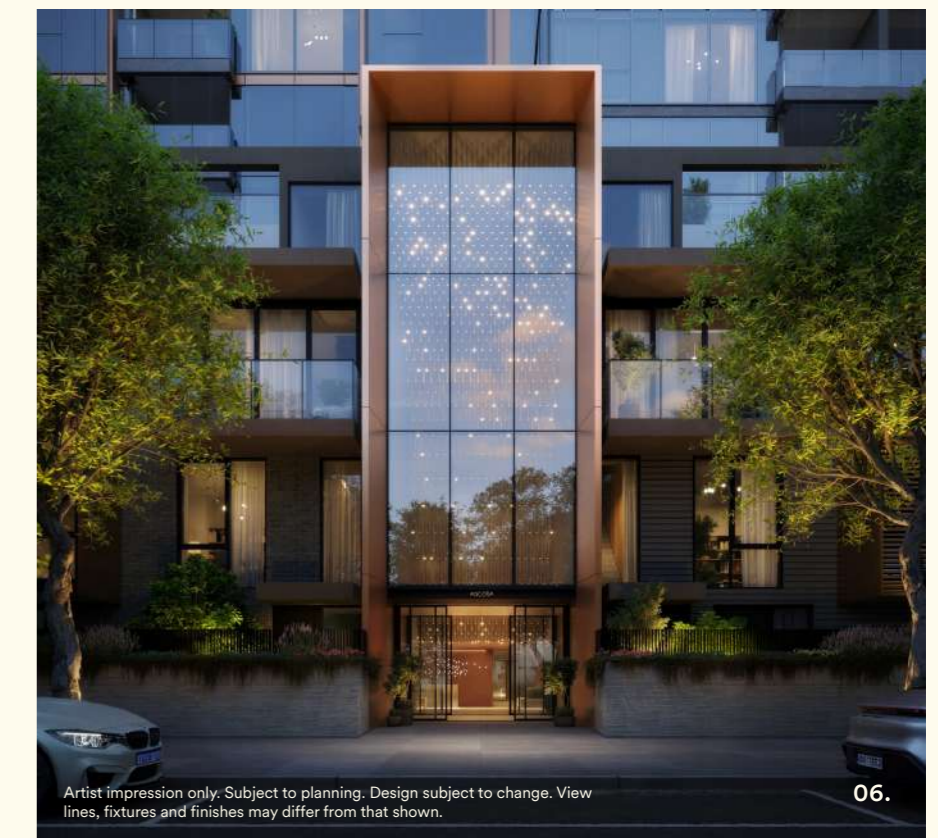
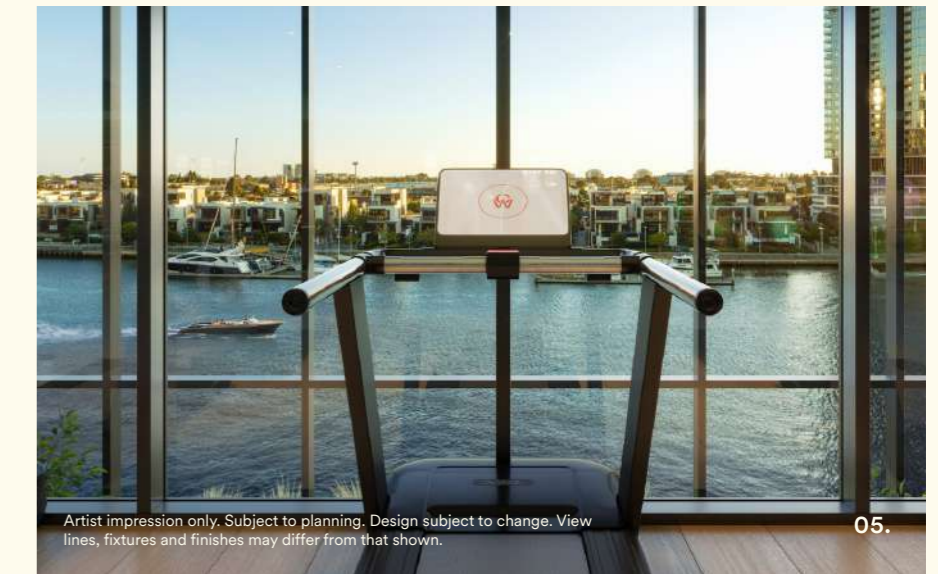
GYMNASIUM

There's nothing like running on a treadmill or lifting weights with a beautiful backdrop of Melbourne's city skyline.

06.

THE LOBBY

Enjoy five-star, hotel-style concierge convenience including booking services within the Ancora, parcel delivery and more.



REALISED BY LENDLEASE

INTERIOR



01.

1 BED APARTMENT

Embodying stylish functionality and spectacular outlooks, these tranquil retreats exude a sense of space, warmth and liveability. Thoughtfully curated interior schemes and modern amenities including Miele appliances provide sun-dappled sanctuaries of comfort and sophistication.



LIGHT

WARM





WARM

Artist impression only. Subject to planning. Design subject to change.
View lines, fixtures and finishes may differ from that shown.



LIGHT

Artist impression only. Subject to planning. Design subject to change.
View lines, fixtures and finishes may differ from that shown.



Artist impression only. Subject to planning. Design subject to change.
View lines, fixtures and finishes may differ from that shown.



Artist impression only. Subject to planning. Design subject to change.
View lines, fixtures and finishes may differ from that shown.

WARM

LIGHT



Artist impression only. Subject to planning. Design subject to change.
View lines, fixtures and finishes may differ from that shown.



Artist impression only. Subject to planning. Design subject to change.
View lines, fixtures and finishes may differ from that shown.

02.

2 BED APARTMENT

These meticulously crafted residences combine timeless elegance with modern convenience, offering abundant space for every lifestyle. Light-filled and with postcard vistas, each apartment combines sleek finishes and high-end Miele appliances to infuse a home of elegance and calm.



Artist impression only. Subject to planning. Design subject to change.
View lines, fixtures and finishes may differ from that shown.

LIGHT

WARM



Artist impression only. Subject to planning. Design subject to change.
View lines, fixtures and finishes may differ from that shown.



WARM

Artist impression only. Subject to planning. Design subject to change.
View lines, fixtures and finishes may differ from that shown.



LIGHT

Artist impression only. Subject to planning. Design subject to change.
View lines, fixtures and finishes may differ from that shown.



Artist impression only. Subject to planning. Design subject to change.
View lines, fixtures and finishes may differ from that shown.



Artist impression only. Subject to planning. Design subject to change.
View lines, fixtures and finishes may differ from that shown.

WARM

LIGHT



Artist impression only. Subject to planning. Design subject to change.
View lines, fixtures and finishes may differ from that shown.



Artist impression only. Subject to planning. Design subject to change.
View lines, fixtures and finishes may differ from that shown.

LIGHT

WARM



Artist impression only. Subject to planning. Design subject to change.
View lines, fixtures and finishes may differ from that shown.

03.

3 BED APARTMENT

Designed to exceed expectations, these stunning residences showcase the epitome of waterfront living. Retreats of spaciousness and superior contemporary design with luxury Miele appliances and finishes, with each apartment is an exemplary backdrop for easy living, relaxation and entertaining in stunning water-filled surrounds.



Artist impression only. Subject to planning. Design subject to change.
View lines, fixtures and finishes may differ from that shown.



Artist impression only. Subject to planning. Design subject to change.
View lines, fixtures and finishes may differ from that shown.

WARM



Artist impression only. Subject to planning. Design subject to change.
View lines, fixtures and finishes may differ from that shown.

LIGHT



Artist impression only. Subject to planning. Design subject to change.
View lines, fixtures and finishes may differ from that shown.



Artist impression only. Subject to planning. Design subject to change.
View lines, fixtures and finishes may differ from that shown.

WARM

LIGHT



Artist impression only. Subject to planning. Design subject to change.
View lines, fixtures and finishes may differ from that shown.



Artist impression only. Subject to planning. Design subject to change.
View lines, fixtures and finishes may differ from that shown.

REALISED BY LENDLEASE

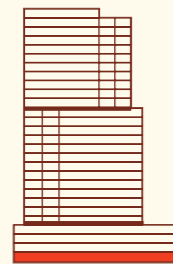
FLOORPLATES



ANCORA

GROUND FLOOR

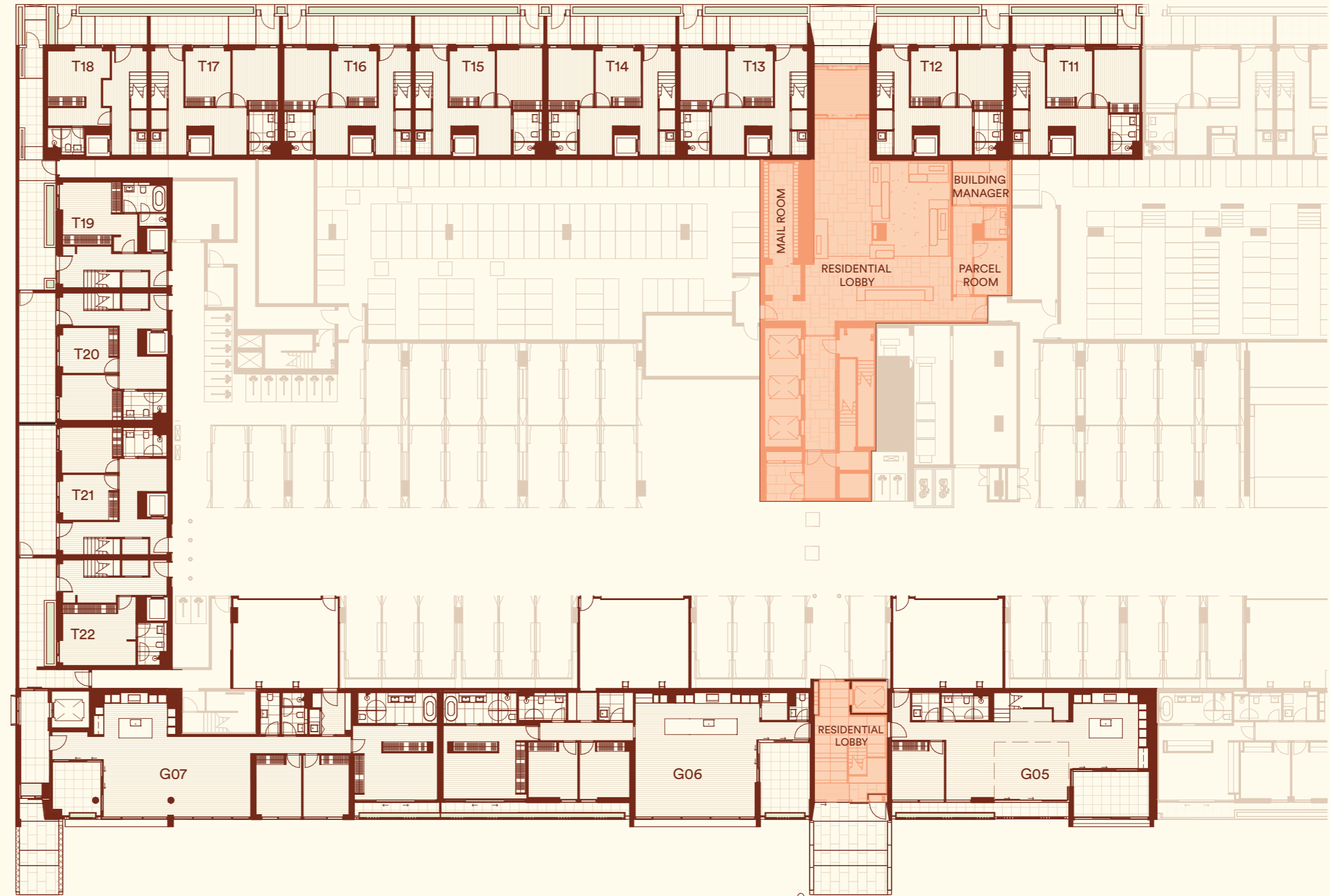
APT NO.	INTERNAL	BALCONY	TOTAL
G05	236M ²	29M ²	265M ²
G06	178M ²	31M ²	209M ²
G07	175M ²	18M ²	193M ²
T11	220M ²	56M ²	276M ²
T12	223M ²	57M ²	280M ²
T13	220M ²	55M ²	275M ²
T14	218M ²	54M ²	272M ²
T15	218M ²	55M ²	273M ²
T16	218M ²	55M ²	273M ²
T17	218M ²	55M ²	273M ²
T18	205M ²	50M ²	255M ²
T19	205M ²	57M ²	262M ²
T20	223M ²	60M ²	283M ²
T21	222M ²	60M ²	282M ²
T22	210M ²	56M ²	266M ²



COLLINS

MELBOURNE

WHARF



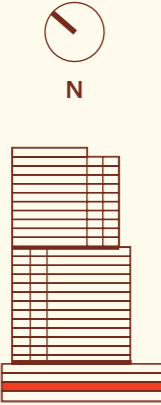
REALISED BY



Disclaimer: These are preliminary, indicative floor plans not drawn to scale and are subject to planning and other approvals. Please note that these floor plans were produced prior to completion of construction. Any measurements shown are calculated in accordance with the relevant method of measurement published by the Property Council of Australia. Location and extent of solid façade elements, apartment dimensions, floor and apartment layouts, levels, designs, diagrams, structures, configurations, and ratios of different configurations, tile set-out, areas, fittings, finishes and specifications are approximate only and subject to change without notice in accordance with the provisions of the Contract of Sale or where required for compliance, planning, building regulations, other laws or for any other reason. The furniture is not included with any sale unless otherwise disclosed in the Contract for Sale. Prospective purchasers must make and only rely on their own assessments and seek their own professional advice in all respects. Prepared March 2024. These are representations as to future matters based on an honest and reasonable view currently held by the vendor but what is represented is subject to planning and other approvals which may change.

ANCORA
LEVEL 1

APT NO.	INTERNAL	BALCONY	TOTAL
103	178M ²	14M ²	192M ²
104	195M ²	12M ²	207M ²



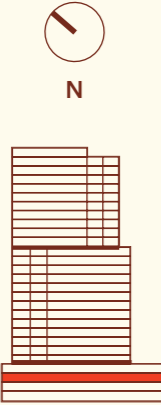
COLLINS
MELBOURNE
WHARF

REALISED BY 

Disclaimer: These are preliminary, indicative floor plans not drawn to scale and are subject to planning and other approvals. Please note that these floor plans were produced prior to completion of construction. Any measurements shown are calculated in accordance with the relevant method of measurement published by the Property Council of Australia. Location and extent of solid façade elements, apartment dimensions, floor and apartment layouts, levels, designs, diagrams, structures, configurations, and ratios of different configurations, tile set-out, areas, fittings, finishes and specifications are approximate only and subject to change without notice in accordance with the provisions of the Contract of Sale or where required for compliance, planning, building regulations, other laws or for any other reason. The furniture is not included with any sale unless otherwise disclosed in the Contract for Sale. Prospective purchasers must make and only rely on their own assessments and seek their own professional advice in all respects. Prepared March 2024. These are representations as to future matters based on an honest and reasonable view currently held by the vendor but what is represented is subject to planning and other approvals which may change.

ANCORA
LEVEL 2

APT NO.	INTERNAL	BALCONY	TOTAL
204	236M ²	17M ²	253M ²
205	178M ²	14M ²	192M ²
206	195M ²	13M ²	208M ²



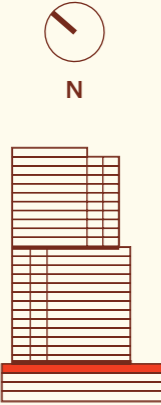
COLLINS
MELBOURNE
WHARF

REALISED BY **lendlease**

Disclaimer: These are preliminary, indicative floor plans not drawn to scale and are subject to planning and other approvals. Please note that these floor plans were produced prior to completion of construction. Any measurements shown are calculated in accordance with the relevant method of measurement published by the Property Council of Australia. Location and extent of solid façade elements, apartment dimensions, floor and apartment layouts, levels, designs, diagrams, structures, configurations, and ratios of different configurations, tile set-out, areas, fittings, finishes and specifications are approximate only and subject to change without notice in accordance with the provisions of the Contract of Sale or where required for compliance, planning, building regulations, other laws or for any other reason. The furniture is not included with any sale unless otherwise disclosed in the Contract for Sale. Prospective purchasers must make and only rely on their own assessments and seek their own professional advice in all respects. Prepared March 2024. These are representations as to future matters based on an honest and reasonable view currently held by the vendor but what is represented is subject to planning and other approvals which may change.

ANCORA
LEVEL 3

APT NO.	INTERNAL	BALCONY	TOTAL
304	178M ²	14M ²	192M ²
305	195M ²	13M ²	208M ²



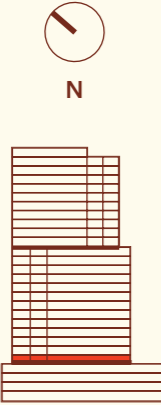
COLLINS
MELBOURNE
WHARF

REALISED BY **lendlease**

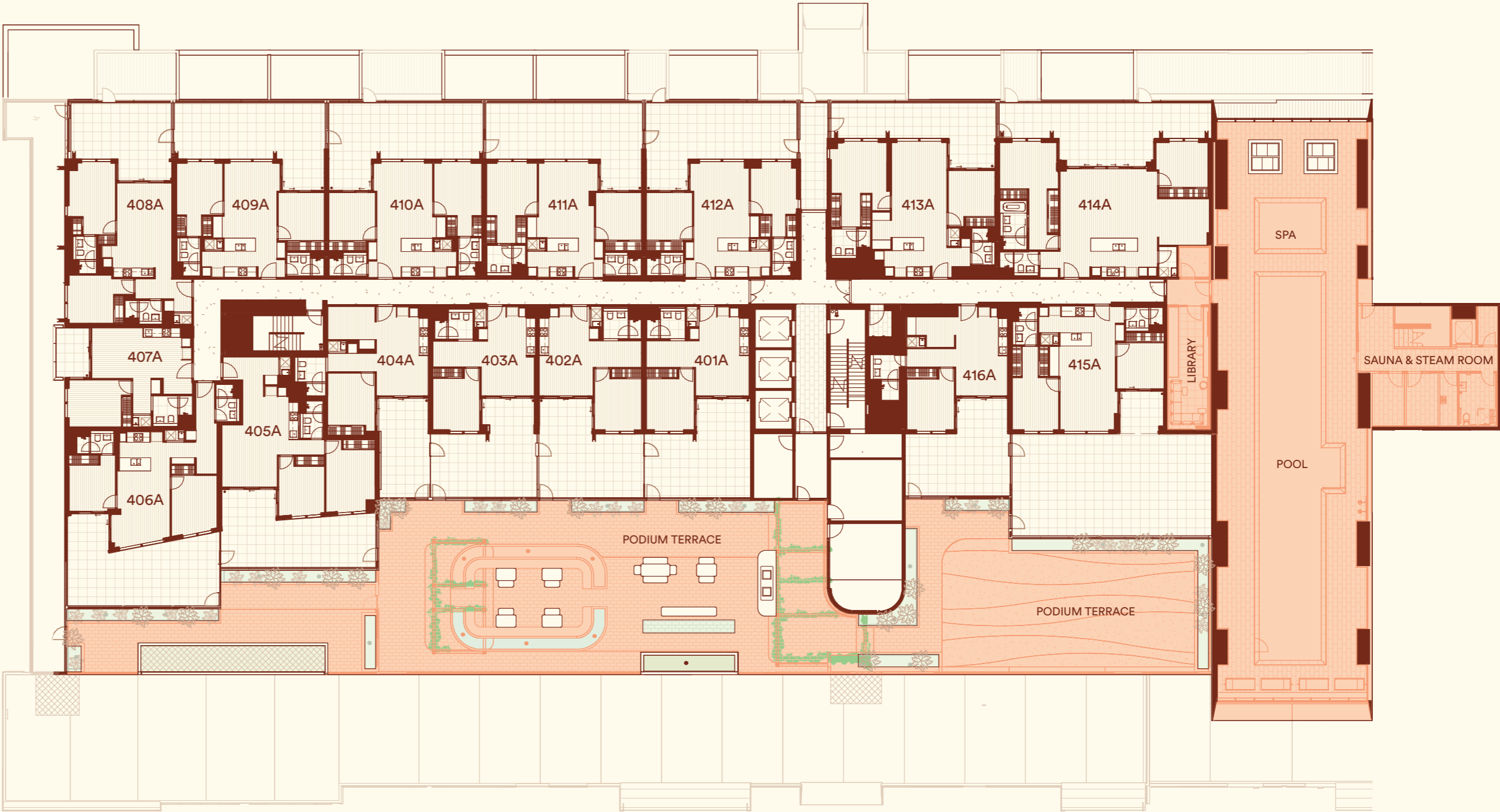
Disclaimer: These are preliminary, indicative floor plans not drawn to scale and are subject to planning and other approvals. Please note that these floor plans were produced prior to completion of construction. Any measurements shown are calculated in accordance with the relevant method of measurement published by the Property Council of Australia. Location and extent of solid façade elements, apartment dimensions, floor and apartment layouts, levels, designs, diagrams, structures, configurations, and ratios of different configurations, tile set-out, areas, fittings, finishes and specifications are approximate only and subject to change without notice in accordance with the provisions of the Contract of Sale or where required for compliance, planning, building regulations, other laws or for any other reason. The furniture is not included with any sale unless otherwise disclosed in the Contract for Sale. Prospective purchasers must make and only rely on their own assessments and seek their own professional advice in all respects. Prepared March 2024. These are representations as to future matters based on an honest and reasonable view currently held by the vendor but what is represented is subject to planning and other approvals which may change.

ANCORA
LEVEL 4

APT NO.	INTERNAL	BALCONY	TOTAL
401A	50M ²	38M ²	88M ²
402A	50M ²	38M ²	88M ²
403A	50M ²	38M ²	88M ²
404A	56M ²	23M ²	79M ²
405A	74M ²	42M ²	116M ²
406A	78M ²	47M ²	125M ²
407A	50M ²	9M ²	59M ²
408A	76M ²	31M ²	107M ²
409A	72M ²	44M ²	116M ²
410A	75M ²	45M ²	120M ²
411A	76M ²	45M ²	121M ²
412A	74M ²	44M ²	118M ²
413A	89M ²	33M ²	122M ²
414A	114M ²	45M ²	159M ²
415A	79M ²	97M ²	176M ²
416A	53M ²	37M ²	90M ²



COLLINS
MELBOURNE
WHARF

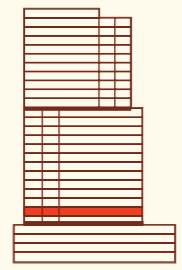


REALISED BY **lendlease**

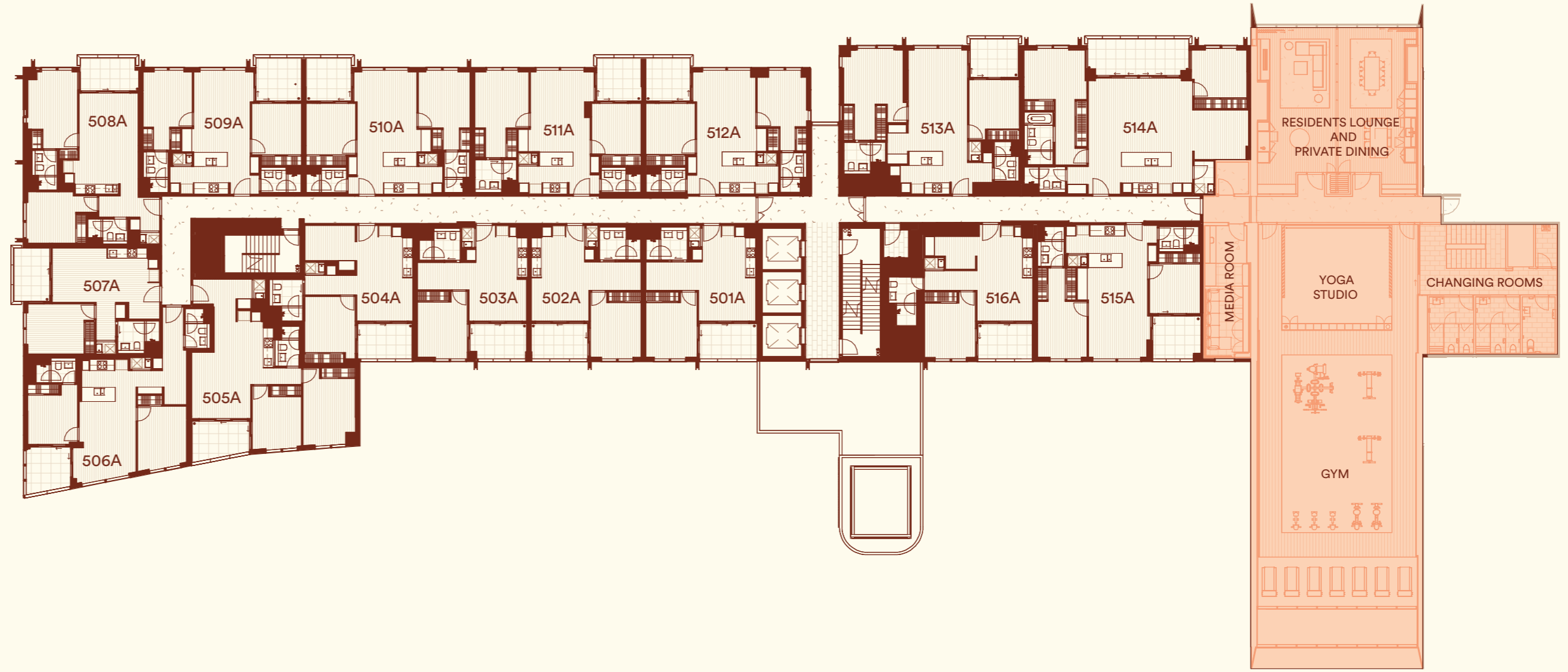
Disclaimer: These are preliminary, indicative floor plans not drawn to scale and are subject to planning and other approvals. Please note that these floor plans were produced prior to completion of construction. Any measurements shown are calculated in accordance with the relevant method of measurement published by the Property Council of Australia. Location and extent of solid façade elements, apartment dimensions, floor and apartment layouts, levels, designs, diagrams, structures, configurations, and ratios of different configurations, tile set-out, areas, fittings, finishes and specifications are approximate only and subject to change without notice in accordance with the provisions of the Contract of Sale or where required for compliance, planning, building regulations, other laws or for any other reason. The furniture is not included with any sale unless otherwise disclosed in the Contract for Sale. Prospective purchasers must make and only rely on their own assessments and seek their own professional advice in all respects. Prepared March 2024. These are representations as to future matters based on an honest and reasonable view currently held by the vendor but what is represented is subject to planning and other approvals which may change.

ANCORA
LEVEL 5

APT NO.	INTERNAL	BALCONY	TOTAL
501A	50M ²	9M ²	59M ²
502A	50M ²	9M ²	59M ²
503A	50M ²	9M ²	59M ²
504A	56M ²	9M ²	65M ²
505A	74M ²	9M ²	83M ²
506A	79M ²	9M ²	88M ²
507A	50M ²	9M ²	59M ²
508A	76M ²	8M ²	84M ²
509A	72M ²	9M ²	81M ²
510A	75M ²	9M ²	84M ²
511A	76M ²	8M ²	84M ²
512A	74M ²	8M ²	82M ²
513A	89M ²	8M ²	97M ²
514A	114M ²	15M ²	129M ²
515A	79M ²	9M ²	88M ²
516A	53M ²	9M ²	62M ²



COLLINS
MELBOURNE
WHARF



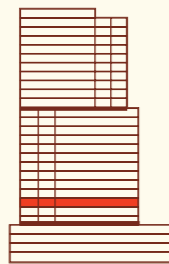
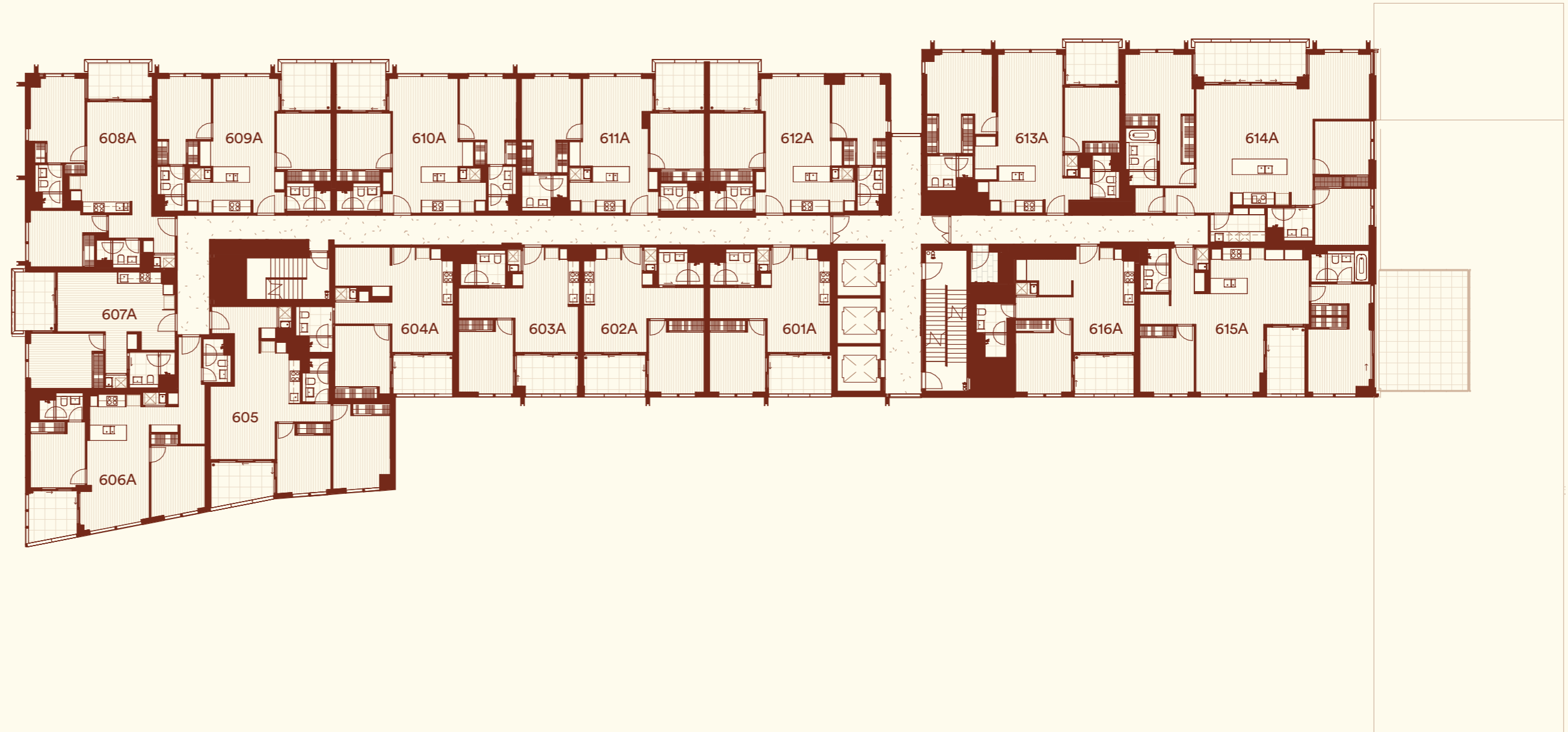
REALISED BY 

Disclaimer: These are preliminary, indicative floor plans not drawn to scale and are subject to planning and other approvals. Please note that these floor plans were produced prior to completion of construction. Any measurements shown are calculated in accordance with the relevant method of measurement published by the Property Council of Australia. Location and extent of solid façade elements, apartment dimensions, floor and apartment layouts, levels, designs, diagrams, structures, configurations, and ratios of different configurations, tile set-out, areas, fittings, finishes and specifications are approximate only and subject to change without notice in accordance with the provisions of the Contract of Sale or where required for compliance, planning, building regulations, other laws or for any other reason. The furniture is not included with any sale unless otherwise disclosed in the Contract for Sale. Prospective purchasers must make and only rely on their own assessments and seek their own professional advice in all respects. Prepared March 2024. These are representations as to future matters based on an honest and reasonable view currently held by the vendor but what is represented is subject to planning and other approvals which may change.

ANCORA

LEVEL 6

APT NO.	INTERNAL	BALCONY	TOTAL
601A	50M ²	9M ²	59M ²
602A	50M ²	9M ²	59M ²
603A	50M ²	9M ²	59M ²
604A	56M ²	9M ²	65M ²
605A	74M ²	9M ²	83M ²
606A	79M ²	9M ²	88M ²
607A	50M ²	9M ²	59M ²
608A	76M ²	8M ²	84M ²
609A	72M ²	9M ²	81M ²
610A	75M ²	9M ²	84M ²
611A	76M ²	8M ²	84M ²
612A	74M ²	8M ²	82M ²
613A	89M ²	8M ²	97M ²
614A	132M ²	15M ²	147M ²
615A	102M ²	44M ²	146M ²
616A	53M ²	9M ²	62M ²



COLLINS

MELBOURNE

WHARF

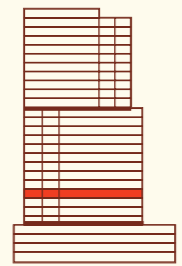
REALISED BY



Disclaimer: These are preliminary, indicative floor plans not drawn to scale and are subject to planning and other approvals. Please note that these floor plans were produced prior to completion of construction. Any measurements shown are calculated in accordance with the relevant method of measurement published by the Property Council of Australia. Location and extent of solid façade elements, apartment dimensions, floor and apartment layouts, levels, designs, diagrams, structures, configurations, and ratios of different configurations, tile set-out, areas, fittings, finishes and specifications are approximate only and subject to change without notice in accordance with the provisions of the Contract of Sale or where required for compliance, planning, building regulations, other laws or for any other reason. The furniture is not included with any sale unless otherwise disclosed in the Contract for Sale. Prospective purchasers must make and only rely on their own assessments and seek their own professional advice in all respects. Prepared March 2024. These are representations as to future matters based on an honest and reasonable view currently held by the vendor but what is represented is subject to planning and other approvals which may change.

ANCORA
LEVEL 7

APT NO.	INTERNAL	BALCONY	TOTAL
701A	50M ²	9M ²	59M ²
702A	50M ²	9M ²	59M ²
703A	50M ²	9M ²	59M ²
704A	56M ²	9M ²	65M ²
705A	74M ²	9M ²	83M ²
706A	79M ²	9M ²	88M ²
707A	50M ²	9M ²	59M ²
708A	76M ²	8M ²	84M ²
709A	72M ²	9M ²	81M ²
710A	75M ²	9M ²	84M ²
711A	76M ²	8M ²	84M ²
712A	74M ²	8M ²	82M ²
713A	89M ²	8M ²	97M ²
714A	135M ²	15M ²	150M ²
715A	105M ²	8M ²	113M ²
716A	53M ²	9M ²	62M ²



COLLINS

MELBOURNE

WHARF

REALISED BY

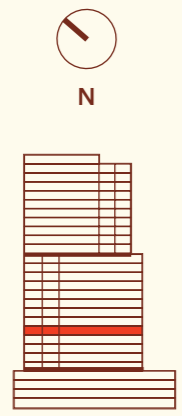


Disclaimer: These are preliminary, indicative floor plans not drawn to scale and are subject to planning and other approvals. Please note that these floor plans were produced prior to completion of construction. Any measurements shown are calculated in accordance with the relevant method of measurement published by the Property Council of Australia. Location and extent of solid façade elements, apartment dimensions, floor and apartment layouts, levels, designs, diagrams, structures, configurations, and ratios of different configurations, tile set-out, areas, fittings, finishes and specifications are approximate only and subject to change without notice in accordance with the provisions of the Contract of Sale or where required for compliance, planning, building regulations, other laws or for any other reason. The furniture is not included with any sale unless otherwise disclosed in the Contract for Sale. Prospective purchasers must make and only rely on their own assessments and seek their own professional advice in all respects. Prepared March 2024. These are representations as to future matters based on an honest and reasonable view currently held by the vendor but what is represented is subject to planning and other approvals which may change.

ANCORA

LEVEL 8

APT NO.	INTERNAL	BALCONY	TOTAL
801A	50M ²	9M ²	59M ²
802A	50M ²	9M ²	59M ²
803A	50M ²	9M ²	59M ²
804A	56M ²	9M ²	65M ²
805A	74M ²	9M ²	83M ²
806A	79M ²	9M ²	88M ²
807A	50M ²	9M ²	59M ²
808A	76M ²	8M ²	84M ²
809A	72M ²	9M ²	81M ²
810A	75M ²	9M ²	84M ²
811A	76M ²	8M ²	84M ²
812A	74M ²	8M ²	82M ²
813A	89M ²	8M ²	97M ²
814A	135M ²	15M ²	150M ²
815A	105M ²	8M ²	113M ²
816A	53M ²	9M ²	62M ²



COLLINS
MELBOURNE
WHARF

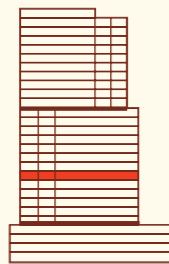
REALISED BY **lendlease**

Disclaimer: These are preliminary, indicative floor plans not drawn to scale and are subject to planning and other approvals. Please note that these floor plans were produced prior to completion of construction. Any measurements shown are calculated in accordance with the relevant method of measurement published by the Property Council of Australia. Location and extent of solid façade elements, apartment dimensions, floor and apartment layouts, levels, designs, diagrams, structures, configurations, and ratios of different configurations, tile set-out, areas, fittings, finishes and specifications are approximate only and subject to change without notice in accordance with the provisions of the Contract of Sale or where required for compliance, planning, building regulations, other laws or for any other reason. The furniture is not included with any sale unless otherwise disclosed in the Contract for Sale. Prospective purchasers must make and only rely on their own assessments and seek their own professional advice in all respects. Prepared March 2024. These are representations as to future matters based on an honest and reasonable view currently held by the vendor but what is represented is subject to planning and other approvals which may change.

ANCORA

LEVEL 9

APT NO.	INTERNAL	BALCONY	TOTAL
901A	50M ²	9M ²	59M ²
902A	50M ²	9M ²	59M ²
903A	50M ²	9M ²	59M ²
904A	56M ²	9M ²	65M ²
905A	74M ²	9M ²	83M ²
906A	79M ²	9M ²	88M ²
907A	50M ²	9M ²	59M ²
908A	76M ²	8M ²	84M ²
909A	72M ²	9M ²	81M ²
910A	75M ²	9M ²	84M ²
911A	76M ²	8M ²	84M ²
912A	74M ²	8M ²	82M ²
913A	89M ²	8M ²	97M ²
914A	135M ²	15M ²	150M ²
915A	105M ²	8M ²	113M ²
916A	53M ²	9M ²	62M ²



COLLINS

MELBOURNE

WHARF

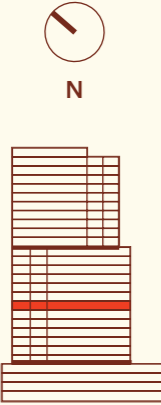
REALISED BY



Disclaimer: These are preliminary, indicative floor plans not drawn to scale and are subject to planning and other approvals. Please note that these floor plans were produced prior to completion of construction. Any measurements shown are calculated in accordance with the relevant method of measurement published by the Property Council of Australia. Location and extent of solid façade elements, apartment dimensions, floor and apartment layouts, levels, designs, diagrams, structures, configurations, and ratios of different configurations, tile set-out, areas, fittings, finishes and specifications are approximate only and subject to change without notice in accordance with the provisions of the Contract of Sale or where required for compliance, planning, building regulations, other laws or for any other reason. The furniture is not included with any sale unless otherwise disclosed in the Contract for Sale. Prospective purchasers must make and only rely on their own assessments and seek their own professional advice in all respects. Prepared March 2024. These are representations as to future matters based on an honest and reasonable view currently held by the vendor but what is represented is subject to planning and other approvals which may change.

ANCORA
LEVEL 10

APT NO.	INTERNAL	BALCONY	TOTAL
1001A	50M ²	9M ²	59M ²
1002A	50M ²	9M ²	59M ²
1003A	50M ²	9M ²	59M ²
1004A	56M ²	9M ²	65M ²
1005A	74M ²	9M ²	83M ²
1006A	79M ²	9M ²	88M ²
1007A	50M ²	9M ²	59M ²
1008A	76M ²	8M ²	84M ²
1009A	72M ²	9M ²	81M ²
1010A	75M ²	9M ²	84M ²
1011A	76M ²	8M ²	84M ²
1012A	74M ²	8M ²	82M ²
1013A	89M ²	8M ²	97M ²
1014A	135M ²	15M ²	150M ²
1015A	105M ²	8M ²	113M ²
1016A	53M ²	9M ²	62M ²



COLLINS
MELBOURNE
WHARF

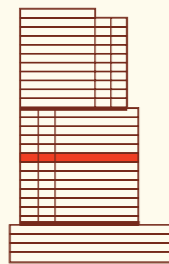


Disclaimer: These are preliminary, indicative floor plans not drawn to scale and are subject to planning and other approvals. Please note that these floor plans were produced prior to completion of construction. Any measurements shown are calculated in accordance with the relevant method of measurement published by the Property Council of Australia. Location and extent of solid façade elements, apartment dimensions, floor and apartment layouts, levels, designs, diagrams, structures, configurations, and ratios of different configurations, tile set-out, areas, fittings, finishes and specifications are approximate only and subject to change without notice in accordance with the provisions of the Contract of Sale or where required for compliance, planning, building regulations, other laws or for any other reason. The furniture is not included with any sale unless otherwise disclosed in the Contract for Sale. Prospective purchasers must make and only rely on their own assessments and seek their own professional advice in all respects. Prepared March 2024. These are representations as to future matters based on an honest and reasonable view currently held by the vendor but what is represented is subject to planning and other approvals which may change.

ANCORA

LEVEL 11

APT NO.	INTERNAL	BALCONY	TOTAL
1101A	50M ²	9M ²	59M ²
1102A	50M ²	9M ²	59M ²
1103A	50M ²	9M ²	59M ²
1104A	56M ²	9M ²	65M ²
1105A	74M ²	9M ²	83M ²
1106A	79M ²	9M ²	88M ²
1107A	50M ²	9M ²	59M ²
1108A	76M ²	8M ²	84M ²
1109A	72M ²	9M ²	81M ²
1110A	75M ²	9M ²	84M ²
1111A	76M ²	8M ²	84M ²
1112A	74M ²	8M ²	82M ²
1113A	89M ²	8M ²	97M ²
1114A	135M ²	15M ²	150M ²
1115A	105M ²	8M ²	113M ²
1116A	53M ²	9M ²	62M ²



COLLINS

MELBOURNE

WHARF

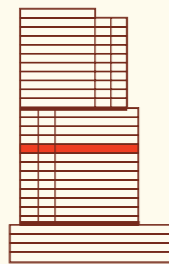
REALISED BY



Disclaimer: These are preliminary, indicative floor plans not drawn to scale and are subject to planning and other approvals. Please note that these floor plans were produced prior to completion of construction. Any measurements shown are calculated in accordance with the relevant method of measurement published by the Property Council of Australia. Location and extent of solid façade elements, apartment dimensions, floor and apartment layouts, levels, designs, diagrams, structures, configurations, and ratios of different configurations, tile set-out, areas, fittings, finishes and specifications are approximate only and subject to change without notice in accordance with the provisions of the Contract of Sale or where required for compliance, planning, building regulations, other laws or for any other reason. The furniture is not included with any sale unless otherwise disclosed in the Contract for Sale. Prospective purchasers must make and only rely on their own assessments and seek their own professional advice in all respects. Prepared March 2024. These are representations as to future matters based on an honest and reasonable view currently held by the vendor but what is represented is subject to planning and other approvals which may change.

ANCORA
LEVEL 12

APT NO.	INTERNAL	BALCONY	TOTAL
1201A	50M ²	9M ²	59M ²
1202A	50M ²	9M ²	59M ²
1203A	50M ²	9M ²	59M ²
1204A	56M ²	9M ²	65M ²
1205A	74M ²	9M ²	83M ²
1206A	79M ²	9M ²	88M ²
1207A	50M ²	9M ²	59M ²
1208A	76M ²	8M ²	84M ²
1209A	72M ²	9M ²	81M ²
1210A	75M ²	9M ²	84M ²
1211A	76M ²	8M ²	84M ²
1212A	74M ²	8M ²	82M ²
1213A	89M ²	8M ²	97M ²
1214A	135M ²	15M ²	150M ²
1215A	105M ²	8M ²	113M ²
1216A	53M ²	9M ²	62M ²



COLLINS

MELBOURNE

WHARF

REALISED BY

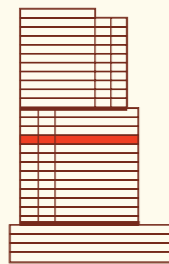


Disclaimer: These are preliminary, indicative floor plans not drawn to scale and are subject to planning and other approvals. Please note that these floor plans were produced prior to completion of construction. Any measurements shown are calculated in accordance with the relevant method of measurement published by the Property Council of Australia. Location and extent of solid façade elements, apartment dimensions, floor and apartment layouts, levels, designs, diagrams, structures, configurations, and ratios of different configurations, tile set-out, areas, fittings, finishes and specifications are approximate only and subject to change without notice in accordance with the provisions of the Contract of Sale or where required for compliance, planning, building regulations, other laws or for any other reason. The furniture is not included with any sale unless otherwise disclosed in the Contract for Sale. Prospective purchasers must make and only rely on their own assessments and seek their own professional advice in all respects. Prepared March 2024. These are representations as to future matters based on an honest and reasonable view currently held by the vendor but what is represented is subject to planning and other approvals which may change.

ANCORA

LEVEL 13

APT NO.	INTERNAL	BALCONY	TOTAL
1301A	50M ²	9M ²	59M ²
1302A	50M ²	9M ²	59M ²
1303A	50M ²	9M ²	59M ²
1304A	56M ²	9M ²	65M ²
1305A	74M ²	9M ²	83M ²
1306A	79M ²	9M ²	88M ²
1307A	50M ²	9M ²	59M ²
1308A	76M ²	8M ²	84M ²
1309A	72M ²	9M ²	81M ²
1310A	75M ²	9M ²	84M ²
1311A	76M ²	8M ²	84M ²
1312A	74M ²	8M ²	82M ²
1313A	89M ²	8M ²	97M ²
1314A	135M ²	15M ²	150M ²
1315A	105M ²	8M ²	113M ²
1316A	53M ²	9M ²	62M ²



COLLINS

MELBOURNE

WHARF

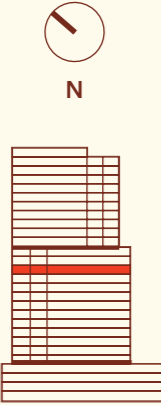
REALISED BY



Disclaimer: These are preliminary, indicative floor plans not drawn to scale and are subject to planning and other approvals. Please note that these floor plans were produced prior to completion of construction. Any measurements shown are calculated in accordance with the relevant method of measurement published by the Property Council of Australia. Location and extent of solid façade elements, apartment dimensions, floor and apartment layouts, levels, designs, diagrams, structures, configurations, and ratios of different configurations, tile set-out, areas, fittings, finishes and specifications are approximate only and subject to change without notice in accordance with the provisions of the Contract of Sale or where required for compliance, planning, building regulations, other laws or for any other reason. The furniture is not included with any sale unless otherwise disclosed in the Contract for Sale. Prospective purchasers must make and only rely on their own assessments and seek their own professional advice in all respects. Prepared March 2024. These are representations as to future matters based on an honest and reasonable view currently held by the vendor but what is represented is subject to planning and other approvals which may change.

ANCORA
LEVEL 14

APT NO.	INTERNAL	BALCONY	TOTAL
1401A	50M ²	9M ²	59M ²
1402A	50M ²	9M ²	59M ²
1403A	50M ²	9M ²	59M ²
1404A	56M ²	9M ²	65M ²
1405A	74M ²	9M ²	83M ²
1406A	79M ²	9M ²	88M ²
1407A	50M ²	9M ²	59M ²
1408A	76M ²	8M ²	84M ²
1409A	72M ²	9M ²	81M ²
1410A	75M ²	9M ²	84M ²
1411A	76M ²	8M ²	84M ²
1412A	74M ²	8M ²	82M ²
1413A	89M ²	8M ²	97M ²
1414A	135M ²	15M ²	150M ²
1415A	105M ²	8M ²	113M ²
1416A	53M ²	9M ²	62M ²



COLLINS
MELBOURNE
WHARF

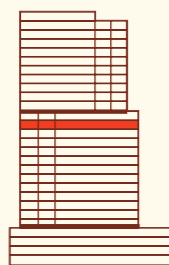
REALISED BY **lendlease**

Disclaimer: These are preliminary, indicative floor plans not drawn to scale and are subject to planning and other approvals. Please note that these floor plans were produced prior to completion of construction. Any measurements shown are calculated in accordance with the relevant method of measurement published by the Property Council of Australia. Location and extent of solid façade elements, apartment dimensions, floor and apartment layouts, levels, designs, diagrams, structures, configurations, and ratios of different configurations, tile set-out, areas, fittings, finishes and specifications are approximate only and subject to change without notice in accordance with the provisions of the Contract of Sale or where required for compliance, planning, building regulations, other laws or for any other reason. The furniture is not included with any sale unless otherwise disclosed in the Contract for Sale. Prospective purchasers must make and only rely on their own assessments and seek their own professional advice in all respects. Prepared March 2024. These are representations as to future matters based on an honest and reasonable view currently held by the vendor but what is represented is subject to planning and other approvals which may change.

ANCORA

LEVEL 15

APT NO.	INTERNAL	BALCONY	TOTAL
1501A	50M ²	9M ²	59M ²
1502A	50M ²	9M ²	59M ²
1503A	50M ²	9M ²	59M ²
1504A	56M ²	9M ²	65M ²
1505A	74M ²	9M ²	83M ²
1506A	79M ²	9M ²	88M ²
1507A	50M ²	9M ²	59M ²
1508A	76M ²	8M ²	84M ²
1509A	72M ²	9M ²	81M ²
1510A	75M ²	9M ²	84M ²
1511A	76M ²	8M ²	84M ²
1512A	74M ²	8M ²	82M ²
1513A	89M ²	8M ²	97M ²
1514A	135M ²	15M ²	150M ²
1515A	105M ²	8M ²	113M ²
1516A	53M ²	9M ²	62M ²



COLLINS

MELBOURNE

WHARF

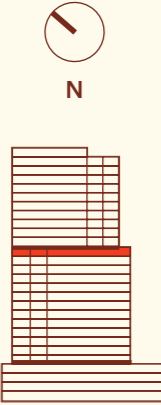
REALISED BY



Disclaimer: These are preliminary, indicative floor plans not drawn to scale and are subject to planning and other approvals. Please note that these floor plans were produced prior to completion of construction. Any measurements shown are calculated in accordance with the relevant method of measurement published by the Property Council of Australia. Location and extent of solid façade elements, apartment dimensions, floor and apartment layouts, levels, designs, diagrams, structures, configurations, and ratios of different configurations, tile set-out, areas, fittings, finishes and specifications are approximate only and subject to change without notice in accordance with the provisions of the Contract of Sale or where required for compliance, planning, building regulations, other laws or for any other reason. The furniture is not included with any sale unless otherwise disclosed in the Contract for Sale. Prospective purchasers must make and only rely on their own assessments and seek their own professional advice in all respects. Prepared March 2024. These are representations as to future matters based on an honest and reasonable view currently held by the vendor but what is represented is subject to planning and other approvals which may change.

ANCORA
LEVEL 16

APT NO.	INTERNAL	BALCONY	TOTAL
1601A	50M ²	9M ²	59M ²
1602A	82M ²	29M ²	111M ²
1603A	84M ²	21M ²	105M ²
1604A	74M ²	8M ²	82M ²
1605A	89M ²	8M ²	97M ²
1606A	134M ²	15M ²	149M ²
1607A	105M ²	8M ²	113M ²
1608A	53M ²	9M ²	62M ²



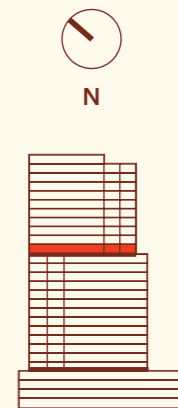
COLLINS
MELBOURNE
WHARF

REALISED BY 

Disclaimer: These are preliminary, indicative floor plans not drawn to scale and are subject to planning and other approvals. Please note that these floor plans were produced prior to completion of construction. Any measurements shown are calculated in accordance with the relevant method of measurement published by the Property Council of Australia. Location and extent of solid façade elements, apartment dimensions, floor and apartment layouts, levels, designs, diagrams, structures, configurations, and ratios of different configurations, tile set-out, areas, fittings, finishes and specifications are approximate only and subject to change without notice in accordance with the provisions of the Contract of Sale or where required for compliance, planning, building regulations, other laws or for any other reason. The furniture is not included with any sale unless otherwise disclosed in the Contract for Sale. Prospective purchasers must make and only rely on their own assessments and seek their own professional advice in all respects. Prepared March 2024. These are representations as to future matters based on an honest and reasonable view currently held by the vendor but what is represented is subject to planning and other approvals which may change.

ANCORA
LEVEL 17

APT NO.	INTERNAL	BALCONY	TOTAL
1701A	50M ²	9M ²	59M ²
1702A	82M ²	9M ²	91M ²
1703A	90M ²	8M ²	98M ²
1704A	74M ²	8M ²	82M ²
1705A	89M ²	8M ²	97M ²
1706A	134M ²	15M ²	149M ²
1707A	105M ²	8M ²	113M ²
1708A	53M ²	9M ²	62M ²



COLLINS

MELBOURNE

WHARF

REALISED BY

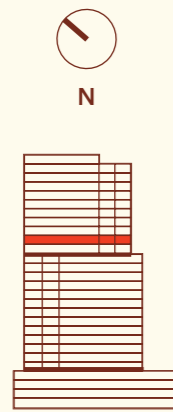


Disclaimer: These are preliminary, indicative floor plans not drawn to scale and are subject to planning and other approvals. Please note that these floor plans were produced prior to completion of construction. Any measurements shown are calculated in accordance with the relevant method of measurement published by the Property Council of Australia. Location and extent of solid façade elements, apartment dimensions, floor and apartment layouts, levels, designs, diagrams, structures, configurations, and ratios of different configurations, tile set-out, areas, fittings, finishes and specifications are approximate only and subject to change without notice in accordance with the provisions of the Contract of Sale or where required for compliance, planning, building regulations, other laws or for any other reason. The furniture is not included with any sale unless otherwise disclosed in the Contract for Sale. Prospective purchasers must make and only rely on their own assessments and seek their own professional advice in all respects. Prepared March 2024. These are representations as to future matters based on an honest and reasonable view currently held by the vendor but what is represented is subject to planning and other approvals which may change.

ANCORA

LEVEL 18

APT NO.	INTERNAL	BALCONY	TOTAL
1801A	50M ²	9M ²	59M ²
1802A	82M ²	9M ²	91M ²
1803A	90M ²	8M ²	98M ²
1804A	74M ²	8M ²	82M ²
1805A	89M ²	8M ²	97M ²
1806A	134M ²	15M ²	149M ²
1807A	105M ²	8M ²	113M ²
1808A	53M ²	9M ²	62M ²



COLLINS

MELBOURNE

WHARF

REALISED BY

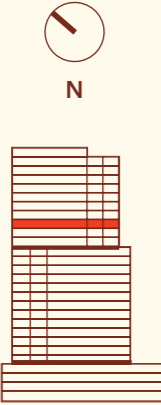


Disclaimer: These are preliminary, indicative floor plans not drawn to scale and are subject to planning and other approvals. Please note that these floor plans were produced prior to completion of construction. Any measurements shown are calculated in accordance with the relevant method of measurement published by the Property Council of Australia. Location and extent of solid façade elements, apartment dimensions, floor and apartment layouts, levels, designs, diagrams, structures, configurations, and ratios of different configurations, tile set-out, areas, fittings, finishes and specifications are approximate only and subject to change without notice in accordance with the provisions of the Contract of Sale or where required for compliance, planning, building regulations, other laws or for any other reason. The furniture is not included with any sale unless otherwise disclosed in the Contract for Sale. Prospective purchasers must make and only rely on their own assessments and seek their own professional advice in all respects. Prepared March 2024. These are representations as to future matters based on an honest and reasonable view currently held by the vendor but what is represented is subject to planning and other approvals which may change.

ANCORA

LEVEL 19

APT NO.	INTERNAL	BALCONY	TOTAL
1901A	50M ²	9M ²	59M ²
1902A	82M ²	9M ²	91M ²
1903A	90M ²	8M ²	98M ²
1904A	74M ²	8M ²	82M ²
1905A	89M ²	8M ²	97M ²
1906A	134M ²	15M ²	149M ²
1907A	105M ²	8M ²	113M ²
1908A	53M ²	9M ²	62M ²



COLLINS

MELBOURNE

WHARF

REALISED BY

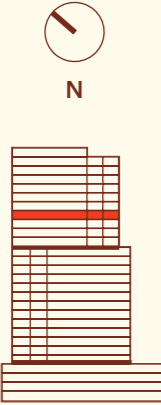


Disclaimer: These are preliminary, indicative floor plans not drawn to scale and are subject to planning and other approvals. Please note that these floor plans were produced prior to completion of construction. Any measurements shown are calculated in accordance with the relevant method of measurement published by the Property Council of Australia. Location and extent of solid façade elements, apartment dimensions, floor and apartment layouts, levels, designs, diagrams, structures, configurations, and ratios of different configurations, tile set-out, areas, fittings, finishes and specifications are approximate only and subject to change without notice in accordance with the provisions of the Contract of Sale or where required for compliance, planning, building regulations, other laws or for any other reason. The furniture is not included with any sale unless otherwise disclosed in the Contract for Sale. Prospective purchasers must make and only rely on their own assessments and seek their own professional advice in all respects. Prepared March 2024. These are representations as to future matters based on an honest and reasonable view currently held by the vendor but what is represented is subject to planning and other approvals which may change.

ANCORA

LEVEL 20

APT NO.	INTERNAL	BALCONY	TOTAL
2001A	50M ²	9M ²	59M ²
2002A	82M ²	9M ²	91M ²
2003A	90M ²	8M ²	98M ²
2004A	74M ²	8M ²	82M ²
2005A	89M ²	8M ²	97M ²
2006A	134M ²	15M ²	149M ²
2007A	105M ²	8M ²	113M ²
2008A	53M ²	9M ²	62M ²



COLLINS

MELBOURNE

WHARF

REALISED BY

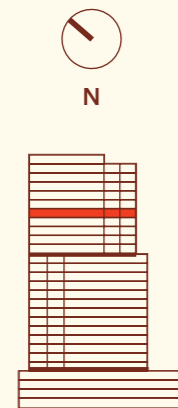


Disclaimer: These are preliminary, indicative floor plans not drawn to scale and are subject to planning and other approvals. Please note that these floor plans were produced prior to completion of construction. Any measurements shown are calculated in accordance with the relevant method of measurement published by the Property Council of Australia. Location and extent of solid façade elements, apartment dimensions, floor and apartment layouts, levels, designs, diagrams, structures, configurations, and ratios of different configurations, tile set-out, areas, fittings, finishes and specifications are approximate only and subject to change without notice in accordance with the provisions of the Contract of Sale or where required for compliance, planning, building regulations, other laws or for any other reason. The furniture is not included with any sale unless otherwise disclosed in the Contract for Sale. Prospective purchasers must make and only rely on their own assessments and seek their own professional advice in all respects. Prepared March 2024. These are representations as to future matters based on an honest and reasonable view currently held by the vendor but what is represented is subject to planning and other approvals which may change.

ANCORA

LEVEL 21

APT NO.	INTERNAL	BALCONY	TOTAL
2101A	50M ²	9M ²	59M ²
2102A	82M ²	9M ²	91M ²
2103A	90M ²	8M ²	98M ²
2104A	74M ²	8M ²	82M ²
2105A	89M ²	8M ²	97M ²
2106A	134M ²	15M ²	149M ²
2107A	105M ²	8M ²	113M ²
2108A	53M ²	9M ²	62M ²



COLLINS

MELBOURNE

WHARF

REALISED BY

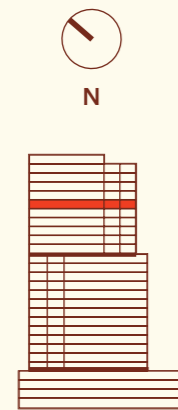


Disclaimer: These are preliminary, indicative floor plans not drawn to scale and are subject to planning and other approvals. Please note that these floor plans were produced prior to completion of construction. Any measurements shown are calculated in accordance with the relevant method of measurement published by the Property Council of Australia. Location and extent of solid façade elements, apartment dimensions, floor and apartment layouts, levels, designs, diagrams, structures, configurations, and ratios of different configurations, tile set-out, areas, fittings, finishes and specifications are approximate only and subject to change without notice in accordance with the provisions of the Contract of Sale or where required for compliance, planning, building regulations, other laws or for any other reason. The furniture is not included with any sale unless otherwise disclosed in the Contract for Sale. Prospective purchasers must make and only rely on their own assessments and seek their own professional advice in all respects. Prepared March 2024. These are representations as to future matters based on an honest and reasonable view currently held by the vendor but what is represented is subject to planning and other approvals which may change.

ANCORA

LEVEL 22

APT NO.	INTERNAL	BALCONY	TOTAL
2201A	50M ²	9M ²	59M ²
2202A	82M ²	9M ²	91M ²
2203A	90M ²	8M ²	98M ²
2204A	74M ²	8M ²	82M ²
2205A	89M ²	8M ²	97M ²
2206A	134M ²	15M ²	149M ²
2207A	105M ²	8M ²	113M ²
2208A	53M ²	9M ²	62M ²



COLLINS

MELBOURNE

WHARF

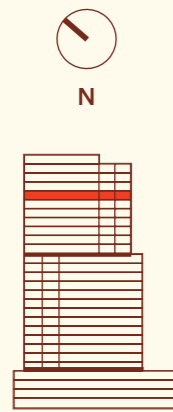
REALISED BY



Disclaimer: These are preliminary, indicative floor plans not drawn to scale and are subject to planning and other approvals. Please note that these floor plans were produced prior to completion of construction. Any measurements shown are calculated in accordance with the relevant method of measurement published by the Property Council of Australia. Location and extent of solid façade elements, apartment dimensions, floor and apartment layouts, levels, designs, diagrams, structures, configurations, and ratios of different configurations, tile set-out, areas, fittings, finishes and specifications are approximate only and subject to change without notice in accordance with the provisions of the Contract of Sale or where required for compliance, planning, building regulations, other laws or for any other reason. The furniture is not included with any sale unless otherwise disclosed in the Contract for Sale. Prospective purchasers must make and only rely on their own assessments and seek their own professional advice in all respects. Prepared March 2024. These are representations as to future matters based on an honest and reasonable view currently held by the vendor but what is represented is subject to planning and other approvals which may change.

ANCORA
LEVEL 23

APT NO.	INTERNAL	BALCONY	TOTAL
2301A	50M ²	9M ²	59M ²
2302A	82M ²	9M ²	91M ²
2303A	90M ²	8M ²	98M ²
2304A	74M ²	8M ²	82M ²
2305A	89M ²	8M ²	97M ²
2306A	134M ²	15M ²	149M ²
2307A	105M ²	8M ²	113M ²
2308A	53M ²	9M ²	62M ²



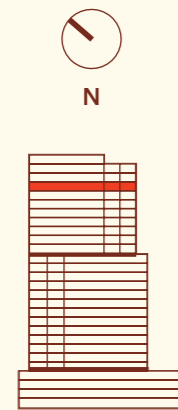
COLLINS
MELBOURNE
WHARF

REALISED BY 

Disclaimer: These are preliminary, indicative floor plans not drawn to scale and are subject to planning and other approvals. Please note that these floor plans were produced prior to completion of construction. Any measurements shown are calculated in accordance with the relevant method of measurement published by the Property Council of Australia. Location and extent of solid façade elements, apartment dimensions, floor and apartment layouts, levels, designs, diagrams, structures, configurations, and ratios of different configurations, tile set-out, areas, fittings, finishes and specifications are approximate only and subject to change without notice in accordance with the provisions of the Contract of Sale or where required for compliance, planning, building regulations, other laws or for any other reason. The furniture is not included with any sale unless otherwise disclosed in the Contract for Sale. Prospective purchasers must make and only rely on their own assessments and seek their own professional advice in all respects. Prepared March 2024. These are representations as to future matters based on an honest and reasonable view currently held by the vendor but what is represented is subject to planning and other approvals which may change.

ANCORA
LEVEL 24

APT NO.	INTERNAL	BALCONY	TOTAL
2401A	50M ²	9M ²	59M ²
2402A	82M ²	9M ²	91M ²
2403A	90M ²	8M ²	98M ²
2404A	74M ²	8M ²	82M ²
2405A	89M ²	8M ²	97M ²
2406A	134M ²	15M ²	149M ²
2407A	105M ²	8M ²	113M ²
2408A	53M ²	9M ²	62M ²



COLLINS

MELBOURNE

WHARF

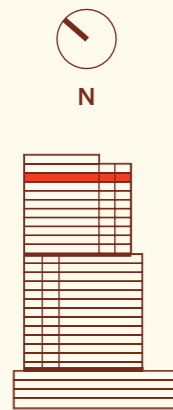
REALISED BY



Disclaimer: These are preliminary, indicative floor plans not drawn to scale and are subject to planning and other approvals. Please note that these floor plans were produced prior to completion of construction. Any measurements shown are calculated in accordance with the relevant method of measurement published by the Property Council of Australia. Location and extent of solid façade elements, apartment dimensions, floor and apartment layouts, levels, designs, diagrams, structures, configurations, and ratios of different configurations, tile set-out, areas, fittings, finishes and specifications are approximate only and subject to change without notice in accordance with the provisions of the Contract of Sale or where required for compliance, planning, building regulations, other laws or for any other reason. The furniture is not included with any sale unless otherwise disclosed in the Contract for Sale. Prospective purchasers must make and only rely on their own assessments and seek their own professional advice in all respects. Prepared March 2024. These are representations as to future matters based on an honest and reasonable view currently held by the vendor but what is represented is subject to planning and other approvals which may change.

ANCORA
LEVEL 25

APT NO.	INTERNAL	BALCONY	TOTAL
2501A	50M ²	9M ²	59M ²
2502A	82M ²	9M ²	91M ²
2503A	90M ²	8M ²	98M ²
2504A	74M ²	8M ²	82M ²
2505A	89M ²	8M ²	97M ²
2506A	134M ²	15M ²	149M ²
2507A	105M ²	8M ²	113M ²
2508A	53M ²	9M ²	62M ²



COLLINS

MELBOURNE

WHARF

REALISED BY



Disclaimer: These are preliminary, indicative floor plans not drawn to scale and are subject to planning and other approvals. Please note that these floor plans were produced prior to completion of construction. Any measurements shown are calculated in accordance with the relevant method of measurement published by the Property Council of Australia. Location and extent of solid façade elements, apartment dimensions, floor and apartment layouts, levels, designs, diagrams, structures, configurations, and ratios of different configurations, tile set-out, areas, fittings, finishes and specifications are approximate only and subject to change without notice in accordance with the provisions of the Contract of Sale or where required for compliance, planning, building regulations, other laws or for any other reason. The furniture is not included with any sale unless otherwise disclosed in the Contract for Sale. Prospective purchasers must make and only rely on their own assessments and seek their own professional advice in all respects. Prepared March 2024. These are representations as to future matters based on an honest and reasonable view currently held by the vendor but what is represented is subject to planning and other approvals which may change.

ANCORA
LEVEL 26

APT NO.	INTERNAL	BALCONY	TOTAL
2601A	50M ²	9M ²	59M ²
2602A	82M ²	9M ²	91M ²
2603A	187M ²	28M ²	215M ²
2604A	154M ²	21M ²	175M ²
2605A	159M ²	16M ²	175M ²
2606A	146M ²	23M ²	169M ²
2607A	207M ²	36M ²	243M ²
2608A	105M ²	8M ²	113M ²
2609A	53M ²	9M ²	62M ²



COLLINS

MELBOURNE

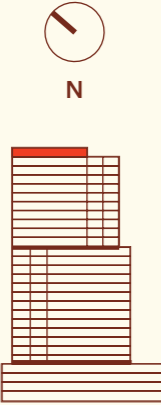
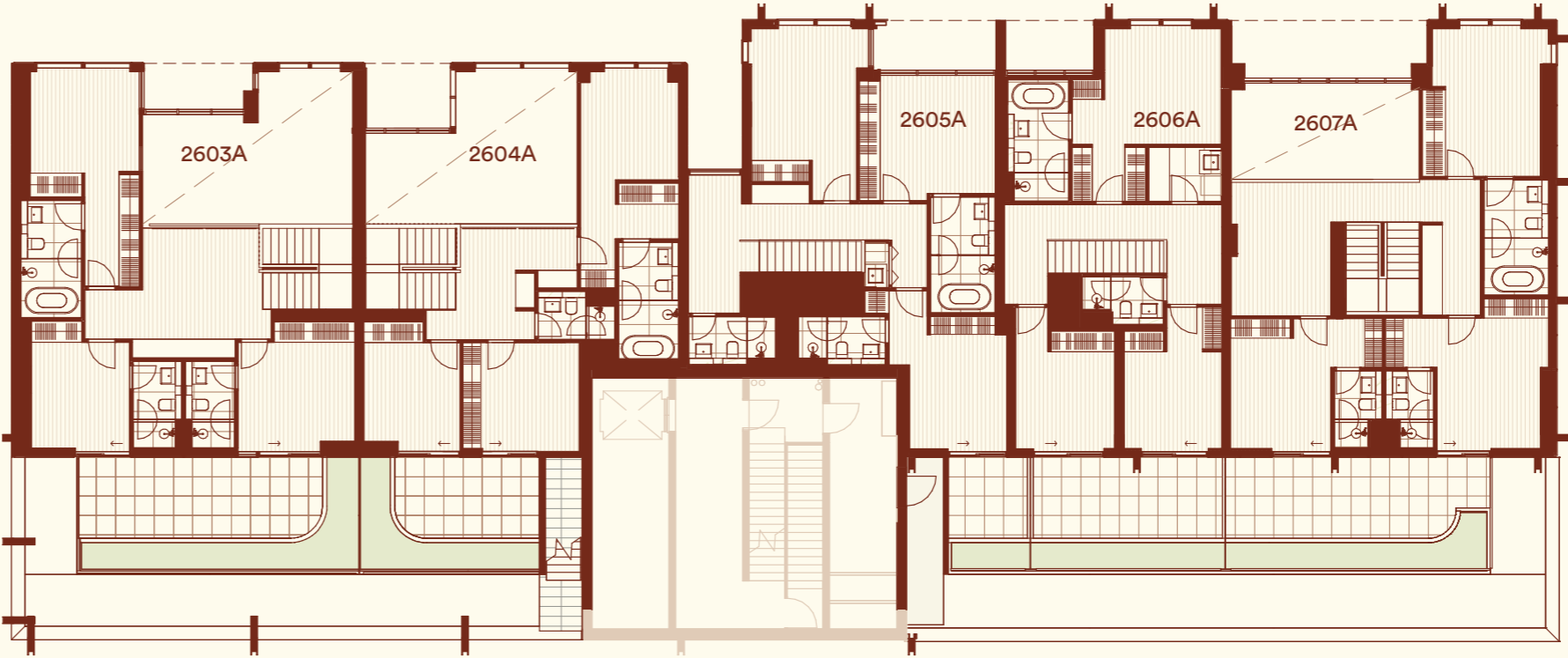
WHARF

REALISED BY



Disclaimer: These are preliminary, indicative floor plans not drawn to scale and are subject to planning and other approvals. Please note that these floor plans were produced prior to completion of construction. Any measurements shown are calculated in accordance with the relevant method of measurement published by the Property Council of Australia. Location and extent of solid façade elements, apartment dimensions, floor and apartment layouts, levels, designs, diagrams, structures, configurations, and ratios of different configurations, tile set-out, areas, fittings, finishes and specifications are approximate only and subject to change without notice in accordance with the provisions of the Contract of Sale or where required for compliance, planning, building regulations, other laws or for any other reason. The furniture is not included with any sale unless otherwise disclosed in the Contract for Sale. Prospective purchasers must make and only rely on their own assessments and seek their own professional advice in all respects. Prepared March 2024. These are representations as to future matters based on an honest and reasonable view currently held by the vendor but what is represented is subject to planning and other approvals which may change.

ANCORA
LEVEL 27



COLLINS
MELBOURNE
WHARF

REALISED BY 

Disclaimer: These are preliminary, indicative floor plans not drawn to scale and are subject to planning and other approvals. Please note that these floor plans were produced prior to completion of construction. Any measurements shown are calculated in accordance with the relevant method of measurement published by the Property Council of Australia. Location and extent of solid façade elements, apartment dimensions, floor and apartment layouts, levels, designs, diagrams, structures, configurations, and ratios of different configurations, tile set-out, areas, fittings, finishes and specifications are approximate only and subject to change without notice in accordance with the provisions of the Contract of Sale or where required for compliance, planning, building regulations, other laws or for any other reason. The furniture is not included with any sale unless otherwise disclosed in the Contract for Sale. Prospective purchasers must make and only rely on their own assessments and seek their own professional advice in all respects. Prepared March 2024. These are representations as to future matters based on an honest and reasonable view currently held by the vendor but what is represented is subject to planning and other approvals which may change.

REALISED BY LENDLEASE

INCLUSIONS



SCHEDULE OF INCLUSIONS

Building External Envelope	Walls	Aluminium frame and glass façade system
	Windows	Aluminium powder-coated frames
	Roof	Podium roof – pavers & ballast
	Balconies / Terraces	Tiles or pavers and painted concrete soffit Metal and glass balustrades (with solid upturn where applicable)
	Carpark	Concrete floors Overhead lighting Automated carpark entry
Living / Dining	Flooring	Engineered timber flooring
	Walls / Ceiling	Painted plasterboard
Kitchen	Flooring	Engineered timber flooring
	Walls / Ceiling	Painted plasterboard
	Benchtop	Sintered stone
	Splashback	Sintered stone
	Cupboards	Melamine finish
	Handles	Recessed finger pulls to drawers and cupboards
	Tapware	Single lever kitchen mixer WELS 4 Star (7L/min)
	Sink – One bed apartments & Two bed one bath apartments	Single bowl stainless steel sink, under mounted
	Sink – Two bed, two bath apartments	1.3 bowl stainless steel sink, under mounted
	Sink – Three bed apartments	2 bowl stainless steel sink, under mounted
	Bin	Twin bin in cupboard under sink
	Dishwasher	Miele fully integrated dishwasher WELS 6 Star (9.2L/usage)
	Oven	Miele oven (600mm)
Cooktop - One bed apartments & Two bed apartments	Miele induction cooktop (approx. 574mm)	
Cooktop - Three bed apartments	Miele induction cooktop (approx. 800mm)	
Microwave - Three bed apartments only	Miele microwave oven included (600mm)	
Rangehood	European concealed rangehood (ducted externally)	
Fridge	Not included – by purchaser (cavity only)	

Walk-In Laundry/Pantry (where applicable, in lieu of Laundry)	Flooring and skirting	Vitrified tiles
	Walls / Ceiling	Painted plasterboard
	Benchtop	Sintered stone
	Splashback	Sintered stone
	Cupboards	Melamine finish
	Handles	Recessed finger pulls to drawers and cupboards
	Tapware	Single lever kitchen mixer WELS 4 Star (7L/min)
Sink	Single bowl stainless steel sink, under mounted	
Bathroom / Ensuite (where applicable)	Flooring	Vitrified tiles
	Walls	Vitrified tiles
	Ceilings	Painted plasterboard
	Splashback	Vitrified tiles
	Mirrors	Mirrored glass fronted shaving cabinet
	Basin	Wall hung ceramic basin
	Tapware	Chrome finish Basin Mixer WELS 6 Star (3.5L/m) Shower WELS 4 Star (6.5L/m)
	Toilet	Ceramic with concealed cistern WELS 4 star (3.3L/flush)
	Shower	Glazed frameless shower screen enclosure and vitrified tiles
	Bathroom accessories	Chrome finish towel rail, toilet roll holder, robe hook and shower shelf
Bath (where applicable)	Enamel under slung bath with reconstituted stone surrounds	
Bedrooms	Flooring	Engineered timber flooring
	Walls / Ceilings	Painted plasterboard
	Built in robes	Mirror sliding doors with melamine shelf and hanging rail
Laundry	Floors and skirting	Vitrified tiles
	Walls / Ceiling	Painted plasterboard
	Splashback	Ceramic tiles to tub only
	Tapware	Chrome finish WELS 5 Star (5L/min)
	Laundry tub	Stainless steel sink and metal cabinet
	Laundry doors	Melamine doors for laundry cupboards
	Washer / Dryer	Not included – by purchaser

General	Entry door	Fire rated door with painted finish
	Internal doors	Painted finish
	Skirting	Painted finish
	Linen cupboard (where applicable)	Melamine finish doors with melamine interiors
	Electrical and Communications	General lighting
Electrical and Communications	TV point	Wired for free to air and pay TV One TV point in living room One TV point in main bedroom
	Telephone / data point	One double data point in living room One single data point at ONT & study (if applicable)
	Switchboard	RCD protection for lighting and power circuits
	Security	Proximity card/FOB access to building and automated car park entry door Video intercom Keyless entry to entry door
Electrical and Communications (Exclusions)	Internet service	Commissioning of internet service provider (ISP) – by purchaser
	TV service	Commissioning of Foxtel or any other pay TV provider – by purchaser
	Telephone service	Commissioning of telephone service provider – by purchaser
General Building Services	Exhaust	Dedicated kitchen rangehood Bathroom and laundry exhaust (ducted externally)
Heating and Cooling	One bedroom apartments	Concealed air conditioning to living area only Condenser in separate plant area
	Two & three bedroom apartments	Concealed air conditioning to living area and master bedroom only
Hot Water		Centralised hot water unit
Cold Water		Individually metered in common cupboard

REALISED BY





Disclaimer: The material contained in this brochure has been produced prior to completion of detailed design and construction of Collins Wharf. The development and construction of Collins Wharf is subject to planning approval and may be subject to change. As such, this material does not constitute a representation by the Developer, Vendor or the Agent in respect of the actual size, form, dimensions, specifications or layout of the apartments or other parts of the building. Lendlease does not accept responsibility for any action taken by intending purchasers in reliance on the information in this brochure. The final product may vary from the images shown. Images are artist's impressions only and furniture is not included unless otherwise stated in the contract for sale. Any view lines shown are indicative only as at the date of publication. Actual views from each apartment may vary on completion from that shown. View lines may be impacted by current and future development applications. Changes may be made during development and construction in accordance with the provisions of the contract for sale or planning or authority requirements. Prospective purchasers must make and rely on their own enquiries. Produced by Lendlease Development Pty Ltd April 2024.