



LIVE
CENTRE
STAGE

WELCOME TO ARIA,
A LIVING MASTERPIECE
WHERE ARTISTIC
INSPIRATION AND MODERN
ELEGANCE COMBINE IN
PERFECT HARMONY.

Conceived and delivered by Evolve Development and Hayball Architects, Aria's sophisticated design represents a new era in luxury apartment living, guided by a commitment to innovation, quality, and precise attention to detail.

Spanning 18 levels, Aria boasts an exquisite collection of one, two and three bedroom apartments – each offering exceptional comfort and access to an unmatched lifestyle in one of the world's most captivating cities.



LOCATION

RAISE THE CURTAIN ON AN UNPARALLELED LIFESTYLE



SURROUNDED BY ICONIC LANDMARKS, WORLD RENOWNED GALLERIES AND AWARD-WINNING RESTAURANTS, YOUR SENSES WILL BE AWAKENED AS YOU ENJOY AN ENDLESS TAPESTRY OF ENRICHING AND CAPTIVATING MOMENTS.

Nestled in the heart of Melbourne's sought-after Arts Precinct, right on the edge of the bustling CBD and alongside the splendid Royal Botanic Gardens, Aria boasts an enviable location. Immerse yourself in the charm of Melbourne's esteemed Arts Precinct, just steps away from the Malthouse Theatre for a captivating matinee or lose yourself in the latest Arts Centre performance. Marvel at the boundless creativity on display at the National Gallery of Victoria, where visionary exhibitions and galleries beckon at every twist and turn.

Take a leisurely stroll along the picturesque banks of the majestic Yarra River, leading to the lush landscapes of the Royal Botanic Gardens. Here, you can lounge on the expansive lawns of the Sidney Myer Music Bowl, traverse Melbourne's iconic Tan Track at your own pace, or treat yourself to a delightful aperitivo at the Botanical Hotel. The possibilities are as diverse as your desires.

South Melbourne Market is where Melbourne's culinary spirit thrives. The vibrant, bustling haven where fresh produce and artisan stalls tempt you with international flavours are all waiting to be explored.

Indulge in your heart's desires, whether it's the haute couture of Collins Street or the trendy fashion finds at the Emporium, a world of style unfolds effortlessly at your feet and is within easy reach via tram.

Descend into the depths of flavor at Dessous subterranean bar and restaurant, savor intimate moments at Kisume or elevate your dining experience at Osteria Ilaria, known for its delectable Italian fare. As darkness falls, Melbourne's hidden bars come alive, promising an evening of enchantment and discovery that goes beyond the ordinary.



EUREKA SKYDECK

MELBOURNE CBD

FLINDERS ST STATION

FEDERATION SQUARE

ARTS CENTRE MELBOURNE

NATIONAL GALLERY OF VICTORIA

ARIA

ROYAL BOTANIC GARDENS

ST KILDA RD

ROD LAVER ARENA

MELBOURNE CRICKET GROUND





CLOCKWISE FROM TOP
 NATIONAL GALLERY OF AUSTRALIA
 MALTHOUSE THEATRE
 AUSTRALIAN CENTRE FOR CONTEMPORARY ART

CLOCKWISE FROM TOP LEFT
 HAMER HALL
 SOUTHBANK PROMENADE
 PONYFISH ISLAND



CLOCKWISE FROM TOP
 YARRA RIVER
 ROYAL BOTANIC GARDENS
 THE TAN TRACK









RESTAURANT / CAFÉ / BAR

1. Degraeves Street Café
2. Chin Chin
3. Lucy Liu
4. Garden State Hotel
5. Asado
6. Saké
7. Arbory
8. Peko Peko
9. The Meat & Wine Co
10. 8 Miles Café
11. Rockpool
12. Jardin Tan
13. Taxi Kitchen
14. Dessous
15. Kisume
16. Pony Fish Island
17. Osteria Ilaria

ARTS AND CULTURE

18. Melbourne Convention Centre
19. Crown
20. Sea Life Aquarium
21. Immigration Museum
22. Queensbridge Square
23. Melbourne Skydeck
24. Regent Theatre
25. Old Treasury Building
26. The Forum
27. ACMI
28. NGV National
29. Federation Square
30. Art Centre Melbourne
31. NGV International
32. Melbourne Symphony Orchestra
33. Melbourne Recital Centre
34. ACCA
35. Malthouse Theatre
36. Sidney Myer Music Bowl
37. Melbourne Theatre Co.
38. Shrine of Remembrance
39. Melbourne Observatory
40. Government House
41. Victoria Barracks
42. Hamer Hall
43. Southbank Promenade

SPORT / OUTDOOR / ACTIVE

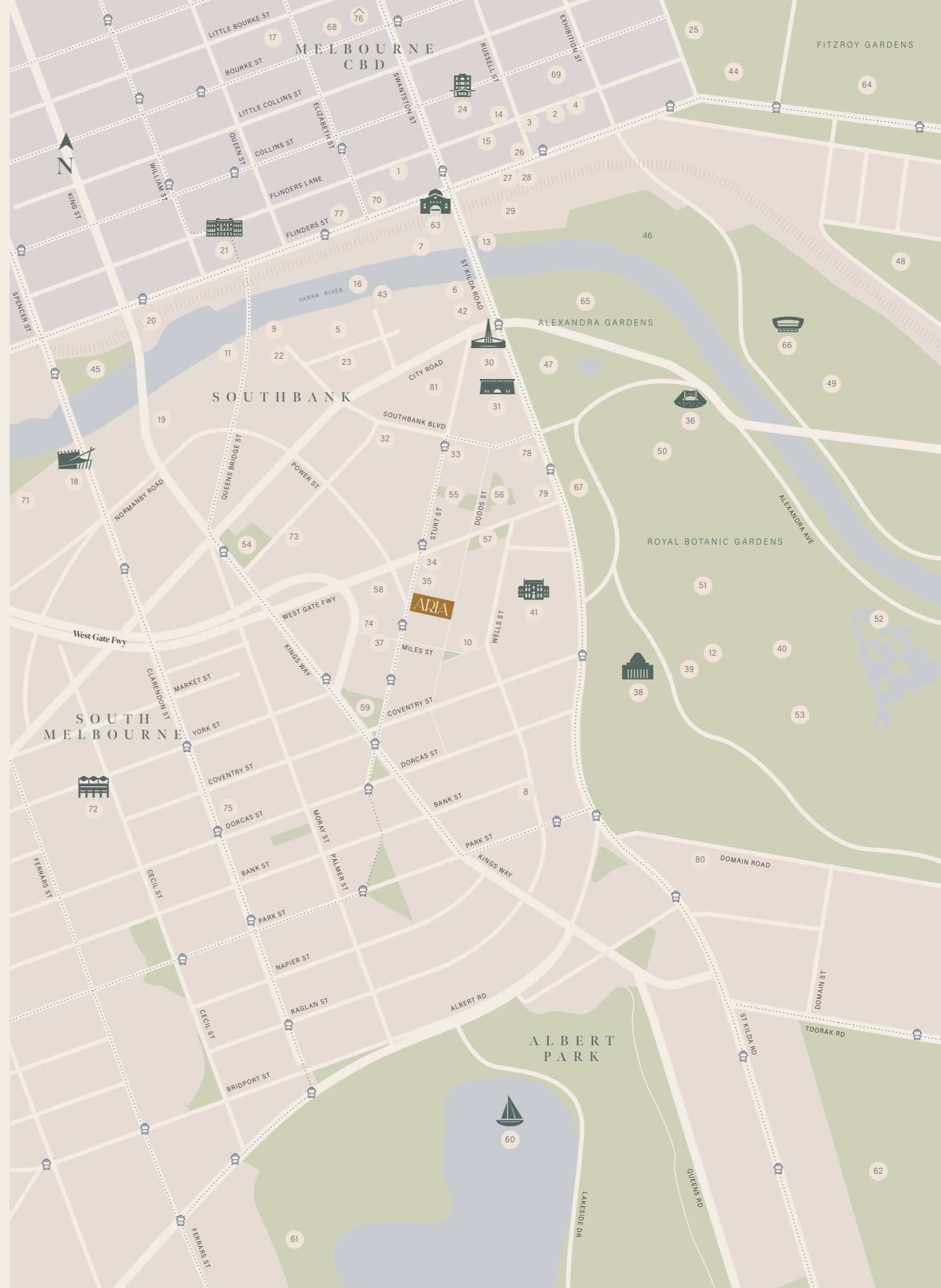
44. Treasury Gardens
45. Batman Park
46. Birrarung Marr
47. Queen Victoria Gardens
48. MCG
49. Melbourne Park
50. Kings Domain
51. Royal Botanic Gardens
52. Fountain Island
53. Tropical Glasshouse
54. Boyd Park
55. Linear Park
56. Southbank Gardens
57. Grant St Reserve Playground
58. Habitat Filter
59. Sturt St Reserve
60. Albert Park Lake
61. Melbourne Sports Centres - MSAC
62. Fawkner Park
63. Flinders St Station
64. Fitzroy Gardens
65. Alexandra Gardens
66. Rod Laver Arena
67. The Tan

SHOPPING

68. Bourke Street Mall
69. Collins St Shopping Precinct
70. Coles, Southbank
71. DFO
72. South Melbourne Market
73. Woolworths & BWS, Southbank
74. Chemist Warehouse
75. Coles, South Melbourne
76. Emporium Melbourne

EDUCATION

77. Victoria University
78. University of Melbourne Southbank
79. VCA
80. Melbourne Grammar School
81. Australian Ballet School



ENTER ARIA

ARCHITECTURAL ARTISTRY





FOR AN UNRIVALLED LIFESTYLE, COME HOME TO ARIA.

Exquisitely crafted and awe-inspiring in its vision, Aria stands as a masterpiece of architectural artistry. Each one, two, and three-bedroom apartment within its walls embodies a flawless fusion of form and function, conscientiously planned to optimise panoramic city vistas and embrace the seamless flow of modern living.

Impeccably curated, Aria boasts thoughtfully designed communal spaces and a dedicated art exhibition area, creating an ambience perfect for relaxation and entertainment.

Beneath starlit evenings or sun-drenched afternoons, the expansive outdoor terrace beckons. Whether you choose to entertain in the alfresco kitchen, socialise in versatile leisure spaces, or simply unwind under the sun's warm embrace, the possibilities are boundless. On Level 4, a state-of-the-art chef's kitchen, along with a private dining room and lounge, also sets the stage for the ideal soirée.

The fully equipped on-site gymnasium offers a serene atmosphere. The architecturally designed infinity pool, operational throughout the seasons, promises breathtaking city views worthy of a standing ovation.

Open seven days a week, Aria's concierge is your personal facilitator, from assisting with your move-in and handling parcel deliveries to coordinating resident events and arranging for a personal masseuse. They bring a suite of services right to your doorstep, ensuring you feel completely at home.













APARTMENTS

THE STAGE IS SET



STEP INTO THE WORLD OF ARIA, A STUNNING MASTERPIECE FUELLED BY ASPIRING CREATIVITY.

Aria presents two distinct apartment styles, the Aria Collection and the Masters Collection, each offering a selection of curated interior schemes that capture the essence of modern elegance. These designs, thoughtfully anchored by natural materials and refined finishes, serve to create a harmonious and inviting atmosphere within your home.

The Aria Collection embodies a contemporary aesthetic, with streamlined interiors that exude a sense of understated sophistication. Sleek lines, neutral tones, and expansive windows create a sense of openness and connection to the surrounding cityscape.

The Masters Collection embraces a timeless elegance, with rich textures, opulent finishes, and classic design elements that evoke a sense of grandeur.

Whether you gravitate towards the contemporary allure of the Aria Collection or the timeless elegance of the Masters Collection, Aria offers a haven of refined luxury, where every detail is thoughtfully crafted to elevate your everyday living to an art form.



THE ARIA COLLECTION

IMMERSE YOURSELF
IN THE UNPARALLELED
SOPHISTICATION WHERE
LUXURY MEETS YOUR
PERSONAL STYLE.

The Aria Collection's one and two-bedroom apartments set an unparalleled standard for refined urban living.

Embarking on a fresh perspective of design efficiency, the emphasis is crystal clear: to elevate your experience within these luxurious spaces. Carefully selected designer tapware, purposeful joinery, and an array of high-quality textural materials seamlessly converge to create a space that effortlessly marries practicality with aesthetic delight.

Immerse yourself in the curated ambiance of the Aria Collection, where the choice between the serene Light and the atmospheric Dark colour palettes allows you to craft a residence that resonates with your distinctive style. This is not merely a dwelling; it is a canvas awaiting your personal touch, where every detail contributes to the harmonious blend of comfort and elegance.













THE MASTERS COLLECTION

A SYMPHONY OF
 OPULENCE AND REFINED
 AESTHETICS CREATES A
 WORLD OF UNWAVERING
 COMMITMENT TO ARTISTIC
 BRILLIANCE.

The Masters Collection unveils an artisanally designed sanctuary of refinement, showcasing two and three-bedroom apartments that redefine the essence of apartment living. This collection goes the extra mile, offering the luxury of two private secure carparks.

Enter a domain where design harmoniously integrates with functionality. Each interior scheme, available in Light or Dark palettes, incorporates all-natural stone to elevate your living space. Exclusive to the Masters Collection is the Drama scheme—a theatrical fusion of striking stone selections and elegant brass tapware.

Indulge in panoramic views of Australia's cultural capital from the unparalleled comfort of your Masters Collection home. The kitchens stand as a testament to exquisite design, boasting monolithic island benches, waterfall edges, and shadow line details that underscore an unwavering commitment to design brilliance. Breakfast bars, adorned with natural stone benchtops and cleverly concealed details behind pocket doors, offer a seamless blend of style and convenience. Large fully-integrated fridges and 90cm European cooking appliances ensure ample capacity, whether you're entertaining or catering to a full-sized family.

The generous space within invites you to linger, appreciating the meticulous craftsmanship and the radiant design of your home. Entry joinery, featuring key drops and mirrors framed with natural stone portals, creates an inviting sense of arrival. Double vanity ensuite seamlessly flow into lavishly proportioned wardrobes and bedrooms, providing a stunning backdrop to your daily retreat. Solid surface bathtubs, full-height wall tiles, fluted glass, and feature storage combine to craft a space that emanates opulence and practicality—a sanctuary where luxury effortlessly meets functionality for a truly indulgent experience.







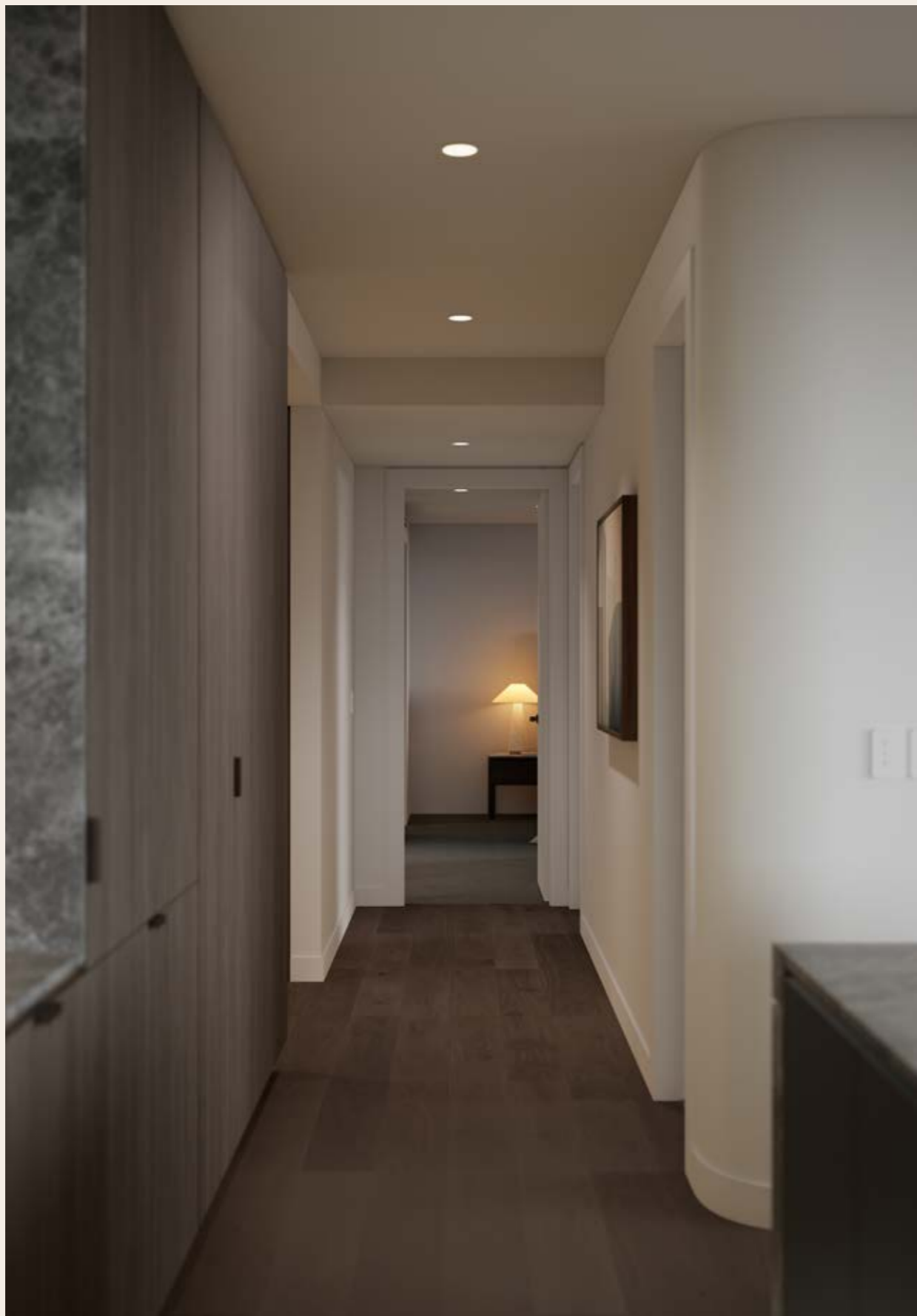
















CONCEIVED AND CREATED BY AN ACCOMPLISHED TEAM



Established in 2003, Evolve Development is a Melbourne-based company with a clear focus on creating unique living and working spaces.

With every new development comes the exciting challenge of creating something beautiful, functional and timeless. Evolve's projects are valued in excess of \$1 billion, yet the company remains a boutique

business that focuses on producing quality products and maintaining a commitment to excellence and innovation.

By bringing together the best minds in architecture and interior design, Evolve remains at the forefront of residential and commercial property development.



Hayball is convinced that the best design is the result of exploration, research, different ways of thinking and the open exchange of ideas. The team is inspired by every project's unique character and potential to make a civic difference. In the pursuit of exceptional and buildable design solutions, they focus not only on outcomes but also on high-quality professional services.

The meticulous and holistic framework through which Hayball investigates a brief is much more than a quality process. Harnessing expertise from many fields and disciplines, it involves listening deeply to the needs and ambitions of clients and critical

exploration to ensure that every outcome is born of the best creative and researched knowledge.

Hayball's directors are hands-on across the life of a project, and regularly invite other specialists to work with their team. At the heart of everything they do, the exchange of ideas and expertise with clients and partners is a dedication to design excellence and a spirit of genuine collaboration.



THE GUILFOYLE
39 COVENTRY ST, SOUTHBANK (VIC)

BOTANIC
25 COVENTRY ST, SOUTHBANK (VIC)

MONARC
74 QUEENS RD, MELBOURNE (VIC)



For over twenty years, Colliers Residential Victoria has been a leading force within the residential property industry, offering clients access to global networks and an unrivalled level of experience and knowledge.

With expertise spanning Build-To-Sell (Project Marketing), Build-To-Rent, Development Site Sales, Research and Strategic Advisory, the business has been involved in Melbourne's largest, most defining projects.

Colliers Residential Victoria has represented hundreds of developer clients, sold more than \$20 billion worth of apartments, helped pioneer the Build-To-Rent sector and maintained the Number One position in the development sites market with more than 30% market share.



Disclaimer: Whilst we endeavour to ensure the contents of this document are correct at the time of printing, the information it contains is to be used as a guide only. This document was completed prior to the completion of final design, engineering and construction of the project, therefore design, engineering, dimensions, fittings and specifications are subject to change. All areas are provided in accordance with the Method of Measurement for Residential Property provided by the Property Council of Australia.

© Created by Savi Communications 2024.

