

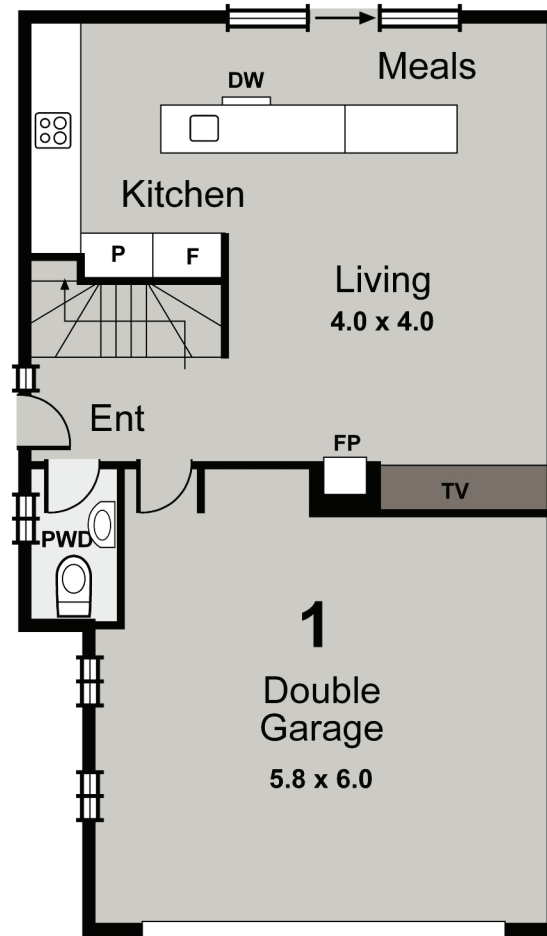
24 CARR STREET,
BRIGHTON EAST VIC 3187

UNIT 1

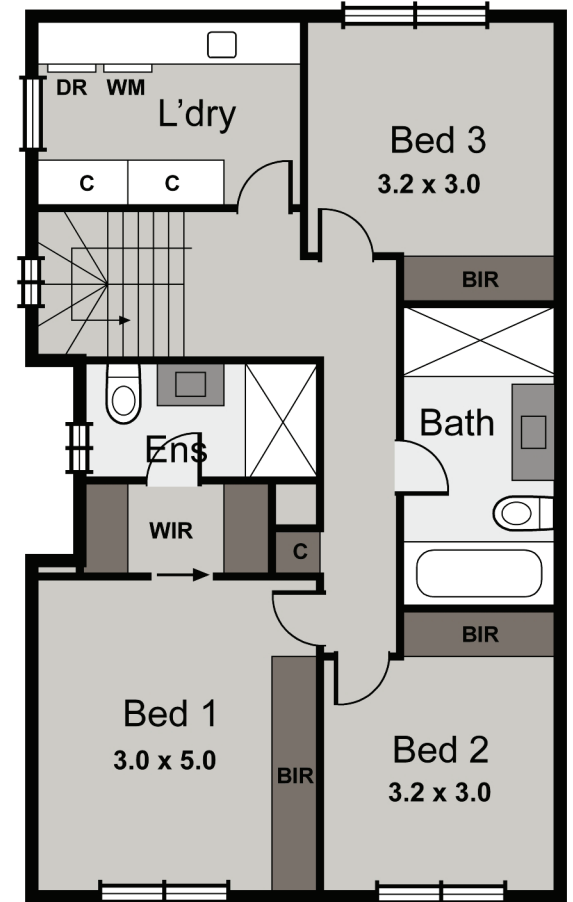
3 2.5 2

TOTAL AREA 17.4SQ / 161.5m²

LAND SIZE 209.1m²



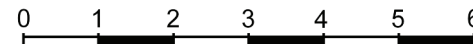
Ground Floor



First Floor

harcon

THIS DRAWING IS FOR ILLUSTRATIVE PURPOSES ONLY AND WHILE EVERY EFFORT HAS BEEN MADE TO MAINTAIN ACCURACY, PROSPECTIVE PURCHASERS SHOULD CHECK ALL INFORMATION



Scale in metres approx.

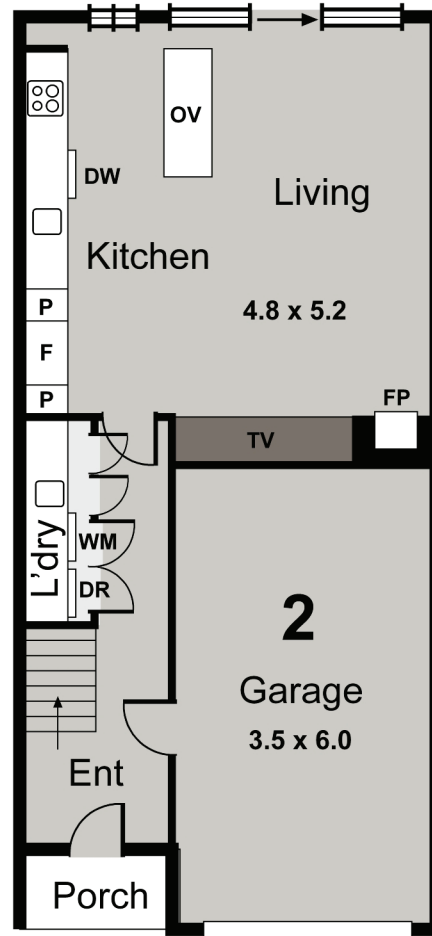
24 CARR STREET,
BRIGHTON EAST VIC 3187

UNIT 2

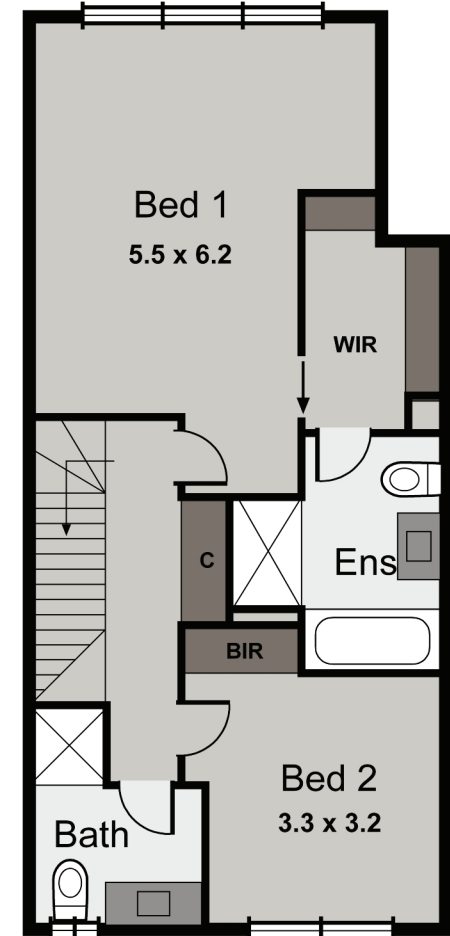
2 2 1

TOTAL AREA 14.45Q / 134m²

LAND SIZE 85.4m²



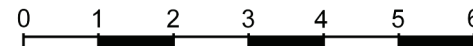
Ground Floor



First Floor

harcon

THIS DRAWING IS FOR ILLUSTRATIVE PURPOSES ONLY AND WHILE EVERY EFFORT HAS BEEN MADE TO MAINTAIN ACCURACY, PROSPECTIVE PURCHASERS SHOULD CHECK ALL INFORMATION



Scale in metres approx.

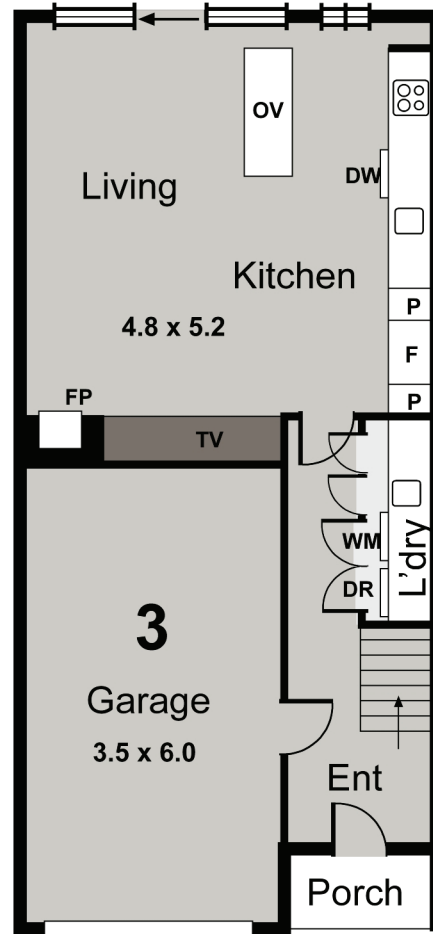
24 CARR STREET,
BRIGHTON EAST VIC 3187

UNIT 3

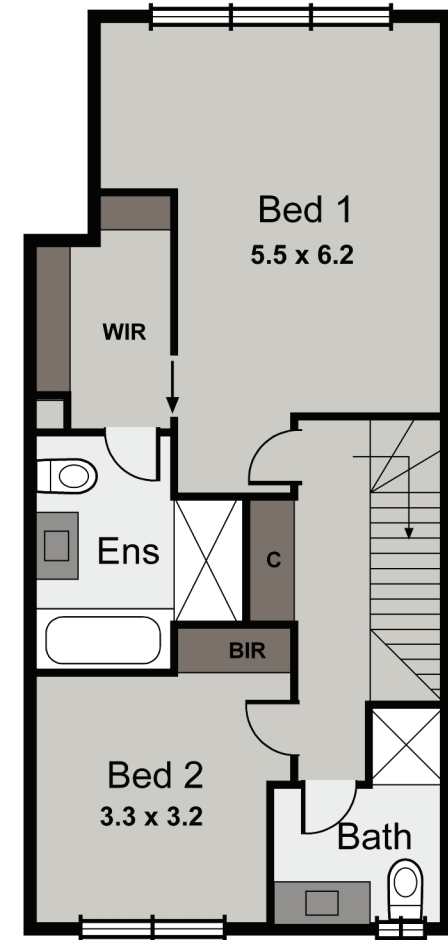
2 2 1

TOTAL AREA 14.45SQ / 133.9m²

LAND SIZE 85.4m²



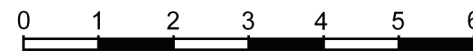
Ground Floor



First Floor

harcon

THIS DRAWING IS FOR ILLUSTRATIVE PURPOSES ONLY AND WHILE EVERY EFFORT HAS BEEN MADE TO MAINTAIN ACCURACY, PROSPECTIVE PURCHASERS SHOULD CHECK ALL INFORMATION



Scale in metres approx.

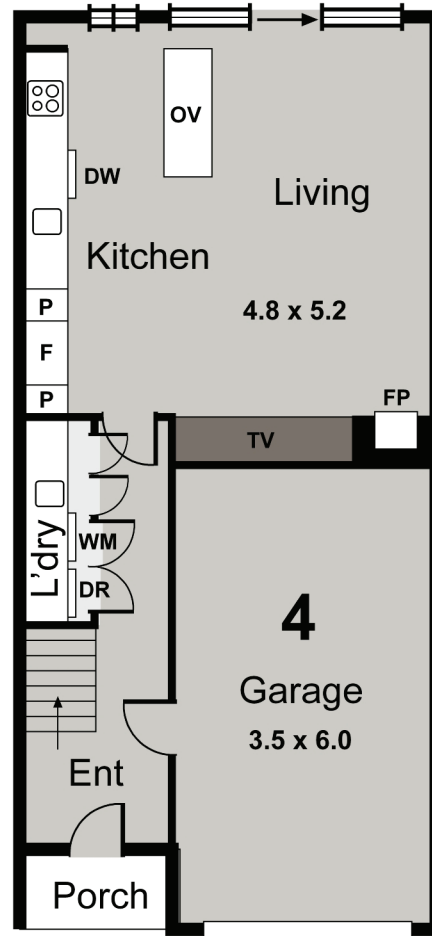
24 CARR STREET,
BRIGHTON EAST VIC 3187

UNIT 4

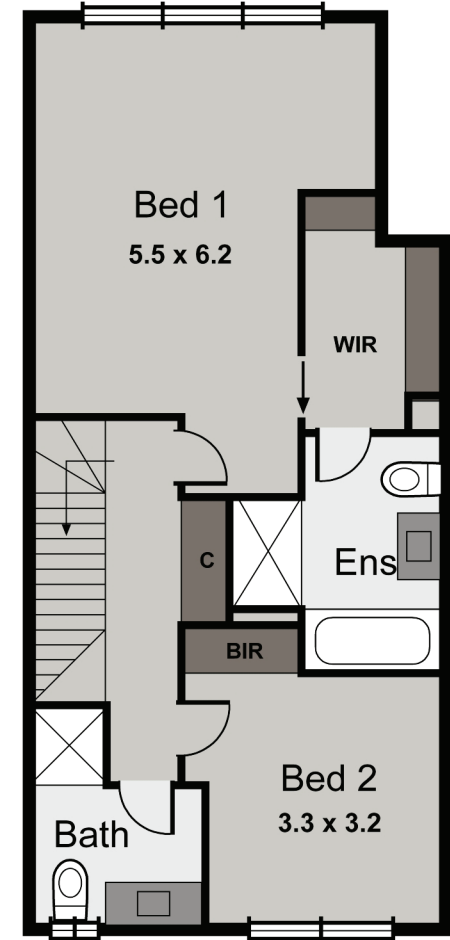
2 2 1

TOTAL AREA 14.45Q / 134m²

LAND SIZE 85.4m²



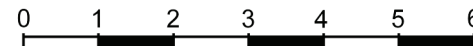
Ground Floor



First Floor

harcon

THIS DRAWING IS FOR ILLUSTRATIVE PURPOSES ONLY AND WHILE EVERY EFFORT HAS BEEN MADE TO MAINTAIN ACCURACY, PROSPECTIVE PURCHASERS SHOULD CHECK ALL INFORMATION



Scale in metres approx.

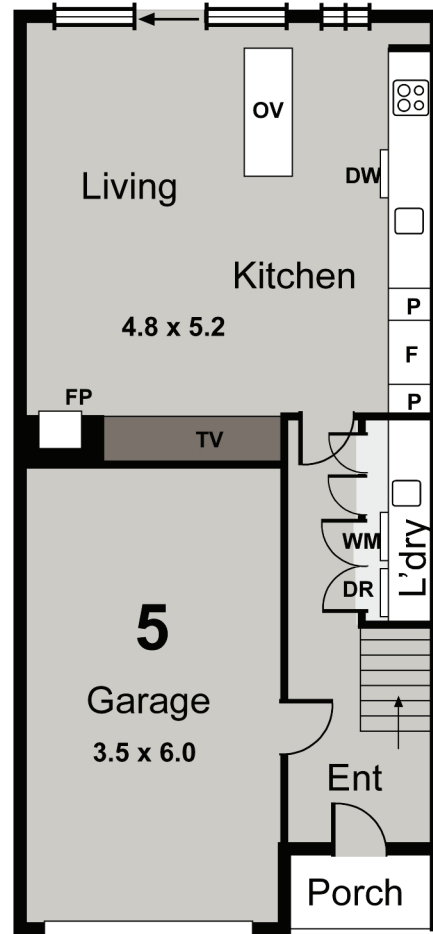
24 CARR STREET,
BRIGHTON EAST VIC 3187

UNIT 5

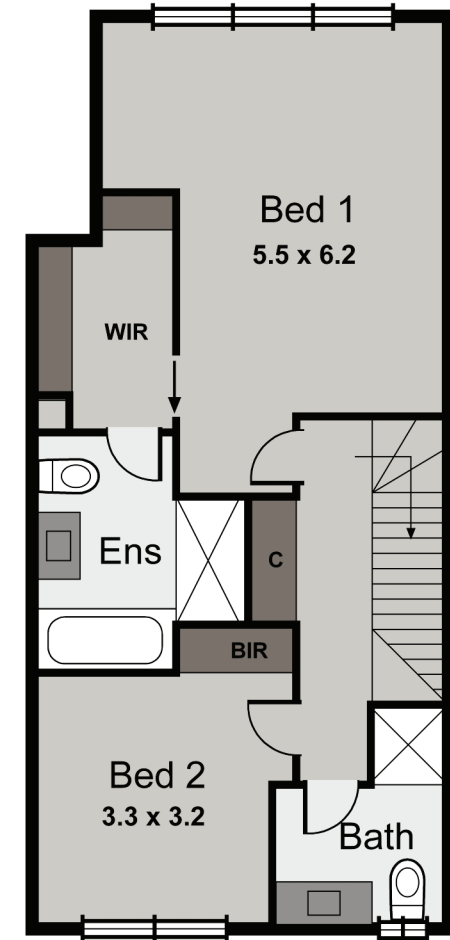
2 2 1

TOTAL AREA 14.2SQ / 132.2m²

LAND SIZE 85.6m²



Ground Floor



First Floor

harcon

THIS DRAWING IS FOR ILLUSTRATIVE PURPOSES ONLY AND WHILE EVERY EFFORT HAS BEEN MADE TO MAINTAIN ACCURACY, PROSPECTIVE PURCHASERS SHOULD CHECK ALL INFORMATION



0 1 2 3 4 5 6

Scale in metres approx.

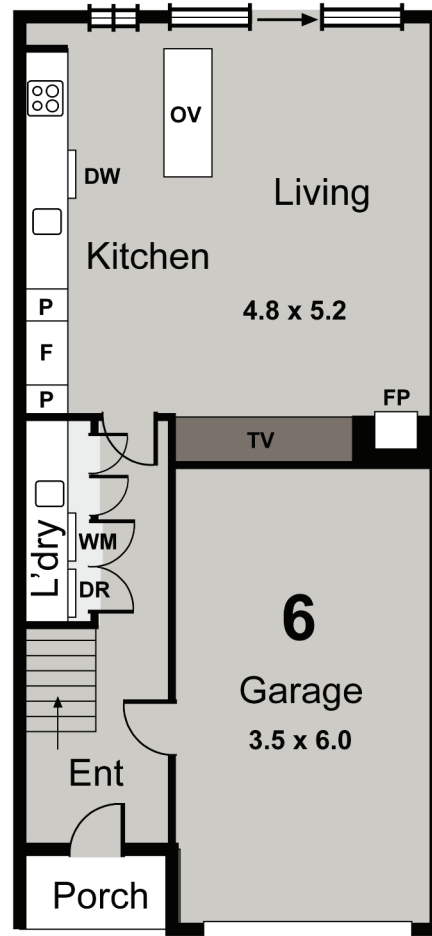
24 CARR STREET,
BRIGHTON EAST VIC 3187

UNIT 6

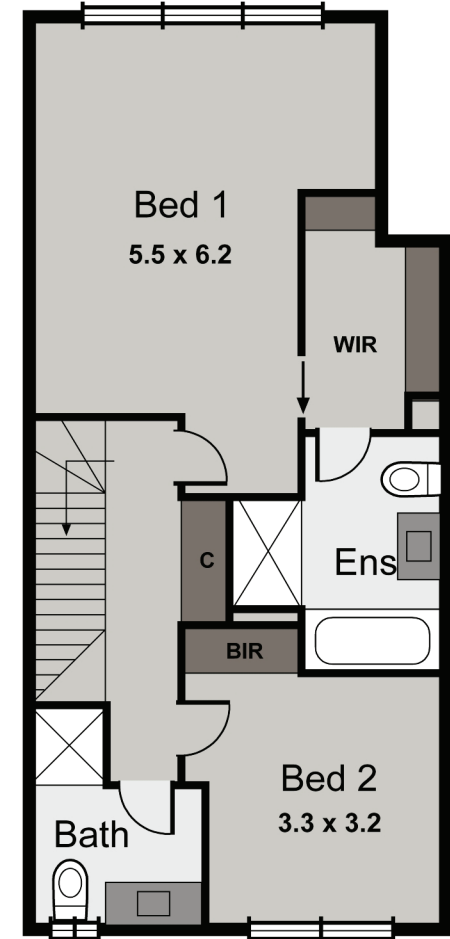
2 2 1

TOTAL AREA 14.3SQ / 132.5m²

LAND SIZE 85.6m²



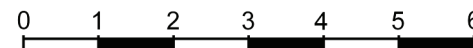
Ground Floor



First Floor

harcon

THIS DRAWING IS FOR ILLUSTRATIVE PURPOSES ONLY AND WHILE EVERY EFFORT HAS BEEN MADE TO MAINTAIN ACCURACY, PROSPECTIVE PURCHASERS SHOULD CHECK ALL INFORMATION



Scale in metres approx.

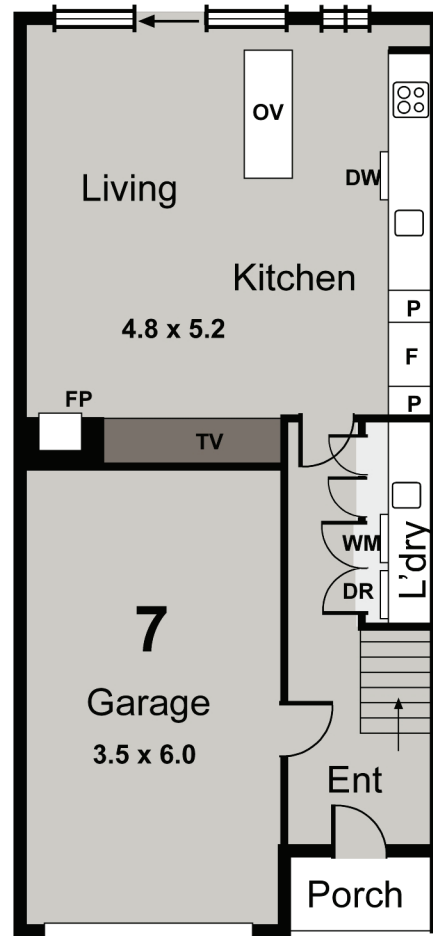
24 CARR STREET,
BRIGHTON EAST VIC 3187

UNIT 7

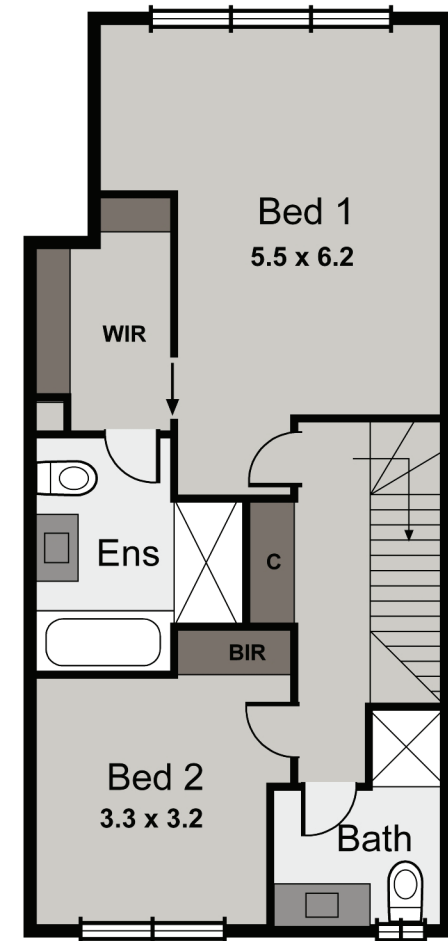
2 2 1

TOTAL AREA 14.45SQ / 133.9m²

LAND SIZE 85.7m²



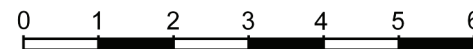
Ground Floor



First Floor

harcon

THIS DRAWING IS FOR ILLUSTRATIVE PURPOSES ONLY AND WHILE EVERY EFFORT HAS BEEN MADE TO MAINTAIN ACCURACY, PROSPECTIVE PURCHASERS SHOULD CHECK ALL INFORMATION



Scale in metres approx.

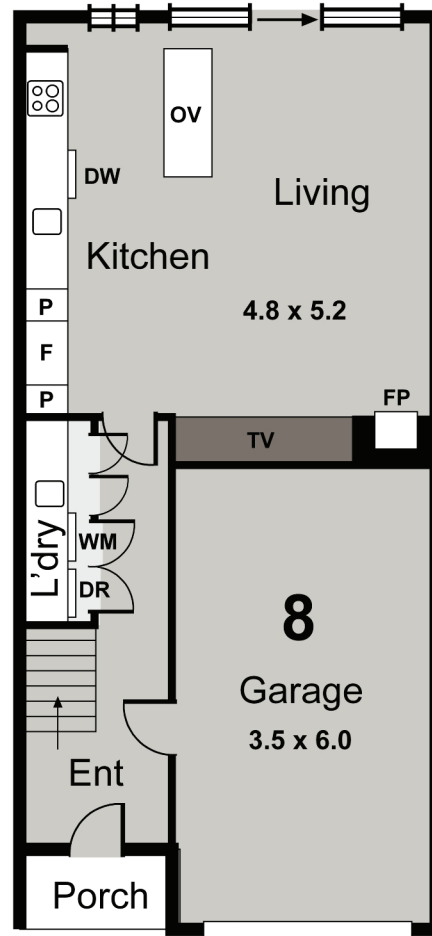
24 CARR STREET,
BRIGHTON EAST VIC 3187

UNIT 8

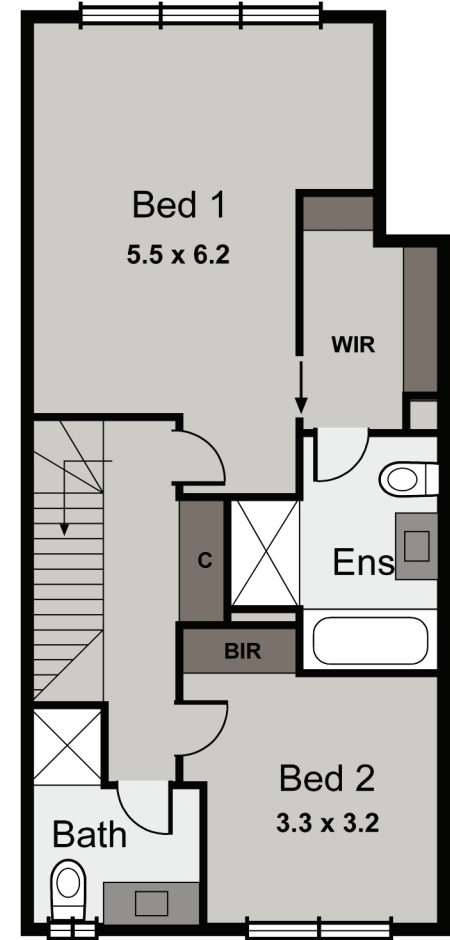
2 2 1

TOTAL AREA 14.6SQ / 136m²

LAND SIZE 87.4m²



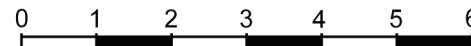
Ground Floor



First Floor

harcon

THIS DRAWING IS FOR ILLUSTRATIVE PURPOSES ONLY AND WHILE EVERY EFFORT HAS BEEN MADE TO MAINTAIN ACCURACY, PROSPECTIVE PURCHASERS SHOULD CHECK ALL INFORMATION



Scale in metres approx.

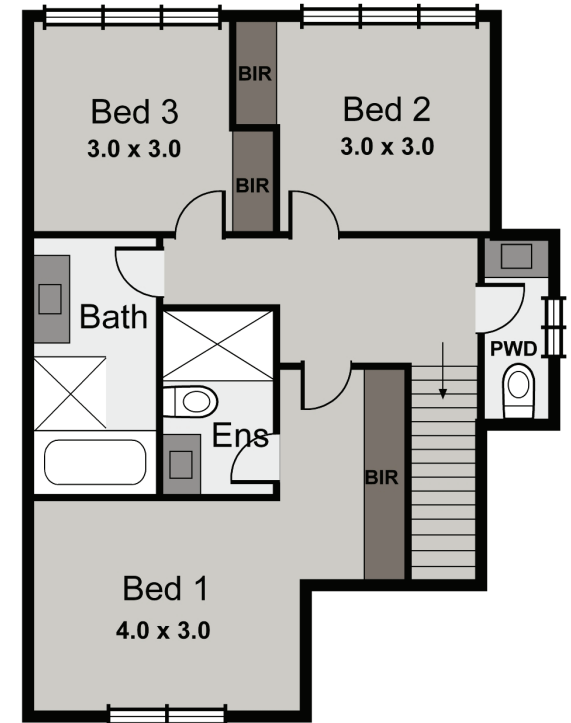
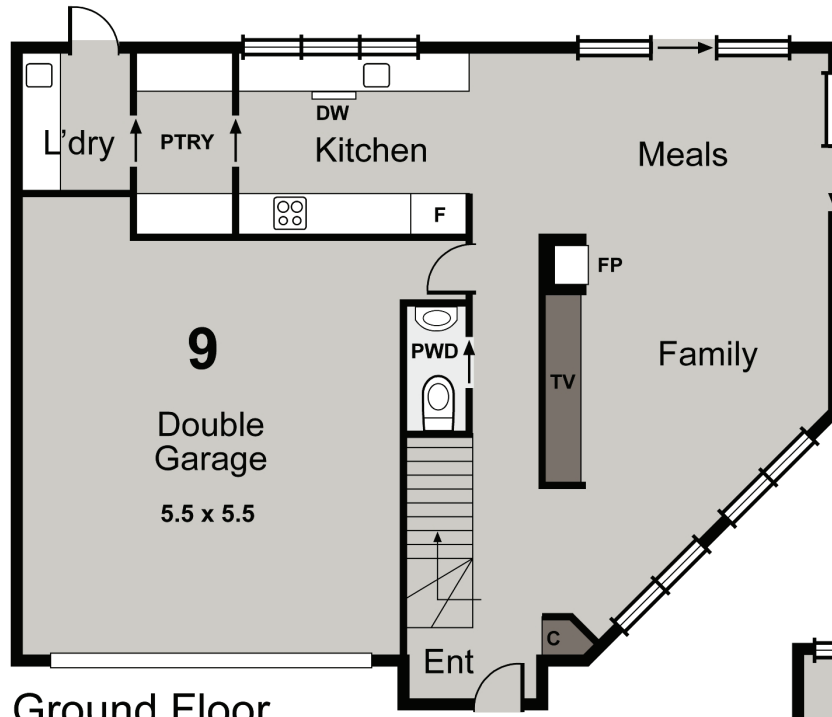
24 CARR STREET,
BRIGHTON EAST VIC 3187

UNIT 9

3  2.5  2 

TOTAL AREA 19.8SQ / 183.6m²

LAND SIZE 278.8m²



harcon

THIS DRAWING IS FOR ILLUSTRATIVE PURPOSES ONLY AND WHILE EVERY EFFORT HAS BEEN MADE TO MAINTAIN ACCURACY, PROSPECTIVE PURCHASERS SHOULD CHECK ALL INFORMATION

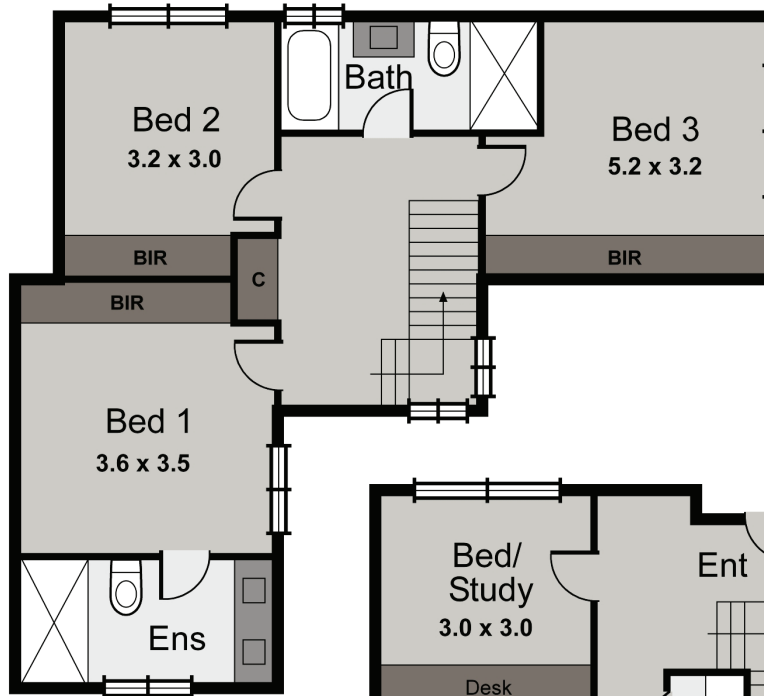
24 CARR STREET,
BRIGHTON EAST VIC 3187

UNIT 10

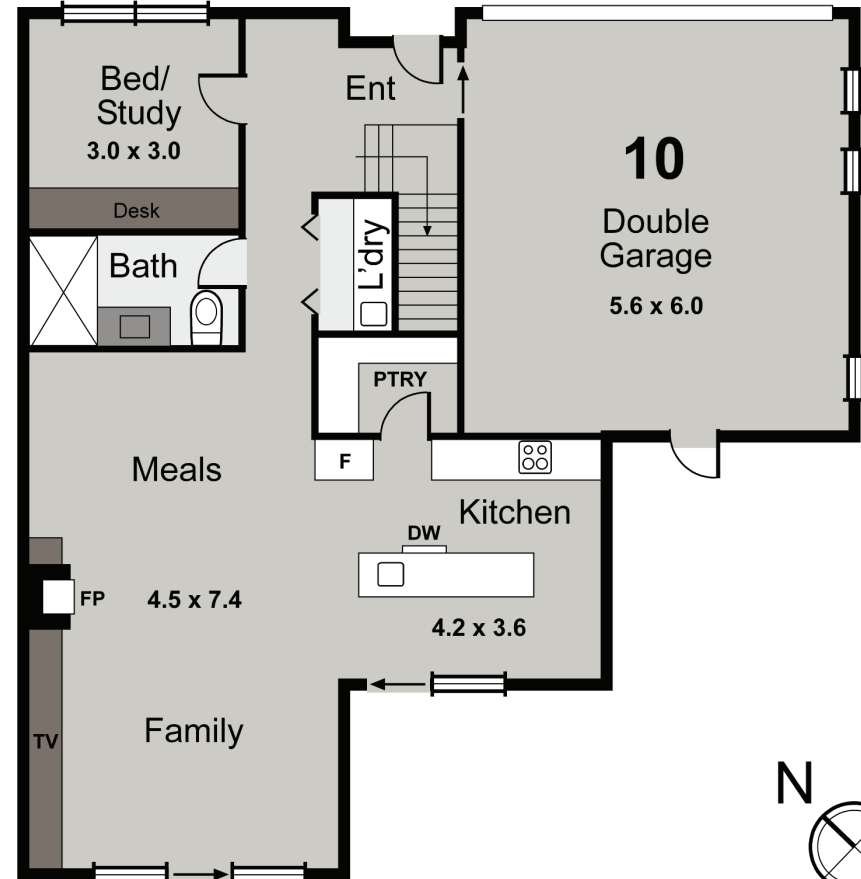
4  3.5  2 

TOTAL AREA 21.6SQ / 200.6m²

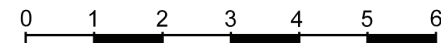
LAND SIZE 223.6m²



First Floor



Ground Floor



Scale in metres approx.

harcon

THIS DRAWING IS FOR ILLUSTRATIVE PURPOSES ONLY AND WHILE EVERY EFFORT HAS BEEN MADE TO MAINTAIN ACCURACY, PROSPECTIVE PURCHASERS SHOULD CHECK ALL INFORMATION

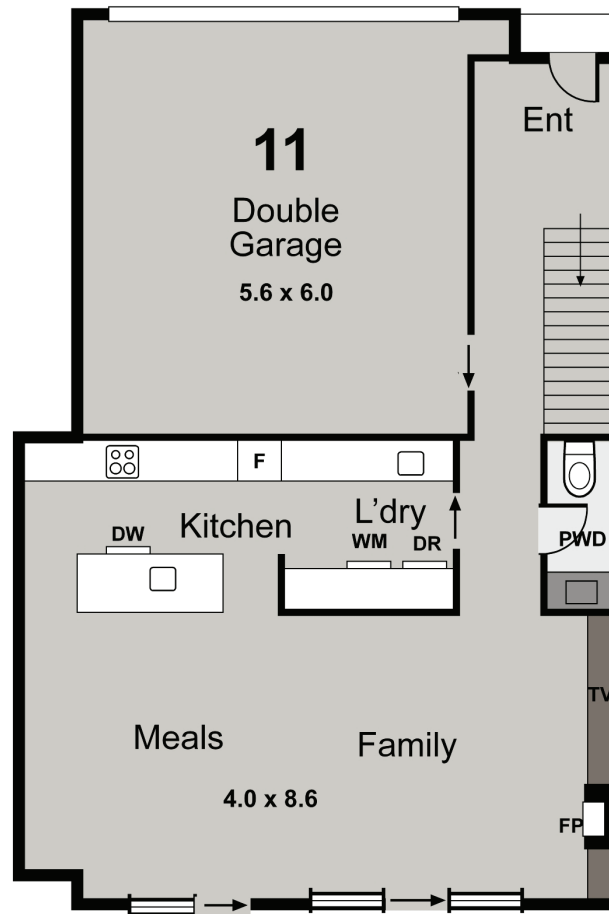
24 CARR STREET,
BRIGHTON EAST VIC 3187

UNIT 11

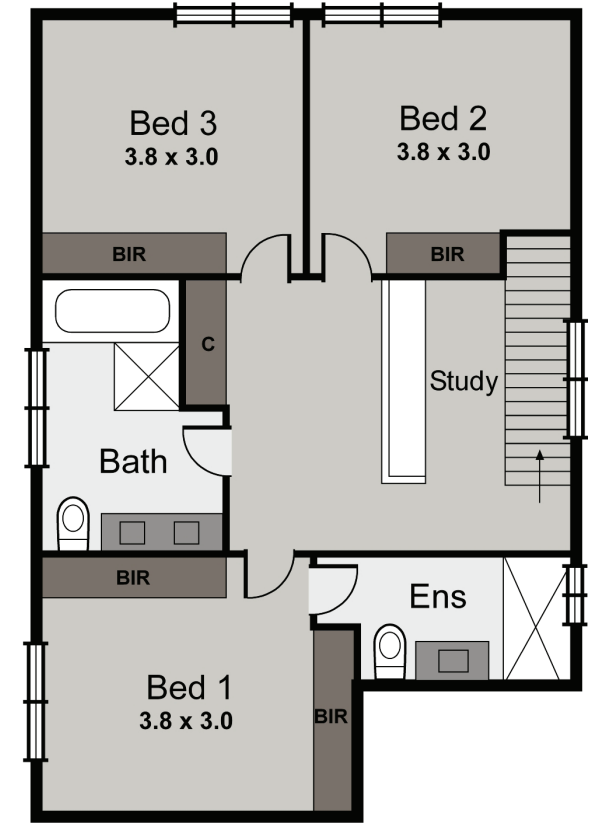
3+1  2.5  2 

TOTAL AREA 21.9SQ / 203.4m²

LAND SIZE 224.7m²



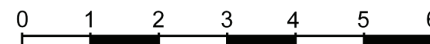
Ground Floor



First Floor

harcon

THIS DRAWING IS FOR ILLUSTRATIVE PURPOSES ONLY AND WHILE EVERY EFFORT HAS BEEN MADE TO MAINTAIN ACCURACY, PROSPECTIVE PURCHASERS SHOULD CHECK ALL INFORMATION



Scale in metres approx.

24 CARR STREET,
BRIGHTON EAST VIC 3187

UNIT 12

3+1  2.5  2 

TOTAL AREA 23.2SQ / 215.1m²

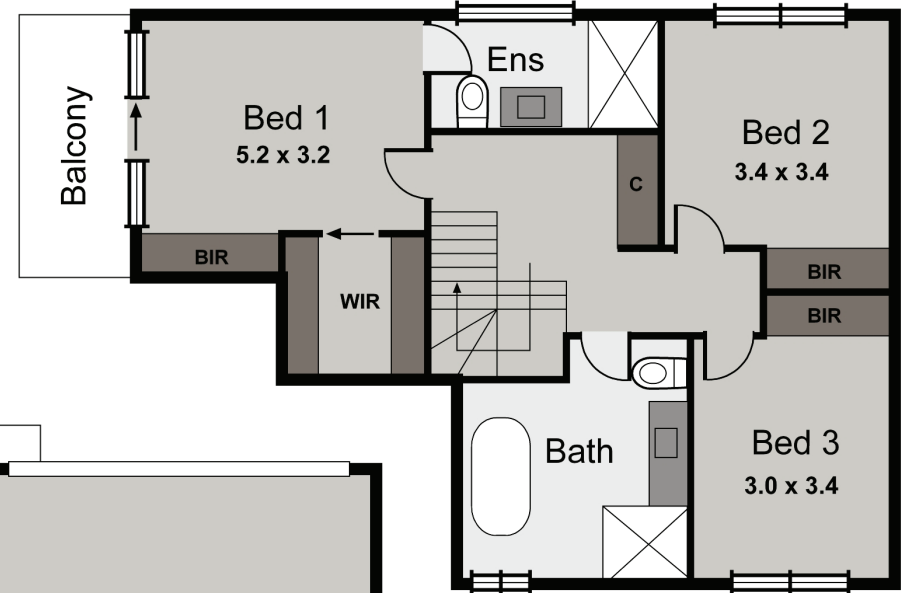
LAND SIZE 215.1m²

harcon

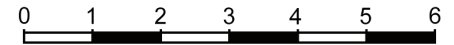
THIS DRAWING IS FOR ILLUSTRATIVE PURPOSES ONLY AND WHILE EVERY EFFORT HAS BEEN MADE TO MAINTAIN ACCURACY, PROSPECTIVE PURCHASERS SHOULD CHECK ALL INFORMATION



Ground Floor



First Floor



Scale in metres approx.